

STATE OF MICHIGAN
DEPARTMENT
OF
NATURAL RESOURCES

LAND CORNER RECORD

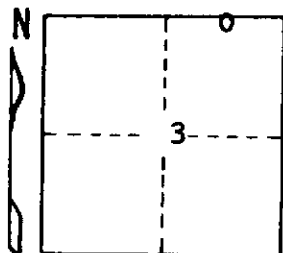
Alger
Delta COUNTY
T 44 43 N R 22W

DESCRIPTION OF CORNER East 1/16 corner $\frac{3}{4}$ T44N R22W
 $\frac{3}{4}$ T43N R22W

CORNER MONUMENT 1" iron pipe with 4" aluminum cap

DATE MONUMENT PLACED AND WITNESSED August 9, 1972 F. J. Bray

WITNESSES TO CORNER..... 4" B. Spruce (E 1/16) (BT) N35°W, 13.7'



3" B. Spruce (X) (BT) S43° E, 6.8'

AND

CIRCLE CORNER REGISTERED

DESCRIPTION IN DETAIL AS TO HOW CORNER WAS LOCATED AND IDENTIFIED OR RESTORED.

This corner is mid point and on a line between section corners $\frac{1}{4}$ mile east and $\frac{1}{4}$ corner $\frac{1}{4}$ mile west.

SURVEYOR'S SEAL

DISTRIBUTION:

Forestry Division, Lansing

SIGNED

Frank J. Bray
REGISTERED LAND SURVEYOR
Frank J. Bray

DATE

11-15-72