

STATE OF MICHIGAN
DEPARTMENT
OF
NATURAL RESOURCES

LAND CORNER RECORD

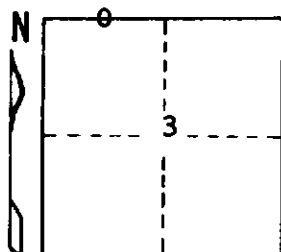
Alger
Delta COUNTY
44
T 43 N R 22W

DESCRIPTION OF CORNER West 1/16 34 T44N R22W
3 T43N R22W

CORNER MONUMENT 1" pipe with 4" aluminum cap

DATE MONUMENT PLACED AND WITNESSED August 9, 1972 F. J. Bray

WITNESSES TO CORNER..... 3" Cedar (W 1/16) (BT) N86°E, 2.8'



8" Cedar (W 1/16) (BT) S13°W, 7.2'

AND

CIRCLE CORNER REGISTERED

DESCRIPTION IN DETAIL AS TO HOW CORNER WAS LOCATED AND IDENTIFIED OR RESTORED.

This corner was set midpoint and on the line between section corner west and
¼ corner east.

SURVEYOR'S SEAL

DISTRIBUTION:

Forestry Division, Lansing

SIGNED

Frank J. Bray
REGISTERED LAND SURVEYOR
Frank J. Bray

DATE

11-15-72