

STATE OF MICHIGAN
DEPARTMENT
OF
NATURAL RESOURCES

LAND CORNER RECORD

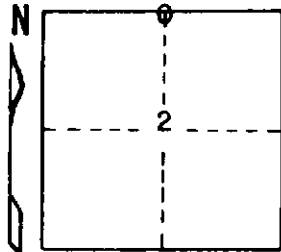
Alger
Delta
44
T 43 N COUNTY R 22 W

DESCRIPTION OF CORNER 1/4 corner for Sections ³⁵T44N-R22W
2 T43N-R22W

CORNER MONUMENT 1" iron pipe with 4" aluminum cap

DATE MONUMENT PLACED AND WITNESSED May 8, 1972

WITNESSES TO CORNER..... 6" R. Maple (1/4S) (NEE) N20°E 5.0'



4" R. Maple (1/4S) (NEE) S30°E 17.5'

AND

CIRCLE CORNER REGISTERED

DESCRIPTION IN DETAIL AS TO HOW CORNER WAS LOCATED AND IDENTIFIED OR RESTORED.

This corner was set mid-point and on line between the section corner 1/2 mile to the west and the section corner 1/2 mile to the east.

SURVEYOR'S SEAL

DISTRIBUTION:

Forestry Division, Lansing

SIGNED

Frank J. Bray
REGISTERED LAND SURVEYOR
Frank J. Bray

DATE

8-11-72