

STATE OF MICHIGAN  
DEPARTMENT  
OF  
NATURAL RESOURCES

LAND CORNER RECORD

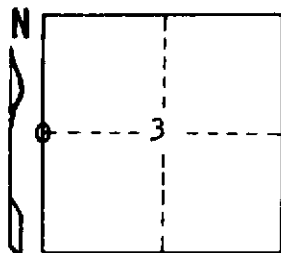
Delta COUNTY  
T 43 N R 22 W

DESCRIPTION OF CORNER 1/4 corner for Sections 4/3

CORNER MONUMENT 1" iron pipe with 4" aluminum cap

DATE MONUMENT PLACED AND WITNESSED July 26, 1972

WITNESSES TO CORNER..... 4" Cedar (1/4S) (NET) S66°W, 7.7'



5" Cedar (1/4S) (NET) S37°E, 10.0'

AND

CIRCLE CORNER REGISTERED

DESCRIPTION IN DETAIL AS TO HOW CORNER WAS LOCATED AND IDENTIFIED OR RESTORED.

This corner was set by proportioned distance between the section corners to the north and to the south.

SURVEYOR'S SEAL

DISTRIBUTION:

Forestry Division, Lansing

SIGNED

Frank J. Bray  
REGISTERED LAND SURVEYOR  
Frank J. Bray

DATE

8-11-72