

STATE OF MICHIGAN
DEPARTMENT
OF
NATURAL RESOURCES

LAND CORNER RECORD

Delta COUNTY

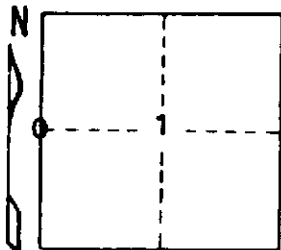
T 43 N R 22 W

DESCRIPTION OF CORNER 1/4 corner for Sections 2/1

CORNER MONUMENT 1" iron pipe with 4" aluminum cap

DATE MONUMENT PLACED AND WITNESSED July 17, 1972 F. J. Bray

WITNESSES TO CORNER..... 9" H. Maple (1/4S) (NET) West, 13.3'



6" H. Maple (1/4S) (NET) S40°E, 13.2'

AND

CIRCLE CORNER REGISTERED

DESCRIPTION IN DETAIL AS TO HOW CORNER WAS LOCATED AND IDENTIFIED OR RESTORED.

This corner was placed on line and the single proportioned distance between the section corners to the north and to the south. Corner checks well with swamp edge to the north. No original evidence found.

SURVEYOR'S SEAL

DISTRIBUTION:

Forestry Division, Lansing

SIGNED

Frank J. Bray
REGISTERED LAND SURVEYOR
Frank J. Bray

DATE

8-11-72