

STATE OF MICHIGAN  
DEPARTMENT  
OF  
NATURAL RESOURCES

LAND CORNER RECORD

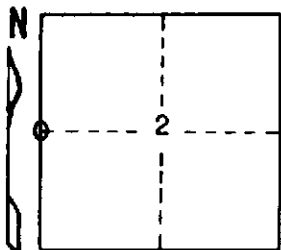
Delta COUNTY  
T 43 N R 22 W

DESCRIPTION OF CORNER 1/4 corner for Sections 3/2

CORNER MONUMENT 1" iron pipe with 4" aluminum cap

DATE MONUMENT PLACED AND WITNESSED July 13, 1972 F. J. Bray

WITNESSES TO CORNER..... 7" H. Maple (1/4S) (NET) N70°E, 7.2'



6" H. Maple (1/4S) (NET) S15°W, 11.8'

AND

CIRCLE CORNER REGISTERED

DESCRIPTION IN DETAIL AS TO HOW CORNER WAS LOCATED AND IDENTIFIED OR RESTORED.

This corner was replaced from a rotted wood post. Position checks well with rotted sugar stump bottom to the southwest and with section corners to the north and to the south.

SURVEYOR'S SEAL

DISTRIBUTION:

Forestry Division, Lansing

SIGNED

Frank J. Bray  
REGISTERED LAND SURVEYOR  
Frank J. Bray

DATE

8-11-72