

STATE OF MICHIGAN
DEPARTMENT
OF
NATURAL RESOURCES

LAND CORNER RECORD

ALGER, DELTA COUNTY

T 44 & 43 N R 22W

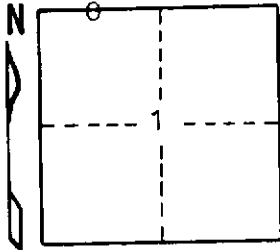
36 T44N-R22W
1 T43N-R22W

DESCRIPTION OF CORNER West 1/16 corner for Sections

CORNER MONUMENT 1" iron pipe with 4" aluminum cap

DATE MONUMENT PLACED AND WITNESSED May 10, 1972

WITNESSES TO CORNER..... 5" H. Maple (W 1/16) (BT) S40°W 18.2'



12" Basswood (W 1/16) (BT) N71°E 40.5'

AND

CIRCLE CORNER REGISTERED

DESCRIPTION IN DETAIL AS TO HOW CORNER WAS LOCATED AND IDENTIFIED OR RESTORED.

This corner was set midpoint and on line between the section corner to the west and the 1/4 corner to the east.

SURVEYOR'S SEAL

SIGNED

Frank J. Bray
REGISTERED LAND SURVEYOR
Frank J. Bray

DATE

6-19-72

DISTRIBUTION:

County Courthouse
Area Forester (Regions I & II)
District or Region Surveyor
Forestry Div., Lansing

R 4047
Rev. 10/68