

STATE OF MICHIGAN
DEPARTMENT
OF
NATURAL RESOURCES

LAND CORNER RECORD

ALGER, DELTA COUNTY

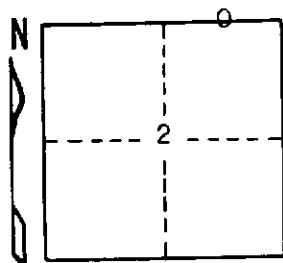
T 44 & 43 N R 22 W

DESCRIPTION OF CORNER East 1/16 corner for Sections ~~238~~ ³⁵⁸ T44N-R22W
T43N-R22W

CORNER MONUMENT 1" iron pipe with 4" aluminum cap

DATE MONUMENT PLACED AND WITNESSED May 8, 1972

WITNESSES TO CORNER..... 7" Cedar (E 1/16) (BT) S22°E 3.5'



10" R. Maple (E 1/16) (BT) N34°E 13.7'

AND

CIRCLE CORNER REGISTERED

DESCRIPTION IN DETAIL AS TO HOW CORNER WAS LOCATED AND IDENTIFIED OR RESTORED.

This corner was set midpoint and on line between the section corner to the east and the 1/4 corner to the west.

SURVEYOR'S SEAL

DISTRIBUTION:

SIGNED

Frank J. Bray
REGISTERED LAND SURVEYOR
Frank J. Bray

DATE

6-19-72

County Courthouse
Area Forester (Regions I & II)
District or Region Surveyor
Forestry Div., Lansing

R 4047
Rev. 10/68