

186

LAND CORNER RECORDATION CERTIFICATE
Filing Requirement of Act 74, Mich. P.A. 1970

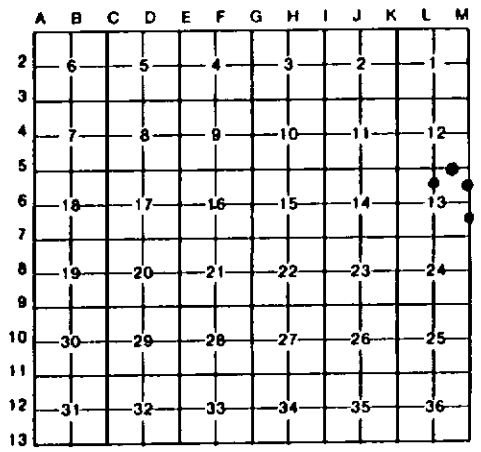
For corners in

Table with columns: Delta (County), Located In, Corner Code //
1. Public Land Survey
2. Property Controlling in Section
3. Miscellaneous Property in Sec.

Register of Deeds Stamp & File Number

4. Lot No. Recorded Plat
5. Private Claims

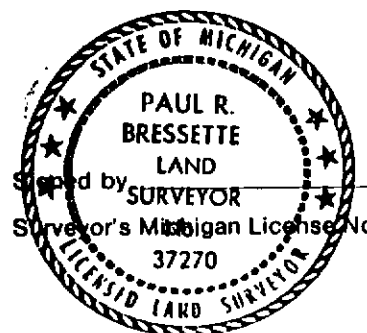
I, Paul R. Bressette, in a field survey on October 19 94, do hereby certify that under requirements of P.A. 74, Michigan P.A. of 1970, the corner points mentioned in lines 1 and 2 above were in conformance with regulations and rules therefore as required in the current manual of survey instructions of the United States Department of the Interior, Bureau of Land Management or by a decree of a Court of Law and/or that the corner points mentioned in lines 3, 4 and 5 above were in conformance with the rules of the Michigan Board of Land Surveyors or by a Decree of a Court of Law; established, re-established, monumented, re-monumented, recovered, found as expressed below:



NOTE: Not more than 4 corners, all in the same town and range, may be recorded on this certificate.

- A. Description of original monument and accessories and/or subsequent restoration:
2. East One-sixteenth Corner common to Sections 12 and 13. Not set in original survey, no evidence of subsequent establishment.
5. North One-sixteenth Corner of Section 13. Not set in original survey, no evidence of subsequent establishment.
7. North One-sixteenth Corner common to Sections 13 and 18. Not set in original survey, no evidence of subsequent establishment.
14. South One-sixteenth Corner common to Sections 13 and 18. Not set in original survey, no evidence of subsequent establishment.
B. Description of corner evidence found and/or method applied in restoring or reestablishing corner:
2. Corner position established mid-point and on-line between the Northeast and North Quarter corners of Section 13.
5. Corner position established mid-point and on-line between the North and Center Quarter corners of Section 13.
7. Corner position established mid-point and on-line between the Northeast and East Quarter corners of Section 13.
14. Corner position established mid-point and on-line between the Southeast and East Quarter corners of Section 13. Variation 20 degrees observed at this corner. Bearings are actual observed readings, uncorrected for variation.

C. Description of monument for corner and accessories established to perpetuate locating the position of the corner:
Table with 4 columns: 2. DNR monument, 5. DNR monument, 7. DNR monument, 14. 1"pipe w/plastic cap
0" Tamarack NO2E 66.2', 8" Balm N81E 35.8', 14" Sugar N25E 30.2', 6" Maple N17W 37.45'
8" Cedar S71E 37.15', 6" Balm S69E 16.8', 9" Sugar S71E 36.5', 6" Maple S76E 10.85'
7" Cedar S02W 50.2', 7" Cedar S44W 35.45', 6" Sugar S50W 13.85', 6" Maple S41W 43.95'
9" Cedar S84W 16.1', 4" Cedar N50W 14.8', 12" Sugar N70W 6.3', 6" Maple N90W 51.2'



Paul R. Bressette Date

Surveyor's Michigan License No. 37270