

MICHIGAN
DEPARTMENT OF CONSERVATION
FORESTRY DIVISION

LAND CORNER RECORD

T. 43 N. R. 23 & 24 W

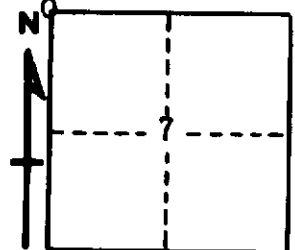
Delta & Marquette COUNTY

DESCRIPTION OF CORNER Section Corner at T43NR24W 1/6 T 43 NR23W

CORNER MONUMENT 1" Iron Pipe with 4" Brass Cap

DATE MONUMENT PLACED AND WITNESSED 9-5-61

WITNESSES TO CORNER..... 6" Cedar (S 6) (NBT) N 53° E 04 1/2 links



5" Cedar (S 1) (NBT) N 31° W 07 links

AND

CIRCLE CORNER REGISTERED

DESCRIPTION IN DETAIL AS TO HOW CORNER WAS LOCATED AND IDENTIFIED OR RESTORED.

This corner was replaced from wood post and 2 old stake points which seem to be in proper location with possible cedar B.T. stumps to NE, SE & SW, also blazed stumps and register tree near.

SURVEYOR'S SEAL

SIGNED Billy D. Bucker DATE April 27, 1964
REGISTERED LAND SURVEYOR
Billy D. Bucker