

JAN 25 2000

Approved By Delta County  
Land Survey Remonumentation  
Peer Group Under Act 345 Of  
P.A. Of 1990 On Dec 28, 1999

*Phyllis A. ...*  
Chairman

SECTION

LAND CORNER RECORDATION CERTIFICATE  
Filing Requirement of Act 74, Mich. P.A. 1970

For corners in

DELTA (County)	Located In:	Corner Code #
1. Public Land Survey	T 43 N R 20 W	I-3 ✓
	T 43 N R 20 W	L-5
	T R	
	T R	
2. Property Controlling in Section	S T R	
	S T R	
3. Miscellaneous Property in Sec.	S T R	
	S T R	

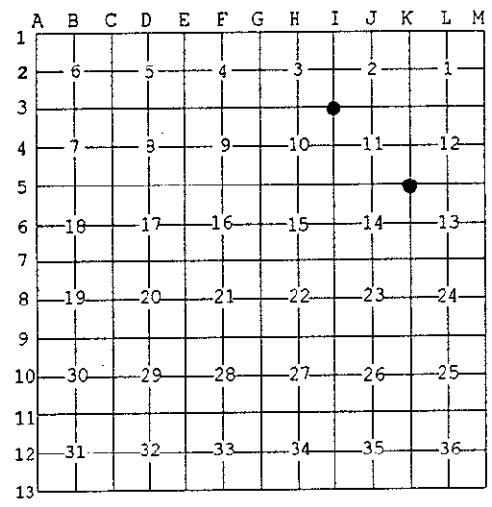
01-04-00  
AT 2:00 O'CLOCK PM  
LIBER 9 PAGE 180  
Register of Deeds Stamp & File Number

I-3 [NW COR SEC 11] L-5 [N1/4 COR SEC 13]

4. Lot No. \_\_\_\_\_, Recorded Plat \_\_\_\_\_  
5. Private Claims \_\_\_\_\_

I, M.P. DAVIS, in a field survey on NOVEMBER, 19 99 do hereby state that under requirements of P.A. 74, Michigan P.A. of 1970, the corner points mentioned in lines 1 and 2 above were in conformance with regulations and rules therefore as required in the current manual of survey instructions of the United States Department of the Interior, Bureau of Land Management or by a decree of a Court of Law and /or that the corner points mentioned in lines 3, 4 and 5 above were in conformance with the rules of the Michigan Board of Land Surveyors or by a Decree of a Court of Law; established, re-established, monumented, recovered, found as expressed below:

NOTE: Not more than 2 corners, all in the same town and range, may be recorded on this certificate.

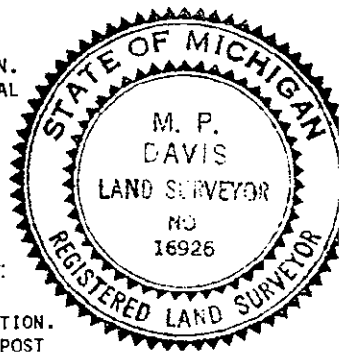


A. Description of original monument and accessories and/or subsequent restoration:

- I-3 INW COR SEC 11] A.MERRYWEATHER,D.S.-1849-WOOD POST (BEECH 18" S30°E 33 LINKS)(HEMLOCK 18" N50°W 47 LINKS) M.DAVIS-1975-L.5 OF LCR'S PG. 4 - FOUND IN PLACE A 1" IRON PIN AND WOOD POST-ID CORNER MONUMENT FROM BAY DE NOC LUMBER COMPANY'S UNRECORDED PLAT OF POLE LAKE. [HEMLOCK 6" N7°E 22.1'] [MAPLE 4" S49°E 4.0'] [MAPLE 5" S20°E 14.8']
- L-5 [N1/4 COR SEC 13] A.MERRYWEATHER,D.S.-1849-WOOD POST (TAMARACK 06" N30°W 29 LINKS)(SPRUCE 05" S18°E 48 LINKS) ROBERT E. SCHMELING-ESCANABA PAPER CO.-1956-L.3 OF LCR'S PG. 47-ID CORNER POST FROM "GLO" NW BT-SET A 1-1/2" I.P. W/A 3" BRASS CAP STAMPED TO ID THE CORNER POSITION. (BLACK SPRUCE 5" S10°E 53 LINKS)(W.PINE 11" N18°E 201.5 LINKS)

B. Description of corner evidence found and/or method applied in restoring or reestablishing corner:

- I-3 INW COR SEC 11 FOUND IN PLACE A 1" IRON PIN - ID CORNER MONUMENT FROM PREVIOUS VISIT TO THE AREA AND FROM THE SE AND NE BT'S RECORDED PREVIOUSLY WHICH ARE STILL GREEN. ACCEPTED EXISTING MONUMENT AS BEING THE BEST AVAILABLE EVIDENCE AS TO THE LOCATION OF THE POSITION OF THE ORIGINAL CORNER.
- L-5 [N1/4 COR SEC 13] FOUND IN PLACE A 1-1/2" I.P. W/A 3" BRASS CAP STAMPED TO ID THE CORNER POSITION. ID EXISTING MONUMENT AS THAT SET BY SCHMELING IN 1956 FROM HIS NE AND SE BT'S, BOTH NOW IN POOR CONDITION. ACCEPTED EXISTING MONUMENT AS BEING A CAREFUL AND FAITHFUL PERPETUATION OF THE POSITION OF THE ORIGINAL CORNER.



C. Description of monument for corner and accessories established to perpetuate locating the position of the corner:

- I-3 SET OVER EXISTING MONUMENT A BERNTSEN A1NB30 ALUM MONUMENT WITH THE CAP STAMPED TO ID THE CORNER POSITION.  

MAPLE 14"	HEMLOCK 08"(OLD BT)	MAPLE 07"(OLD BT)	MAPLE 11"	SURVEY MONUMENT SIGN POST
N78°W	N07°E	S49°E	S22°W	EAST
37.75'	22.19'	4.05'	14.74'	1.45'(TO FACE)
- L-5 DID NOT DISTURB EXISTING MONUMENT  

W.PINE 14"(OLD BT)	SPRUCE 04"	SPRUCE 06"(OLD BT)	SPRUCE 04"	SURVEY MONUMENT SIGN POST
N24°E	N67°E	S06°E	S48°W	NORTH
133.00'	38.40'	35.00'	42.08'	1.75'(TO FACE)

NOTE: BEARINGS TO REFERENCE OBJECTS ARE MAGNETIC-DISTANCES ARE TO A NAIL W/A DELTA COUNTY REFERENCE TAG, UNLESS OTHERWISE NOTED.

Signed by M.P. DAVIS Date 12/20/99  
Surveyor's Michigan License No. 16926