

Shelley Schmalberg
 Attorney Chairman

JAN 25 2000

SECTION

LAND CORNER RECORDATION CERTIFICATE
 Filing Requirement of Act 74, Mich. P.A. 1970

For corners in

DELTA (County)	Located in:	Corner Code #
1. Public Land Survey	T 43 NR 20 W	J-02
	T 43 NR 20 W	J-03 ✓
	T R	
	T R	
	T R	
2. Property Controlling in Section	S T R	
	S T R	
3. Miscellaneous Property in Sec.	S T R	
	S T R	

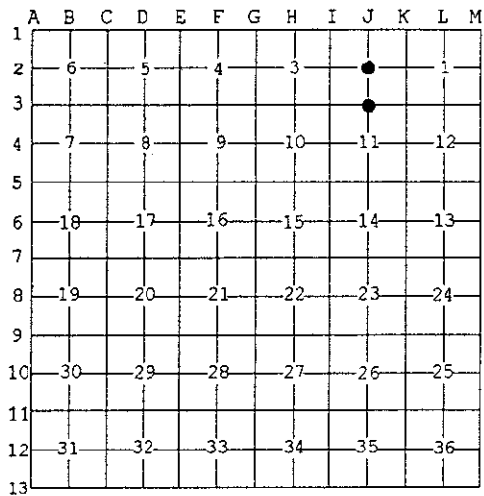
01-04-00
 2:00 O'Clock PM
 PAGE 9 PAGE 178
 Register of Deeds Stamp & File Number

J-02 [C1/4 COR SEC 2] J-03 [N/4 COR SEC 11]

4. Lot No. _____, Recorded Plat _____
 5. Private Claims _____

I, M.P. DAVIS, in a field survey on DECEMBER, 19 99 do hereby state that under requirements of P.A. 74, Michigan P.A. of 1970, the corner points mentioned in lines 1 and 2 above were in conformance with regulations and rules therefore as required in the current manual of survey instructions of the United States Department of the Interior, Bureau of Land Management or by a decree of a Court of Law and /or that the corner points mentioned in lines 3, 4 and 5 above were in conformance with the rules of the Michigan Board of Land Surveyors or by a Decree of a Court of Law, established, re-established, monumented, recovered, found as expressed below:

NOTE: Not more than 2 corners, all in the same town and range, may be recorded on this certificate.



A. Description of original monument and accessories and/or subsequent restoration:

- J-02 [C1/4 COR SEC 2] NOT SET IN THE ORIGINALS
 NO RECORD EVIDENCE OF THIS CORNER HAVING BEEN ESTABLISHED PREVIOUSLY.
- J-03 [N1/4 COR SEC 11] A.MERRYWEATHER,D.S.-1848-WOOD POST (HEMLOCK 18" S50°W 11 LINKS)(FIR 06" N20°E 16 LINKS)
 NO RECORD EVIDENCE OF CORNER RECOVERY AND/OR SUBSEQUENT MONUMENTATION.

B. Description of corner evidence found and/or method applied in restoring or reestablishing corner:

- J-02 [C1/4 COR SEC 2] ESTABLISHED CORNER POSITION AT THE JUNCTION OF THE N-S AND E-W 1/4 LINES.
- J-03 [N1/4 COR SEC 11] NO CORNER EVIDENCE FOUND. REESTABLISHED CORNER POSITION ON LINE WITH AND AT THE PROPORTIONATE DISTANCE BETWEEN THE MEANDER CORNER ON THE WEST SHORE OF POLE LAKE AND THE NE CORNER OF SEC 11 TO THE EAST.



C. Description of monument for corner and accessories established to perpetuate locating the position of the corner:

- J-02 SET A BERNTSEN A1NB30 ALUM MONUMENT WITH THE CAP STAMPED TO ID THE CORNER POSITION.
 W. PINE 06" N74°W 28.19' W.PINE 12" N31°E 10.50' MAPLE 08" S17°E 21.30' HEMLOCK 08" S50°W 20.23' SURVEY MONUMENT SIGN POST EAST 1.54' (TO FACE)
- J-03 SET A 5/8" X 18" REBAR W/A 3-1/4" ALUM CAP STAMPED TO ID THE CORNER POSITION. NOTE: CORNER IS BURIED IN THE FRONT YARD OF THE JAMES HILL RESIDENT.
 MAPLE 08" N41°W 71.30' W.PINE 09" S30°W 28.00' NW CORNER OF HOUSE N52°E 63.54' SW CORNER OF HOUSE EAST 58.77'

NOTE: BEARINGS TO REFERENCE OBJECTS ARE MAGNETIC-DISTANCES ARE TO A NAIL W/A DELTA COUNTY REFERENCE TAG, UNLESS OTHERWISE NOTED.

Signed by M.P. Davis Date 12/20/99
 Surveyor's Michigan License No. 16926