

RECORDED

LAND CORNER RECORDATION CERTIFICATE
Filing Requirement of Act 74, Mich. P.A. 1970

1997 OCT -9 AM 8:20

For corners in Dickinson (County) Waucesdah Twp.

Located In:

Corner Code #

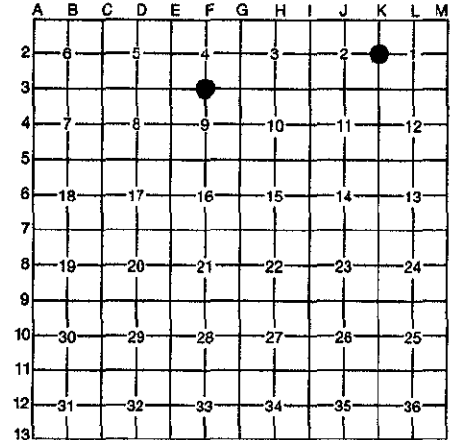
Table with 3 columns: Item description, Township/Range/Section, and Corner Code. Includes items like 'Public Land Survey' and 'Property Controlling in Section'.

REGISTER OF DEEDS
DICKINSON COUNTY
RON MOBLEY, CLERK

Register of Deeds Stamp & File Number

4. Lot No. , Recorded Plat
5. Private Claims

I, Robert F. Perkins, in a field survey on June 26, 1997, do hereby certify that under requirements of P.A. 74, Michigan P.A. of 1970, the corner points mentioned in lines 1 and 2 above were in conformance with regulations and rules therefore as required in the current manual of survey instructions of the United States Department of the Interior, Bureau of Land Management or by a decree of a Court of Law and/or that the corner points mentioned in lines 3, 4 and 5 above were in conformance with the rules of the Michigan Board of Professional Surveyors or by a Decree of a Court of Law; established, re-established, monumented, re-monumented, recovered, found as expressed below:



NOTE: Not more than 4 corners, all in the same town and range, may be recorded on this certificate.

A. Description of original monument and accessories and/or subsequent restoration:

F-3 South 1/4 Corner, Section 4
Post by James Mullett, D.S. 1849
Original Bearing Trees
Cedar 8" N38°W 03 Lks.
B.Ash 6" S59°W 11 Lks.

K-2 East 1/4 Corner, Section 2
Post by James Mullett, D.S. 1849
Original Bearing Trees
Fir 10" N33°E 22 Lks.
Cedar 12" S89°E 10 Lks.

B. Description of corner evidence found and/or method applied in restoring or reestablishing corner:

F-3 No evidence of Original Corner or Accessories Found.
Found 2 1/2" Sq. Cedar Post with remains of very old fences South and East from Post.
Post agrees with Survey by H.F. Mills, E.M. made in 1922.
Map on File at W.E.P.Co. Iron Mtn. Office

K-2 Found K.C. Corp. B.C. Pipe Marker as Set by E. Kazianka, P.S. #14765 in 1966.
For Details refer to old Certificate #1041 on file at Dickinson County Register of Deeds Office.

ACCEPTED BY THE DICKINSON COUNTY SURVEY PEER GROUP AS THE OFFICIAL CORNER UNDER MICHIGAN PUBLIC ACT 345 OF 1990 AT A MEETING HELD ON 10-7-97

R.F.P.

COUNTY REPRESENTATIVE

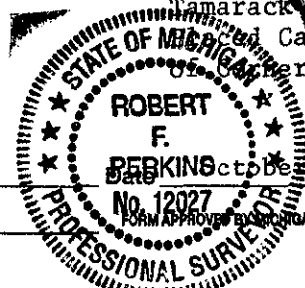
C. Description of monument for corner and accessories established to perpetuate locating the position of the corner:

F-3 Accepted above Post as Best Available Evidence of Corner Location. Set 2 1/2" D.C. Remon. Corner at Post.
New Witnesses
Spruce 12" N08°E (M.B.) 38.70'
Db1. Cedar 12" N63°E (M.B.) 10.00'
Cedar 10" S67°E (M.B.) 17.00'
Fir 3" S35°W (M.B.) 20.30'
Placed Carsonite Marker 1.0' North.

K-2 Upgraded above Pipe Monument as follows:
New Witnesses
Db1. Fir 10" N03°E (M.B.) 24.38'
Tamarack 8" N55°W (M.B.) 14.33' (Ex.
Tamarack 8" N80°W (M.B.) 9.6' (Ex.
Tamarack 10" S68°E (M.B.) 17.44' (Ex.
Placed Carsonite Marker 1.5' North

Signed by Robert F. Perkins

Surveyor's Michigan License No. 12027



October 1, 1997

FORM APPROVED BY MICHIGAN STATE BOARD OF PROFESSIONAL SURVEYORS, JAN. 28, 1971
REVISED MAY 14, 1978
REVISED JAN., 1993