

LAND CORNER RECORDATION CERTIFICATE
Filing Requirement of Act 74, Mich. P.A. 1970

RECORDED

1997 OCT -9 AM 8:20

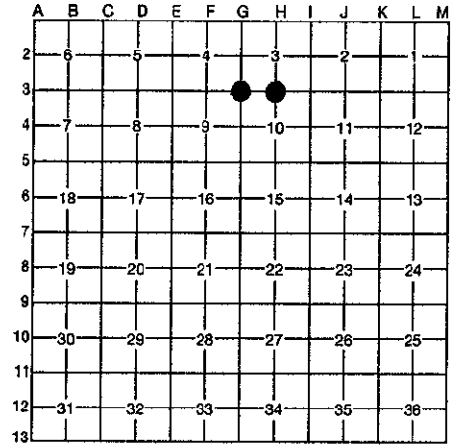
For corners in Dickinson Located In: _____ Corner Code # _____
 (County)
 Waucedah Twp.

1. Public Land Survey	T	<u>39N</u>	R	<u>28W</u>	<u>G-3</u>
	T	_____	R	_____	<u>H-3</u>
	T	_____	R	_____	_____
	T	_____	R	_____	_____
2. Property Controlling in Section	S	_____	T	_____	_____
	S	_____	T	_____	_____
3. Miscellaneous Property in Section	S	_____	T	_____	_____
	S	_____	T	_____	_____

4. Lot No. _____, Recorded Plat _____
 5. Private Claims _____

REGISTER OF DEEDS
 DICKINSON COUNTY
 RON MOORE, CLERK

Register of Deeds Stamp & File Number



I, Robert F. Perkin in a field survey on June 26, 1997, do hereby certify that under requirements of P.A. 74, Michigan P.A. of 1970, the corner points mentioned in lines 1 and 2 above were in conformance with regulations and rules therefore as required in the current manual of survey instructions of the United States Department of the Interior, Bureau of Land Management or by a decree of a Court of Law and/or that the corner points mentioned in lines 3, 4 and 5 above were in conformance with the rules of the Michigan Board of Professional Surveyors or by a Decree of a Court of Law; established, re-established, monumented, re-monumented, recovered, found as expressed below:

NOTE: Not more than 4 corners, all in the same town and range, may be recorded on this certificate.

A. Description of original monument and accessories and/or subsequent restoration:

G-3 Section Corner common to Sections 3-4-9-10.
 Post by James Mullett, D.S. 1849
 Original Bearing Trees
 Hemlock 18" N45°W 50 Lks.
 Hemlock 10" S50°W 25 Lks.

H-3 South ½ Corner, Section 3
 Post by James Mullett, D.S. 1849
 Original Bearing Trees
 Sugar 10" N1°E 19 Lks.
 W.Pine 18" S13°E 13 Lks.

B. Description of corner evidence found and/or method applied in restoring or reestablishing corner:

G-3 No evidence of Original Corner or Accessories Found.
 Recovered Point of Corner Post of very old Fences running South and West. Location agrees with H.F. Mills, E.M., 1922 Survey on File at W.E.P.Co. Iron Mtn. Office.
 i.e 2632.5' West to ¼ Corner (Mills 1922) / 2633.16' Present.

H-3 No evidence of Original Corner or Accessories Found.
 Corner Re-established by Single Proportionate Measure on line between Section Corners one-half mile East and one-half mile West.

ACCEPTED BY THE DICKINSON COUNTY SURVEY PEER GROUP AS THE OFFICIAL CORNER UNDER MICHIGAN PUBLIC ACT 345 OF 1990 AT A MEETING HELD ON 10-7-97
ROBERT PERKINS
 COUNTY REPRESENTATIVE

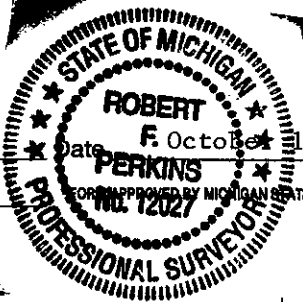
C. Description of monument for corner and accessories established to perpetuate locating the position of the corner:

G-3 Accepted above Fence intersection as Best Available Evidence of Corner Location.
 Set 3½" Stamped D.C. Remon.Monument at Fence Corner.
 New Witnesses
 Cedar 6" N55°E (M.B.) 40.20'
 Cedar 12" S25°E (M.B.) 10.25'
 Fir 4" N25°W (M.B.) 10.40'
 Ash 7" N80°W (M.B.) 14.85'
 Placed Carsonite Marker 1.0' North.

H-3 Set 2½" Stamped D.C. Remon. Corner. New Witnesses
 Fir 3" N74°W (M.B.) 15.60'
 Spruce 5" N20°E (M.B.) 13.96'
 Fir 6" N79°E (M.B.) 10.95'
 Fir 5" S15°W (M.B.) 40.70'
 Placed Carsonite Marker 1.0' South

Signed by Robert F. Perkins

Surveyor's Michigan License No. 12027



Date F. October 1, 1997

MICHIGAN STATE BOARD OF PROFESSIONAL SURVEYORS, JAN. 28, 1971
 REVISED MAY 14, 1975
 REVISED JAN., 1983