

DEC 18 1995

COMMISSION

RECORDED

1995 NOV 21 AM 11:26

LAND CORNER RECORDATION CERTIFICATE
Filing Requirement of Act 74, Mich. P.A. 1970

For corners in Dickinson (County)

Located In:

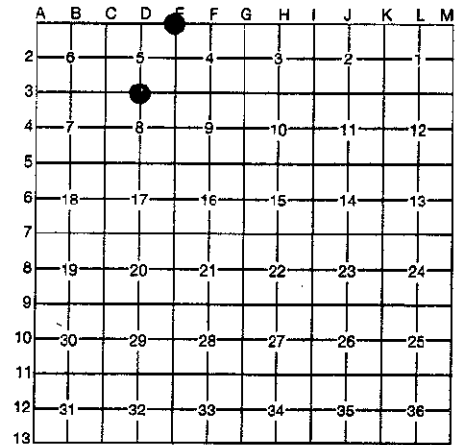
Corner Code #

- 1. Public Land Survey T 39N R 29W D-3 E-1
2. Property Controlling in Section S T R
3. Miscellaneous Property in Section S T R

REGISTER OF DEEDS
DICKINSON COUNTY

Register of Deeds Stamp & File Number

- 4. Lot No. , Recorded Plat
5. Private Claims



I, Robert F. Perkins, in a field survey on Oct. 9, 1995, do hereby certify that under requirements of P.A. 74, Michigan P.A. of 1970, the corner points mentioned in lines 1 and 2 above were in conformance with regulations and rules therefore as required in the current manual of survey instructions of the United States Department of the Interior, Bureau of Land Management or by a decree of a Court of Law and/or that the corner points mentioned in lines 3, 4 and 5 above were in conformance with the rules of the Michigan Board of Professional Surveyors or by a Decree of a Court of Law; established, re-established, monumented, re-monumented, recovered, found as expressed below:

NOTE: Not more than 4 corners, all in the same town and range, may be recorded on this certificate.

A. Description of original monument and accessories and/or subsequent restoration:

- D-3 South 1/4 Corner, Section 5 Post J. Mullett, D.S. 1849 Original Bearing Trees W.Pine 8" N28°E 6 Lks. W.Pine 4" S 8°W 6 Lks.
E-1 Northeast Corner, Section 5 Post J. Mullett, D.S. 1848 Original Bearing Trees Hemlock 12" N43°E 11 Lks. Hemlock 12" N68°W 21 Lks.

ACCEPTED BY THE DICKINSON COUNTY SURVEY PEER GROUP AS THE OFFICIAL CORNER UNDER MICHIGAN PUBLIC ACT 345 OF 1990 AT A MEETING HELD ON 11-20-95

R.F.P.

B. Description of corner evidence found and/or method applied in restoring or reestablishing corner: COUNTY REPRESENTATIVE

- D-3 No Evidence of Original Corner or Accessories remains. Found Concrete Monument-Sheet 7-H of City of Norway Record. Corner located in Built-Up Urban Area. Researched in 1994.
E-1 No Evidence of Original Corner or Accessories remains. Found Concrete Monument buried in E N-S Road. Old Fence Line runs West. Corner is 5304' East of N.W. Corner-Section 5. Corner Researched in 1994.

C. Description of monument for corner and accessories established to perpetuate locating the position of the corner:

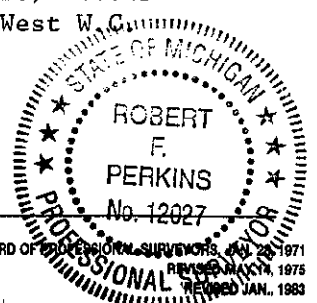
- D-3 New Witnesses to Existing Concrete Monument. W.Pine 14" N43°E (M.B.) 12.18' Spruce 12" S60°E (M.B.) 15.11' N.E. Corner Foundation of White Barn, S70°W (M.B.) 4.71'. X Cut on N.E. Corner Garage Foundation, S20°W (M.B.) 19.96'. B.T.'s have Duplex Nail & Washer
E-1 Placed Monument Box over existing Monument. Set Stamped 3" D.C. Remon. Monument W.C., N86°W (M.B.) 17.45. P.Pole N18°E (M.B.) 115.50' P.Pole South (M.B.) 133.50' Red Pine 4" N11°W (M.B.) 66.45' Carsonite Marker 0.5' West W.C.

Signed by Robert F. Perkins

Date Nov. 7, 1995

Surveyor's Michigan License No. 12027

FORM APPROVED BY MICHIGAN STATE BOARD OF PROFESSIONAL SURVEYORS, JULY 28, 1971 REVISED MAY 24, 1975 REVISED JAN., 1983



178