

SURVEY &  
MONUMENTATION

DEC 18 1995

COMMISSION

LAND CORNER RECORDATION CERTIFICATE  
Filing Requirement of Act 74, Mich. P.A. 1970

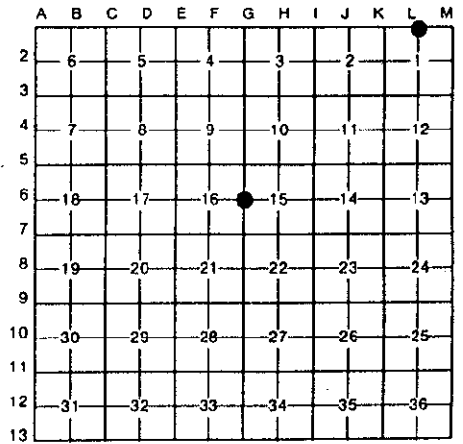
RECORDED  
1995 NOV 22 PM 2:31

For corners in

<u>Dickinson</u> (County)	Located In:	Corner Code #/
1. Public Land Survey	T <u>39N</u> R <u>29W</u>	L-1
L-1 36 G-6 16 15	T <u>39N</u> R <u>29W</u>	G-6
1	T _____ R _____	
	T _____ R _____	
2. Property Controlling in Section	S _____ T _____ R _____	
	S _____ T _____ R _____	
3. Miscellaneous Property in Sec.	S _____ T _____ R _____	
	S _____ T _____ R _____	

Register of Deeds Stamp & File Number

4. Lot No. \_\_\_\_\_, Recorded Plat \_\_\_\_\_  
5. Private Claims \_\_\_\_\_



I, James H. Moore, in a field survey on September 6, 19 95, do hereby certify that under requirements of P.A. 74, Michigan P.A. of 1970, the corner points mentioned in lines 1 and 2 above were in conformance with regulations and rules therefore as required in the current manual of survey instructions of the United States Department of the Interior, Bureau of Land Management or by a decree of a Court of Law and/or that the corner points mentioned in lines 3, 4 and 5 above were in conformance with the rules of the Michigan Board of Land Surveyors or by a Decree of a Court of Law; established, re-established, monumented, re-monumented, recovered, found as expressed below:

**NOTE: Not more than 4 corners, all in the same town and range, may be recorded on this certificate.**

A. Description of original monument and accessories and/or subsequent restoration:

L-1 Original Corner - Post Set by H. Brevoort	G-6 Original Corner - Post Set by J. H. Mullet October 1849
Original Bearing Trees	Original Bearing Trees
12" Hemlock N28°E 7 Links	8" Birch S47°W 11 Links
12" Hemlock N18°W 25 Links	6" Maple S55°E 25 Links

B. Description of corner evidence found and/or method applied in restoring or reestablishing corner:

L-1 Sundberg, Carlson Found 1 1/4" Drill Steel, Suggested Accepting 1 1/4" Drill Steel as Found	G-6 Found 1/2" Iron Pin Set by U.P. Engineering 1994 as Per Sundberg, Carlson's Notes
21' West of Road Centerline and on Road Extended From East	Located 5' South of Centerline of Road to East and on Centerline of North-South Road
Record Research On File With Register of Deeds	Record Research On File With Register of Deeds

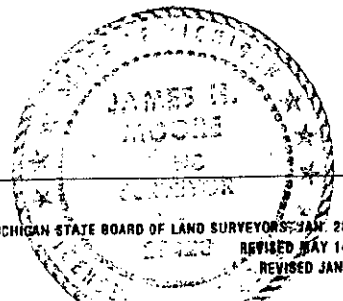
ACCEPTED BY THE DICKINSON COUNTY SURVEY PEER GROUP AS THE OFFICIAL CORNER UNDER MICHIGAN PUBLIC ACT 345 OF 1990 AT A MEETING HELD ON 11-20-95  
R.O.P.  
COUNTY REPRESENTATIVE

C. Description of monument for corner and accessories established to perpetuate locating the position of the corner:

L-1 Set New Dickinson County Capped Aluminum Monument Next to Existing Pin. Monument Stamped to Identify Corner. Referenced as Follows:	G-6 Set New Dickinson County Capped Aluminum Monument in New Monument Box. Monument Stamped to Identify Corner. Referenced as Follows:
Tel Ped N70°E 70.82'	Power Pole N33°E 70.89'
Power Pole S60°E 65.03'	Power Pole S22°E 40.11'
4" Cedar S32°W 58.50'	10" Tamarack S84°W 25.24'
12" Cedar West 30.59'	Carsonite Rail - Reference Monument N81°W 32.59'
Carsonite Rail West 1.0'	

Signed by James H. Moore  
Surveyor's Michigan License No. 28423

Date 11/20/95



195