

DEC 18 1995

COMMISSION

LAND CORNER RECORDATION CERTIFICATE
Filing Requirement of Act 74, Mich. P.A. 1970

RECORDED

DEC 22 1995 PM 2:31

For corners in

Dickinson (County)	Located In:	Corner Code ##
1. Public Land Survey	T 39N R 29W	G-7
G-7 16 15 21 22 E-6 17 16	T 39N R 29W	E-6
2. Property Controlling in Section	T R	
3. Miscellaneous Property in Sec.	S T R	
4. Lot No. _____, Recorded Plat _____	S T R	
5. Private Claims _____	S T R	

RECORDED DEEDS
DICKINSON COUNTY
MICHIGAN

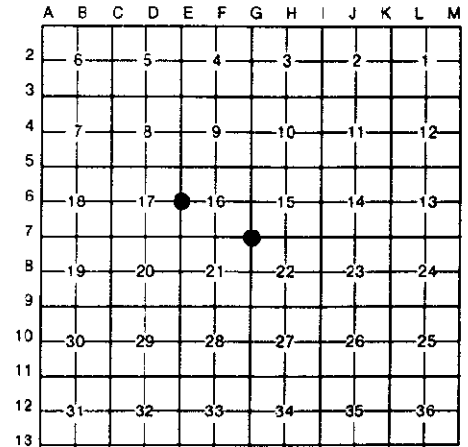
Register of Deeds Stamp & File Number

I, James H. Moore, in a field survey on September 6, 1995, do hereby certify that under requirements of P.A. 74, Michigan P.A. of 1970, the corner points mentioned in lines 1 and 2 above were in conformance with regulations and rules therefore as required in the current manual of survey instructions of the United States Department of the Interior, Bureau of Land Management or by a decree of a Court of Law and/or that the corner points mentioned in lines 3, 4 and 5 above were in conformance with the rules of the Michigan Board of Land Surveyors or by a Decree of a Court of Law; established, re-established, monumented, re-monumented, recovered, found as expressed below:

NOTE: Not more than 4 corners, all in the same town and range, may be recorded on this certificate.

A. Description of original monument and accessories and/or subsequent restoration:

G-7 Original Corner - Post Set by J. H. Mullet October 1849	E-6 Original Corner - Post Set by J. H. Mullet 1849
Original Bearing Trees	Original Bearing Trees
15" Y. Pine N60°E 5 Links	30" W. Pine N77°W 19 Links
10" Y. Pine S35°W 17 Links	30" W. Pine N44°E 11 Links



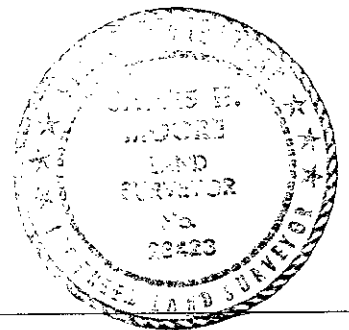
B. Description of corner evidence found and/or method applied in restoring or reestablishing corner:

G-7 Found Railroad Spike as Per Sundberg, Carlson's Notes. Spike Was Set by U.P. Engineering 1994 Falls in Hole in Black Top Road on Top of Hill Record Research On File With Register of Deeds	E-6 Found 8" Jack Pine as Per Sundberg, Carlson's Notes. Did Some More Searching and Found 5/8" Rebar on Fence Line That Fit With Blaze and Nail on Jack Pine East of Corral Record Research On File With Register of Deeds
---	---

ACCEPTED BY THE DICKINSON COUNTY SURVEY PEER GROUP AS THE OFFICIAL CORNER UNDER MICHIGAN PUBLIC ACT 345 OF 1990 AT A MEETING HELD ON 11-20-95
C.H.P.
COUNTY REPRESENTATIVE

C. Description of monument for corner and accessories established to perpetuate locating the position of the corner:

G-7 Set New Dickinson County Capped Aluminum Monument in New Monument Box. Monument Stamped to Identify Corner. Referenced as Follows: Telephone Riser S89°E 31.13' Carsonite Rail - Reference Monument S42°E 32.50' 8" Sugar N76°W 42.49' Power Pole N37°W 47.65'	E-6 Set New Dickinson County Capped Aluminum Monument. Monument Stamped to Identify Corner. Referenced as Follows: 4" Elm N23°E 24.72' 6" W. Pine S01°E 50.15' 7" J. Pine N57°W 28.16' 8" J. Pine N07°W 10.40' Carsonite Rail East 0.2'
--	--



Signed by James H. Moore
Surveyor's Michigan License No. 28423

Date 11/20/95