

SURVEY &
MONUMENTATION

DEC 18 1995

COMMISSION

LAND CORNER RECORDATION CERTIFICATE
Filing Requirement of Act 74, Mich. P.A. 1970

RECORDED
05 NOV 22 PM 2:30

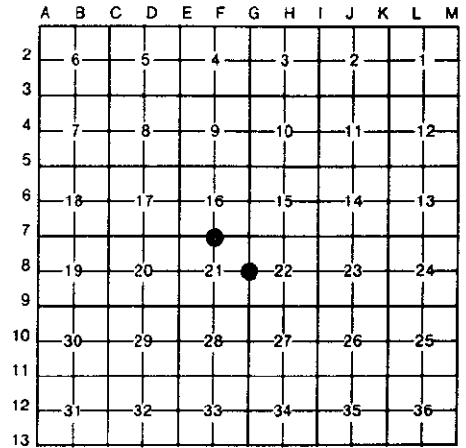
For corners in

Dickinson (County)	Located In:	Corner Code #/
1. Public Land Survey	T 39N R 29W	F-7
F-7 16	T 39N R 29W	G-8
21	T _____ R _____	
G-8 21 22	T _____ R _____	
2. Property Controlling in Section	S _____ T _____ R _____	
3. Miscellaneous Property in Sec.	S _____ T _____ R _____	
4. Lot No. _____, Recorded Plat _____		
5. Private Claims _____		

REGISTER OF DEEDS
CLERK
JAMES H. MOORE
20423

Register of Deeds Stamp & File Number

I, James H. Moore, in a field survey on September 6, 19 95, do hereby certify that under requirements of P.A. 74, Michigan P.A. of 1970, the corner points mentioned in lines 1 and 2 above were in conformance with regulations and rules therefore as required in the current manual of survey instructions of the United States Department of the Interior, Bureau of Land Management or by a decree of a Court of Law and/or that the corner points mentioned in lines 3, 4 and 5 above were in conformance with the rules of the Michigan Board of Land Surveyors or by a Decree of a Court of Law; established, re-established, monumented, re-monumented, recovered, found as expressed below:



NOTE: Not more than 4 corners, all in the same town and range, may be recorded on this certificate.

A. Description of original monument and accessories and/or subsequent restoration:

F-7 Original Corner - Post Set by J. H. Mullet 1849	G-8 Original Corner - Post Set by J. H. Mullet October 1849
Original Bearing Trees	Original Bearing Trees
26" Y. Pine N55°E 13 Links	16" Y. Pine S38°E 40 Links
30" Y. Pine S25°W 61 Links	10" Y. Pine N30°W 18 Links

B. Description of corner evidence found and/or method applied in restoring or reestablishing corner:

F-7 Found 1" Iron Pipe With Corner Post and 3 Existing Bearing Trees, Accepted This as Corner Position	G-8 Sundberg, Carlson Found 3/4" Iron Bar Set by Perkins at Road CL's, Suggested Accepting Iron Bar as Found
Fence Runs West and South	Roads North and West, Fence Line East
Record Research On File With Register of Deeds	Record Research On File With Register of Deeds

ACCEPTED BY THE DICKINSON COUNTY
SURVEY PEER GROUP AS THE OFFICIAL
CORNER UNDER MICHIGAN PUBLIC ACT
345 OF 1990 AT A MEETING HELD ON
11-20-95
RAP
COUNTY REPRESENTATIVE

C. Description of monument for corner and accessories established to perpetuate locating the position of the corner:

F-7 Replaced 1" Iron Pipe With New Dickinson County Capped Aluminum Monument. Monument Stamped to Identify Corner. Referenced as Follows:	G-8 Set New Dickinson County Capped Aluminum Monument. Monument Stamped to Identify Corner. Referenced as Follows:
Existing 9" J. Pine N22°W 24.81'	SE Corner House Fr. #N1105 N46°W 163.25'
Existing 8" J. Pine S53°W 26.53'	W. Pine S71°E 55.10'
New 7" J. Pine S07°W 41.04'	W. Pine S19°E 75.37'
Existing 8" J. Pine S79°W 25.32'	Carsonite
	Rail South 1.5'
	Power Pole S53°W 42.80'

Re - Blazed and Painted Existing BT's and Set 10 d Galv. Nails and Washers in all BT's

Signed by James H. Moore
Surveyor's Michigan License No. 28423

Date 11/20/95

