

DEC 18 1995

COMMISSION

LAND CORNER RECORDATION CERTIFICATE
Filing Requirement of Act 74, Mich. P.A. 1970

RECORDED

NOV 22 PM 2:31

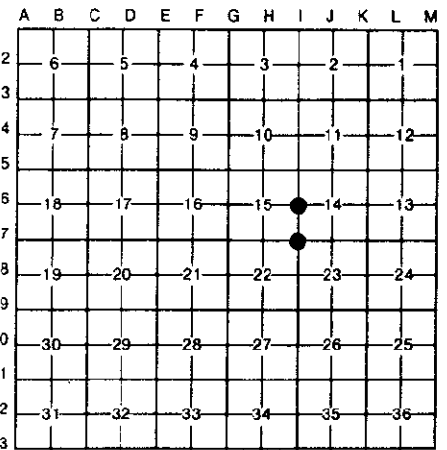
For corners in

Form with fields for Dickinson (County), Located In, Corner Code #, and numbered sections 1-5 for Public Land Survey, Property Controlling, Miscellaneous, Lot No., and Private Claims.

Register of Deeds Stamp & File Number

REGISTER OF DEEDS
DICKINSON COUNTY
NOV 22 1995

I, James H. Moore, in a field survey on September 6, 1995, do hereby certify that under requirements of P.A. 74, Michigan P.A. of 1970, the corner points mentioned in lines 1 and 2 above were in conformance with regulations and rules therefore as required in the current manual of survey instructions of the United States Department of the Interior, Bureau of Land Management or by a decree of a Court of Law and/or that the corner points mentioned in lines 3, 4 and 5 above were in conformance with the rules of the Michigan Board of Land Surveyors or by a Decree of a Court of Law; established, re-established, monumented, re-monumented, recovered, found as expressed below:



NOTE: Not more than 4 corners, all in the same town and range, may be recorded on this certificate.

A. Description of original monument and accessories and/or subsequent restoration:

Table with 2 columns: 1-7 Original Corner - Post Set by J. H. Mullet 1849 and 1-6 Original Corner - Post Set by J. H. Mullet 1849. Includes original bearing trees and measurements.

B. Description of corner evidence found and/or method applied in restoring or reestablishing corner:

Table with 2 columns: 1-7 Found 5/8" Rebar as Per Sundberg, Carlson's Notes and 1-6 Found Punched Rail Road Spike in Centerline Road as Per Sundberg, Carlson's Notes. Includes location details and record research references.

ACCEPTED BY THE DICKINSON COUNTY SURVEY PEER GROUP AS THE OFFICIAL CORNER UNDER MICHIGAN PUBLIC ACT 345 OF 1990 AT A MEETING HELD ON 11-20-95

R.G.P. COUNTY REPRESENTATIVE

C. Description of monument for corner and accessories established to perpetuate locating the position of the corner:

Table with 2 columns: 1-7 Replaced 5/8" Rebar With New Dickinson County Capped Aluminum Monument and 1-6 Set New Dickinson County Capped Aluminum Monument Box. Includes detailed measurements for power poles, guard rails, and fence posts.

Signed by James H. Moore

Date 11/20/95

Surveyor's Michigan License No. 28423

