

SURVEY & RE-MONUMENTATION

DEC 18 1995

COMMISSION

RECORDED

LAND CORNER RECORDATION CERTIFICATE NOV 22 PM 2:31
Filing Requirement of Act 74, Mich. P.A. 1970

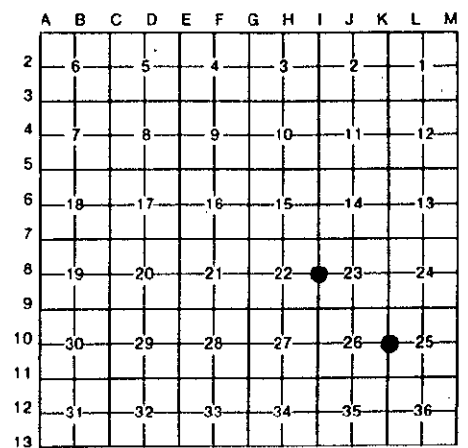
For corners in

Form with fields for Dickinson (County), Located In, Corner Code #, and numbered sections 1-5 for describing the survey.

REGISTER OF DEEDS
DICKINSON COUNTY

Register of Deeds Stamp & File Number

I, James H. Moore, in a field survey on September 6, 1995, do hereby certify that under requirements of P.A. 74, Michigan P.A. of 1970, the corner points mentioned in lines 1 and 2 above were in conformance with regulations and rules therefore as required in the current manual of survey instructions of the United States Department of the Interior, Bureau of Land Management or by a decree of a Court of Law and/or that the corner points mentioned in lines 3, 4 and 5 above were in conformance with the rules of the Michigan Board of Land Surveyors or by a Decree of a Court of Law; established, re-established, monumented, re-monumented, recovered, found as expressed below:



NOTE: Not more than 4 corners, all in the same town and range, may be recorded on this certificate.

A. Description of original monument and accessories and/or subsequent restoration:

Table with 2 columns: K-10 Original Corner - Post Set by J. H. Mullet 1849 and I-8 Original Corner - Post Set by J. H. Mullet 1849. Includes details on original bearing trees.

B. Description of corner evidence found and/or method applied in restoring or reestablishing corner:

Table with 2 columns: K-10 Found Boat Spike at CL Road as Per Sundberg, Carlson's Notes and I-8 Found 1 1/4" Solid Iron Pin as Per Sundberg, Carlson's Notes. Includes location and research instructions.

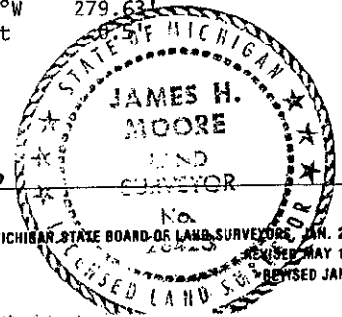
ACCEPTED BY THE DICKINSON COUNTY SURVEY PEER GROUP AS THE OFFICIAL CORNER UNDER MICHIGAN PUBLIC ACT 345 OF 1990 AT A MEETING HELD ON 11-20-95. ROP COUNTY REPRESENTATIVE

C. Description of monument for corner and accessories established to perpetuate locating the position of the corner:

Table with 2 columns: K-10 Set New Dickinson County Capped Aluminum Monument and I-8 Set New Dickinson County Capped Aluminum Monument. Includes bearings and distances for various reference points.

Signed by James H. Moore, Surveyor's Michigan License No. 28423

Date 11/20/95



Handwritten number 203