

**SURVEY &
MONUMENTATION**

DEC 18 1995

COMMISSION

RECORDED

LAND CORNER RECORDATION CERTIFICATE NOV 22 PM 2:31
Filing Requirement of Act 74, Mich. P.A. 1970

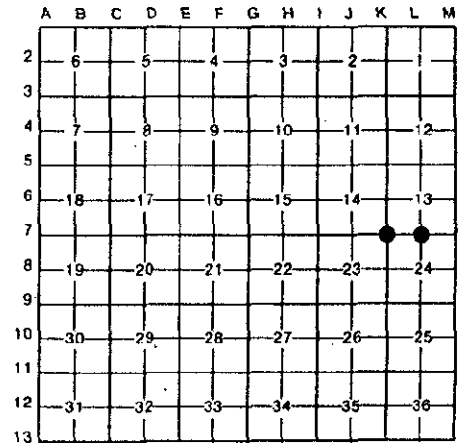
For corners in

Dickinson (County)	Located In:	Corner Code #
1. Public Land Survey K-7 14 13 L-7 13 23 24 24	T 39N R 29W T 39N R 29W T R T R	K-7 L-7
2. Property Controlling in Section	S T R S T R	
3. Miscellaneous Property in Sec.	S T R S T R	

REGISTER OF DEEDS
CLERK
LANSING, MICHIGAN

Register of Deeds Stamp & File Number

4. Lot No. _____, Recorded Plat _____
5. Private Claims _____



I, James H. Moore, in a field survey on September 6, 19 95, do hereby certify that under requirements of P.A. 74, Michigan P.A. of 1970, the corner points mentioned in lines 1 and 2 above were in conformance with regulations and rules therefore as required in the current manual of survey instructions of the United States Department of the Interior, Bureau of Land Management or by a decree of a Court of Law and/or that the corner points mentioned in lines 3, 4 and 5 above were in conformance with the rules of the Michigan Board of Land Surveyors or by a Decree of a Court of Law; established, re-established, monumented, re-monumented, recovered, found as expressed below:

NOTE: Not more than 4 corners, all in the same town and range, may be recorded on this certificate.

A. Description of original monument and accessories and/or subsequent restoration:

K-7 Original Corner - Post Set by J. H. Mullet 1849	L-7 Original Corner - Post Set by J. H. Mullet 1849
Original Bearing Trees	Original Bearing Trees
8" Y. Pine S28°E 30 Links	15" Y. Pine N70°E 18 Links
8" Aspen S60°W 12 Links	18" W. Pine S20°W 39 Links

B. Description of corner evidence found and/or method applied in restoring or reestablishing corner:

K-7 Found 1½" Iron Pipe 2.3' Above Ground As Per Sundberg, Carlson's Notes	L-7 Found Square Iron Bar As Per Sundberg, Carlson's Notes
166' North of Hilltop, Located on N-S Fence Line, North Side of Treeline East	8' North of Fence, 30' North of Centerline of Road on Centerline of Road Extended South
Record Research on File With Register of Deeds	Record Research on File With Register of Deeds

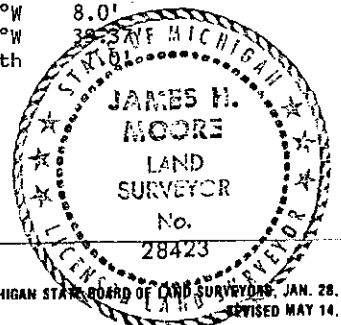
ACCEPTED BY THE DICKINSON COUNTY SURVEY PEER GROUP AS THE OFFICIAL CORNER UNDER MICHIGAN PUBLIC ACT 345 OF 1990 AT A MEETING HELD ON

11-20-95
RSP

COUNTY REPRESENTATIVE

C. Description of monument for corner and accessories established to perpetuate locating the position of the corner:

K-7 Replaced 1½" Iron Pipe With New Dickinson County Capped Aluminum Monument. Monument Stamped to Identify Corner. Referenced as Follows:	L-7 Drove New Dickinson County Capped Aluminum Monument Along Side Square Iron Bar. Monument Stamped to Identify Corner. Referenced as Follows:
7" Maple S72°E 17.73'	12" Jack Pine S77°E 26.09'
8" Maple South 14.39'	CL Telephone Riser S20°E 10.0'
11" Maple S61°W 7.61'	SE Corner Electrical
7" Maple N30°W 21.58'	Pad S65°W 8.0'
Carsonite Rail NE 1.3'	7" Jack Pine N16°W 39.33'
	Carsonite Rail North



Signed by James H. Moore
Surveyor's Michigan License No. 28423

Date 11/20/95

201