

DEC 1 8 1995

COMMISSION

RECORDED

LAND CORNER RECORDATION CERTIFICATE 1995 NOV 22 PM 2:31
Filing Requirement of Act 74, Mich. P.A. 1970

For corners in

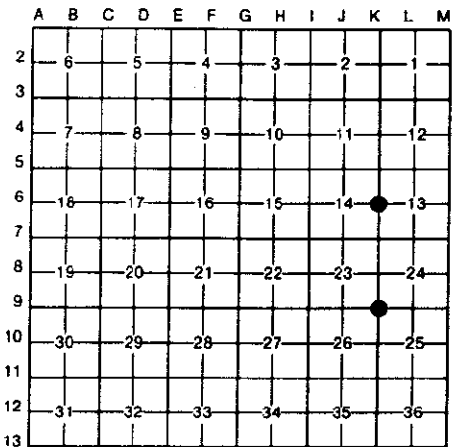
Table with columns: Dickinson (County), Located In, Corner Code #. Includes entries for Public Land Survey and Property Controlling in Section.

REGISTER OF DEEDS
DICKINSON COUNTY
3001

Register of Deeds Stamp & File Number

4. Lot No. , Recorded Plat
5. Private Claims

I, James H. Moore, in a field survey on September 6, 1995, do hereby certify that under requirements of P.A. 74, Michigan P.A. of 1970, the corner points mentioned in lines 1 and 2 above were in conformance with regulations and rules therefore as required in the current manual of survey instructions of the United States Department of the Interior, Bureau of Land Management or by a decree of a Court of Law and/or that the corner points mentioned in lines 3, 4 and 5 above were in conformance with the rules of the Michigan Board of Land Surveyors or by a Decree of a Court of Law; established, re-established, monumented, re-monumented, recovered, found as expressed below:



NOTE: Not more than 4 corners, all in the same town and range, may be recorded on this certificate.

A. Description of original monument and accessories and/or subsequent restoration:

Table with 2 columns: K-6 Post - Original Corner Set by J. H. Mullet 1849 and K-9 Post - Original Corner Set by J. H. Mullet 1849. Includes original bearing trees and link measurements.

B. Description of corner evidence found and/or method applied in restoring or reestablishing corner:

Table with 2 columns: K-6 Found 5/8" Bolt Flush With Ground As Per Sundberg, Carlson's Notes and K-9 Found 2 1/2" I.D. Iron Pipe As Per Sundberg, Carlson's Field Notes. Includes location and record research information.

ACCEPTED BY THE DICKINSON COUNTY SURVEY PEER GROUP AS THE OFFICIAL CORNER UNDER MICHIGAN PUBLIC ACT 345 OF 1990 AT A MEETING HELD ON 11-20-95. RHP COUNTY REPRESENTATIVE

C. Description of monument for corner and accessories established to perpetuate locating the position of the corner:

Table with 2 columns: K-6 Set a New Dickinson County Capped Aluminum Monument Along Side 5/8" Bolt (Couldn't Remove Bolt) Monument Stamped to Identify Corner. Referenced as Follows: and K-9 Replaced 2 1/2" Iron Pipe With New Dickinson County Capped Aluminum Monument. Monument Stamped to Identify Corner. Referenced as Follows: Includes bearing and distance measurements.

Signed by James H. Moore Surveyor's Michigan License No. 28423

Date 11/20/95

