

JAN 04 2001

RECORDED

SECTION

LAND CORNER RECORDATION CERTIFICATE
Filing Requirement of Act 74, Mich. P.A. 1970

1995 NOV 22 PM 2:31

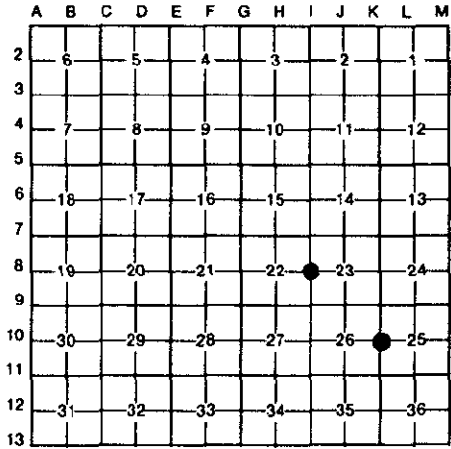
For corners in

Dickinson (County)	Located In:	Corner Code #
1. Public Land Survey	T 39N R 29W	K-10
K-10 26 25	T 39N R 29W	1-8
1-8 22 23	T R	
	T R	
2. Property Controlling in Section	S T R	
	S T R	
3. Miscellaneous Property in Sec.	S T R	
	S T R	

REGISTERED OF DEEDS
DICKINSON COUNTY
RON MULLET 1849-1990

Register of Deeds Stamp & File Number

- 4. Lot No. _____, Recorded Plat _____
- 5. Private Claims _____



I, James H. Moore, in a field survey on September 6, 19 95, do hereby certify that under requirements of P.A. 74, Michigan P.A. of 1970, the corner points mentioned in lines 1 and 2 above were in conformance with regulations and rules therefore as required in the current manual of survey instructions of the United States Department of the Interior, Bureau of Land Management or by a decree of a Court of Law and/or that the corner points mentioned in lines 3, 4 and 5 above were in conformance with the rules of the Michigan Board of Land Surveyors or by a Decree of a Court of Law; established, re-established, monumented, re-monumented, recovered, found as expressed below:

NOTE: Not more than 4 corners, all in the same town and range, may be recorded on this certificate.

A. Description of original monument and accessories and/or subsequent restoration:

K-10 Original Corner - Post Set by J. H. Mullet 1849	1-8 Original Corner - Post Set by J. H. Mullet 1849
Original Bearing Trees	Original Bearing Trees
22" W. Pine N45°E 26 Links	10" Maple N66°W 4 Links
24" W. Pine S68°W 9 Links	10" Maple N46°E 28 Links

B. Description of corner evidence found and/or method applied in restoring or reestablishing corner:

K-10 Found Boat Spike at CL Road as Per Sundberg, Carlson's Notes	1-8 Found 1 1/2" Solid Iron Pin as Per Sundberg, Carlson's Notes
Located on North-South Fence Line	69' East of County Road 577
Record Research On File With Register of Deeds	Record Research On File With Register of Deeds

ACCEPTED BY THE DICKINSON COUNTY SURVEY PEER GROUP AS THE OFFICIAL CORNER UNDER MICHIGAN PUBLIC ACT 345 OF 1990 AT A MEETING HELD ON

11-20-95
RJP

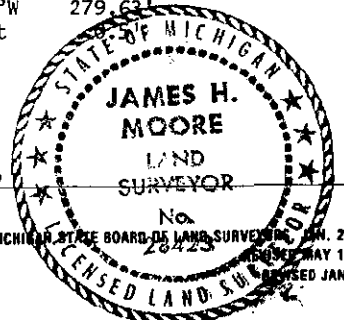
COUNTY REPRESENTATIVE

C. Description of monument for corner and accessories established to perpetuate locating the position of the corner:

K-10 Set New Dickinson County Capped Aluminum Monument. Monument Stamped to Identify Corner. Referenced as Follows:	1-8 Set New Dickinson County Capped Aluminum Monument on South Side of Existing 1 1/2" Pin (Couldn't Remove Old Pin) Monument Stamped to Identify Corner. Referenced as Follows:
SE Corner Garage N23°E 145.63'	NE Building Corner N45°W 194.98'
5" Red Pine N78°E 105.92'	CL Road West 69.87'
SW House Corner S32°W 187.03'	Power Pole S75°W 37.36'
Power Pole S17°W 33.50'	Power Pole N2°W 254.11'
Carsonite Rail w/ Reference Monument N38°W 37.40'	Power Pole S13°W 279.63'
	Carsonite Rail East

Signed by James H. Moore
Surveyor's Michigan License No. 28423

Date 11/20/95



202