

DEC 18 1995

COMMISSION

LAND CORNER RECORDATION CERTIFICATE
Filing Requirement of Act 74, Mich. P.A. 1970

RECORDED

NOV 22 PM 2:31

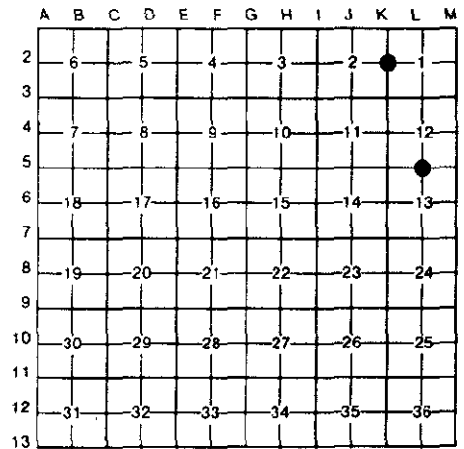
For corners in

Table with columns: Dickinson (County), Located in:, Corner Code #. Includes entries for Public Land Survey and Property Controlling in Section.

Register of Deeds Stamp & File Number

4. Lot No. Recorded Plat
5. Private Claims

I, James H. Moore, in a field survey on September 6, 1995, do hereby certify that under requirements of P.A. 74, Michigan P.A. of 1970, the corner points mentioned in lines 1 and 2 above were in conformance with regulations and rules therefore as required in the current manual of survey instructions of the United States Department of the Interior, Bureau of Land Management or by a decree of a Court of Law and/or that the corner points mentioned in lines 3, 4 and 5 above were in conformance with the rules of the Michigan Board of Land Surveyors or by a Decree of a Court of Law; established, re-established, monumented, re-monumented, recovered, found as expressed below:



NOTE: Not more than 4 corners, all in the same town and range, may be recorded on this certificate.

A. Description of original monument and accessories and/or subsequent restoration:

L-5 Original Corner - Post Set by J. H. Mullet 1849 K-2 Original Corner - Post Set by J. H. Mullet 1849
Original Bearing Trees
18" W. Pine S50°W 7 Links
18" W. Pine N02°E 8 Links
12" Sugar N12°W 6 Links
12" Aspen S77°E 25 Links

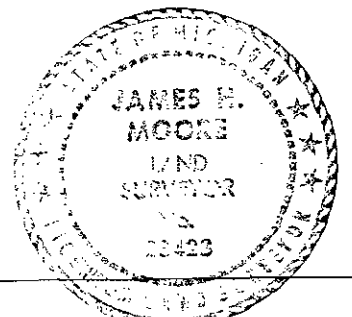
B. Description of corner evidence found and/or method applied in restoring or reestablishing corner:

L-5 Found 1 1/2" Iron Pipe and One BT as Per Sundberg, Carlson's Notes
K-2 Found 2" Boiler Flu. With Bearing Trees as Per Sundberg, Carlson's Notes
Located on East-West Fence Line, East of Small Pines
North Edge of Swamp, Barbed Wire Fence Runs West
Record Research On File With Register of Deeds

ACCEPTED BY THE DICKINSON COUNTY SURVEY PEER GROUP AS THE OFFICIAL CORNER UNDER MICHIGAN PUBLIC ACT 345 OF 1990 AT A MEETING HELD ON 11-20-95
R.C.P.
COUNTY REPRESENTATIVE

C. Description of monument for corner and accessories established to perpetuate locating the position of the corner:

L-5 Set New Dickinson County Capped Aluminum Monument on East-West Fence Line. Monument Stamped to Identify Corner. Referenced as Follows:
5" Maple N14°W 25.69'
4" Sugar S42°E 18.04'
12" Maple N59°W 12.68'
20" Oak N63°W 7.48'
Carsonite Rail West 1.0'
K-2 Set New Dickinson County Capped Aluminum Monument. Monument Stamped to Identify Corner. Referenced as Follows:
6" Sugar S35°E 11.45'
4" Sugar S22°W 9.46'
7" Sugar West 18.55'
8" Sugar N51°W 15.60'
Carsonite Rail North 1.0'



Signed by James H. Moore
Surveyor's Michigan License No. 28423

Date 11/20/95