

MAR 03 1998

RECORDED

1997 DEC 10 PM 3:56

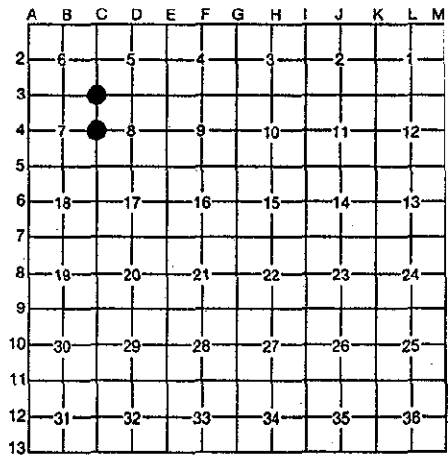
SECTION LAND CORNER RECORDATION CERTIFICATE Filing Requirement of Act 74, Mich. P.A. 1970

For corners in Dickinson (County) Located in: Corner Code # Breitung Twp. 1. Public Land Survey T 39N R 30W C-3 C-4 2. Property Controlling in Section S T R 3. Miscellaneous Property in Section S T R

REGISTER OF DEEDS DICKINSON COUNTY RON MULLETT COUNTY CLERK Register of Deeds Stamp & File Number

4. Lot No. , Recorded Plat 5. Private Claims

I, Robert F. Perkins, in a field survey on Oct. 1, 1997, do hereby certify that under requirements of P.A. 74, Michigan P.A. of 1970, the corner points mentioned in lines 1 and 2 above were in conformance with regulations and rules therefore as required in the current manual of survey instructions of the United States Department of the Interior, Bureau of Land Management or by a decree of a Court of Law and/or that the corner points mentioned in lines 3, 4 and 5 above were in conformance with the rules of the Michigan Board of Professional Surveyors or by a Decree of a Court of Law; established, re-established, monumented, re-monumented, recovered, found as expressed below:



NOTE: Not more than 4 corners, all in the same town and range, may be recorded on this certificate.

A. Description of original monument and accessories and/or subsequent restoration:

- C-3 Southeast Corner, Section 6 Post by James Mullett, D.S. 1849 Original Bearing Trees W. Pine 18" S42°E 33 Lks. W. Pine 18" N44°E 29 Lks. C-4 East 1/4 Corner, Section 7 Post by James Mullett, D.S. 1849 Original Bearing Trees W. Pine 8" S55°E 8 Lks. Aspen 8" N80°W 10 Lks.

ACCEPTED BY THE DICKINSON COUNTY SURVEY PEER GROUP AS THE OFFICIAL CORNER UNDER MICHIGAN PUBLIC ACT 345 OF 1990 AT A MEETING HELD ON 12-9-97 RFP COUNTY REPRESENTATIVE

B. Description of corner evidence found and/or method applied in restoring or reestablishing corner:

- C-3 No Evidence of Original Corner or Accessories Found. Found 1 1/2" Stamped Iron Pipe projecting ± 22" with Remains of Ancient Fences (Down) running North, South & West. Stamped Pipe Set by Oliver Iron Mining Co. prior to 1900. 3 Existing Bearing Trees. Corner Researched in 1996 Program. C-4 No Evidence of Original Corner or Accessories Found. Found 1" Iron Bar buried ± 6" in Gravel Road with Ancient Fence Line running North. Corner Researched in 1996 Program.

C. Description of monument for corner and accessories established to perpetuate locating the position of the corner:

- C-3 Accepted above described Pipe as Best Evidence of Corner. Placed 2 1/2" Stamped D.C. Remon. Corner East of and adjacent to Existing Pipe. New Witnesses: Maple 6" S41°W (M.B.) 19.47' Ex. B.T. Maple 14" N57°W (M.B.) 26.60' Ex. B.T. Maple 8" S80°E (M.B.) 29.25' Ex. B.T. Maple 8" N38°E (M.B.) 30.00' Carsonite Stake East 0.6' C-4 Accepted above described Iron Bar as Best Remaining Evidence of Corner Location. Replaced Iron Bar with 2 1/2" Stamped D.C. Remon. Corner. Set 3 1/2" Stamped Witness Corner 33.0' North at End of Fence. New Witnesses: P. Pole #72-4455 S20°E (M.B.) 46.62' Maple 4" N52°W (M.B.) 43.10' Maple 3" N03°E (M.B.) 36.24' Oak 5" N21°E (M.B.) 31.95'

Signed by [Signature] Surveyor's Michigan License No. 12027

Date NOV. 21, 1997 FORM APPROVED BY MICHIGAN STATE BOARD OF PROFESSIONAL SURVEYORS, JAN. 28, 1971 PERKINS No. 12027 PROFESSIONAL SURVEYOR REVISED MAY 14, 1975 REVISED JAN., 1983