

LAND CORNER RECORDATION CERTIFICATE
Filing Requirement of Act 74, Mich. P.A. 1970

RECORDED

1998 DEC 16 PM 12: 29

For corners in Dickinson Located In: _____ Corner Code # _____
 (County)

1. Public Land Survey T 40N R 28W C-2
WAUCEDAHA T _____ R _____ C-3

2. Property Controlling in Section S _____ T _____ R _____
 S _____
 T _____ R _____

3. Miscellaneous S _____ T _____ R _____
 S _____ T _____ R _____

Property in Sec. S _____ T _____

SURVEY & REMONUMENTATION
 MAR 16 1999

REGISTER OF DEEDS
 DICKINSON COUNTY
 IRON MOUNTAIN, MICHIGAN

Register of Deeds Stamp & File Number

4. Lot No. _____, Recorded Plat _____ SECTION _____

5. Private Claims _____

I, Robert R. Spear Jr., in a field survey on November 12, 1998 do hereby state that under requirements of P.A. 74, Michigan P.A. of 1970, the corner points mentioned in lines 1 and 2 above were in conformance with regulations and rules therefore as required in the current manual of survey instructions of the United States Department of the Interior, Bureau of Land Management or by a decree of a Court of Law and /or that the corner points mentioned in lines 3, 4 and 5 above were in conformance with the rules of the Michigan Board of Land Surveyors or by a Decree of a Court of Law; established, re-established, monumented, recovered, found as expressed below:

NOTE: Not more than 2 corners, all in the same town and range, may be recorded on this certificate.

A. Description of original monument and accessories and/or subsequent restoration:

C - 2: Quarter Corner Common to Sections 5 and 6.
 1849: James Mullett, DS set a Quarter Section Post at 40.00 chains North of the Southeast Corner of Section 6 and established the following Bearing Trees:

Hemlock 18" N56E, 8 links
 Lynn 24" N70W, 8 links

1965: Frank J. Bray, RLS re-established the corner position by proportioned distances to corners North and South. He placed a 1" iron pipe with a 4" aluminum cap and established the following NBT's:

H. Maple 8" S74E, 40 links
 Elm 9" S36W, 53 links

C - 3: Section Corner Common to Sections 5, 6, 7 and 8.

1849: James Mullett, DS set a Post for the Section corner with no description given as to its type. He established the following Bearing Trees:

Hemlock 10" N70E, 18 links Hemlock 12" S36W, 6 links

1965: Frank J. Bray, RLS re-established the corner position at the location of the point of an old downed post, which checked well with 1/4 corners East-West and Section Corner and stream call North. He placed a 1" id. Pipe and 4" dia. aluminum cap and established the following NBT's:

Elm 10" S60W, 30.5 links H. Maple 8" N30W, 33.5 links
 H. Maple 6" N58E, 9 links

B. Description of corner evidence found and/or method applied in restoring or reestablishing corner:

C - 2: 1998: Found the monument as described and established by Frank J. Bray. The 8" H. Maple is a 9" triple Maple and is alive. The 9" Elm is gone. Accepted the monument as a careful and faithful perpetuation of the position of the original corner.

C - 3: 1998: Found the monument as described and established by Frank J. Bray. The monument is located on the W'yly summit of a 30' high rock knob. The elm NBT is now a 20' high stub. A 6' high squared and scribed wood post is in place next to the monument. Accepted the monument as a careful and faithful perpetuation of the position of the original corner.

C. Description of monument for corner and accessories established to perpetuate locating the position of the corner:

C - 2: 1998: Monument is a 1 1/2" od. pipe with a 4" dia. aluminum cap (a standard Michigan Dept. of Conserv. monument) stamped to identify the corner. Established the following accessories:

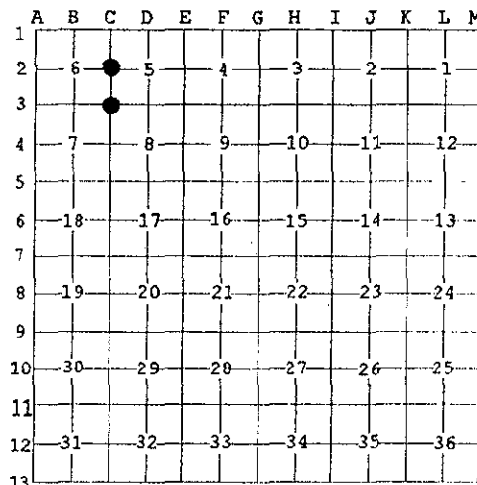
S64°E, 26.76'	9" triple Maple (Bray NBT)	S06°E, 15.33'	10" Maple
S74°W, 8.28'	12" Maple with location poster	N35°E, 18.30'	14" forked Maple
S20°W, 2.0'	Orange carsonite survey marker		

Face, nail and butt blazes in all NBT's. Blazes are painted orange and all distances are to DH nails placed in tree.

C - 3: 1998: Monument is a 1 1/2" od. pipe with a 4" dia. aluminum cap (a standard Michigan Dept. of Conserv. monument) stamped to identify the corner. Established the following accessories:

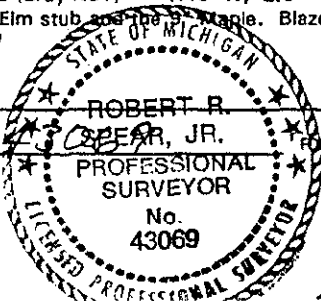
N28°W, 22.51'	13" Maple (Bray NBT)	N70°E, 6.01'	9" Maple (Bray NBT)
S51°E, 12.43'	5" Ironwood	S50°W, 10.64'	7" Maple with location poster
S63°W, 20.50'	12" 20' high Elm stub (Bray NBT)	N45°W, 2.0'	Orange carsonite survey marker

Face, nail and butt blazes in all NBT's except the Elm stub and the 9" Maple. Blazes are painted orange and all distances are to DH nails placed in tree.



ACCEPTED BY THE DICKINSON COUNTY SURVEY PEER GROUP AS THE CORNER UNDER MICHIGAN P.A. 345 OF 1990 AT A MEETING 12-14-98
Robert R. Spear Jr.
 COUNTY REPRESENTATIVE

Signed by Robert R. Spear Jr. Date 12-16-98
 Surveyor's Michigan License No. _____



FORM APPROVED BY MICHIGAN STATE BOARD OF PROFESSIONAL SURVEYORS
 JAN. 28, 1971
 REVISED MAY 14, 1975
 REVISED JAN., 1983
 REVISED OCT., 1995

Libor? Page 437