

**LAND CORNER RECORDATION CERTIFICATE**  
**Filing Requirement of Act 74, Mich. P.A. 1970**

For corners in Dickinson (County) Located In: T 40N R 28W Corner Code # D-3  
WAUCEOAN T      R      E-3

2. Property Controlling in Section S      T      R       
 S       
 T      R     

3. Miscellaneous S       
 T      R       
 Property in Sec. S       
 T      R     

4. Lot No.     , Recorded Plat     

5. Private Claims      SECTION     

RECORDED  
 1998 DEC 16 PM 12: 29

REGISTER OF DEEDS  
 DICKINSON COUNTY  
 IRON MOUNTAIN, MICHIGAN

Register of Deeds Stamp & File Number

SURVEY &  
 RECOMMENDATION  
 MAR 26 1999

I, Robert R. Spear Jr., in a field survey on November 12, 1998 do hereby state that under requirements of P.A. 74, Michigan P.A. of 1970, the corner points mentioned in lines 1 and 2 above were in conformance with regulations and rules therefore as required in the current manual of survey instructions of the United States Department of the Interior, Bureau of Land Management or by a decree of a Court of Law and /or that the corner points mentioned in lines 3, 4 and 5 above were in conformance with the rules of the Michigan Board of Land Surveyors or by a Decree of a Court of Law; established, re-established, monumented, recovered, found as expressed below:

**NOTE:** Not more than 2 corners, all in the same town and range, may be recorded on this certificate.

A. Description of original monument and accessories and/or subsequent restoration:  
**D - 3: Quarter Corner Common to Sections 5 and 8.**

1849: James Mullett, DS set a Quarter Section Post, with no description given as to its type. He established the following Bearing Trees:  
 Cedar 14" S68W, 10 links Birch 8" N25W, 9 links  
 1965: Frank J. Bray, RLS re-established the corner position at the location of a wood post and point of older poster, which checked good with stream to West and swamp edge to East. Bray indicates it also checks well with Section Corners East and West. He placed a 1" id. Pipe and 4" dia. aluminum cap and established the following NBT's:  
 Tamarack 9" East, 50 links Spruce 10" S10E, 61.5 links

**E - 3: Section Corner Common to Sections 4, 5, 8 and 9.**  
 1849: James Mullett, DS set a Post for the Section corner, with no description given as to its type. He established the following Bearing Trees:  
 Spruce 3" N25W, 10 links Birch 3" N60E, 31 links  
 1997: Coleman Engineering survey crew located a 1" pipe with a Michigan Dept. Of Conservation cap affixed and stamped to identify the corner.

B. Description of corner evidence found and/or method applied in restoring or reestablishing corner:

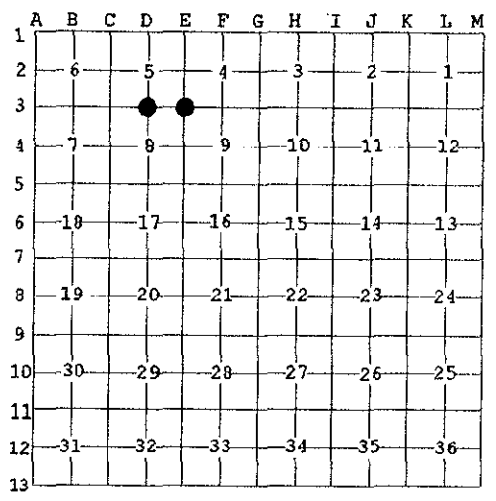
**D-3: 1998:** Found the monument as described and established by Frank J. Bray. The monument is located 35' East of a creek next to two old wood post and a large stone. The Tamarack NBT is now a 30' high stub with blazes and scribing visible. The 10" Spruce is now 18" and insect infested, with a 10" twin W. Birch growing between it and the monument. Accepted the monument as a careful and faithful perpetuation of the position of the original corner.

**E-3: 1997:** Coleman Engineering survey crew located a 1" pipe with a Michigan Department Of Conservation cap affixed and stamped to identify the corner. The monument is located at the intersection of well marked blue paint line N, S, E, and W. It is at the NE corner of a recent timber sale and the Coleman crew found the GLO call to stream North to be good. They found the following witnesses:  
 Cedar 18" N55W, 15' Cedar 11" S03E, 49'  
 Balsam 8" S70E, 6.6' and down.  
**1998:** Found the monument and accessories as described by Coleman Engineering and based on the approved recommendation accepted the monument as a careful and faithful perpetuation of the position of the original corner.

C. Description of monument for corner and accessories established to perpetuate locating the position of the corner:

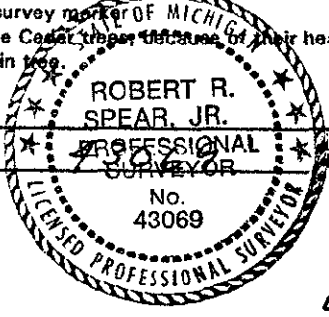
**D-3: 1998:** Monument is a 1 1/2" od. pipe with a 4" dia. aluminum cap (a standard Michigan Dept. of Consv. monument) stamped to identify the corner. Established the following accessories:  
 N08°E, 8.76' 7" Balsam with location poster N71°E, 17.70' 16" W. Birch  
 S81°E, 33.68' 9" Tamarack stub (Bray NBT) S38°E, 15.47' 5" Spruce  
 S04°E, 41.21' 18" Spruce (Bray NBT) West, 1.5' Orange carsonite survey marker  
 Face, nail and butt blazes in all NBT's except the Tamarack stub and the 18" Spruce, because of their health. Blazes are painted orange and all distances are to DH nails placed in tree.

**E-3: 1998:** Monument is a 1 1/2" od. pipe with a 4" dia. aluminum cap (a standard Michigan Dept. of Consv. monument) stamped to identify the corner. Established the following accessories:  
 N56°W, 14.96' 24" Cedar (existing NBT with visible scribing) N58°E, 27.67' 13" Spruce  
 S05°E, 49.17' 17" Cedar (existing NBT with some decay) S41°W, 54.92' 10" Spruce  
 North 2.0' Orange carsonite survey marker  
 Face, nail and butt blazes in all NBT's except the Cedar trees, because of their health, age, and existing blazes are still visible. Blazes are painted orange and all distances are to DH nails placed in tree.



ACCEPTED BY THE DICKINSON COUNTY SURVEY PEER GROUP AS THE OFFICIAL CORNER UNDER MICHIGAN PUBLIC ACT 345 OF 1990 AT A MEETING HELD ON 12-14-98  
R. R. Spear Jr.  
 COUNTY REPRESENTATIVE

Signed by Robert R. Spear Jr. Date 12-16-98  
 Surveyor's Michigan License No.     



FORM APPROVED BY MICHIGAN STATE BOARD OF PROFESSIONAL SURVEYORS  
 JAN. 28, 1971  
 REVISED MAY 14, 1975  
 REVISED JAN., 1983  
 REVISED OCT., 1995

*Liber 2 Page 431*