

SURVEY & REMONUMENTATION

MAR 03 1998

RECORDED

SECTION

LAND CORNER RECORDATION CERTIFICATE

1997 DEC 12 PM 1:37

Filing Requirement of Act 74, Mich. P.A. 1970

For corners in

<u>Dickinson</u> (County)	Located In:	Corner Code #
Waucedah Township	T40N R28W	<u>E-4</u>
1. Public Land Survey	T___ R___	E-5
	T___ R___	_____
	T___ R___	_____
2. Property Controlling in Section	S___ T___ R___	_____
	S___ T___ R___	_____
3. Miscellaneous Property in Sec.	S___ T___ R___	_____
	S___ T___ R___	_____

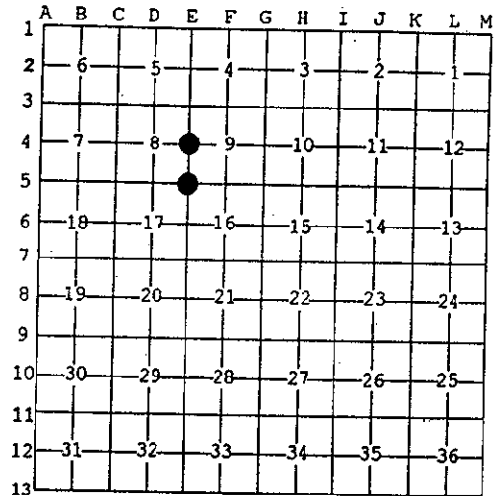
REGISTER OF DEEDS
DICKINSON COUNTY
IRON MOUNTAIN, MICHIGAN

Register of Deeds Stamp & File Number

4. Lot No. _____, Recorded Plat _____
5. Private Claims _____

I, James H. Moore, in a field survey on October 16, 1997 do hereby state that under requirements of P.A. 74, Michigan P.A. of 1970, the corner points mentioned in lines 1 and 2 above were in conformance with regulations and rules therefore as required in the current manual of survey instructions of the United States Department of the Interior, Bureau of Land Management or by a decree of a Court of Law and/or that the corner points mentioned in lines 3, 4 and 5 above were in conformance with the rules of the Michigan Board of Land Surveyors or by a Decree of a Court of Law, established, re-established, monumented, recovered, found as expressed below:

NOTE: Not more than 2 corners, all in the same town and range, may be recorded on this certificate.



A. Description of original monument and accessories and/or subsequent restoration:

E-4 - 1/4 corner common to Sections 8 and 9
Post by James H. Mullett, D.S. 1849
Hemlock 10" N60°E 12 L.
Hemlock 6" S75°W 21 L.

E-5 - corner common to Sections 8, 9, 16 and 17
Post by James H. Mullett, D.S. 1849

Cedar 14" S28°W 12 L.
Spruce 12" N76°E 12 L.
ACCEPTED BY THE DICKINSON COUNTY SURVEY PEER GROUP AS THE OFFICIAL CORNER UNDER MICHIGAN PUBLIC ACT 345 OF 1990 AT A MEETING HELD ON 12-9-97

RJP
COUNTY REPRESENTATIVE

B. Description of corner evidence found and/or method applied in restoring or reestablishing corner:

E-4 - found 1" galvanized pipe with 4" DNR stamped brass cap set at an existing corner location by B. Buckler in 1956 (old #17) 1956 bearing trees:

Cedar 12" S84°E 55 L.
Cedar 12" S25°E 46 L.

E-5 - found 1" galvanized pipe with 4" DNR stamped brass cap set from recovered evidence by B. Buckler in 1956 (old #15) 1956 bearing trees:

W. Pine 9" S89°E 7 L.
W. Pine 12" S80°W 36 L.

C. Description of monument for corner and accessories established to perpetuate locating the position of the corner:

E-4 - found above described monument in place
New Witnesses:

S. Maple 6" S72°W (M.B.) 14.93' nail/tag
S. Maple 11" S32°E (M.B.) 17.77' nail/tag
S. Maple 6" N75°E (M.B.) 12.82' nail/tag
S. Maple 9" N35°W (M.B.) 47.24' nail/tag

E-5 - found above described monument in place
New Witnesses:

Cedar 14" S64°E (M.B.) 13.4' nail/tag
Ash 6" N39°E (M.B.) 22.30' nail/tag
S. Maple 12" S69°W (M.B.) 29.18' nail/tag
Y. Birch 4" N53°W (M.B.) 26.32' nail/tag

placed carsonite marker North 0.80'

placed carsonite marker N45°W 0.73'

Signed by JAMES H. MOORE
Surveyor's Michigan License No. 28423

Date 12-8-97

