

LAND CORNER RECORDATION CERTIFICATE
Filing Requirement of Act 74, Mich. P.A. 1970

RECORDED

1998 DEC 16 PM 12: 29

For corners in
Dickinson
 (County)

Located In: Corner Code #

1. Public Land Survey
WAUCEDAH

T 40N R 28W E-9
 T _____ R _____ E-10
 T _____ R _____
 T _____ R _____

2. Property Controlling
 in Section

S _____ T _____ R _____
 S _____
 T _____ R _____

3. Miscellaneous

S _____
 T _____ R _____

Property in Sec.

S _____
 T _____ R _____

REGISTER OF DEEDS
 DICKINSON COUNTY
 IRON MOUNTAIN, MICHIGAN

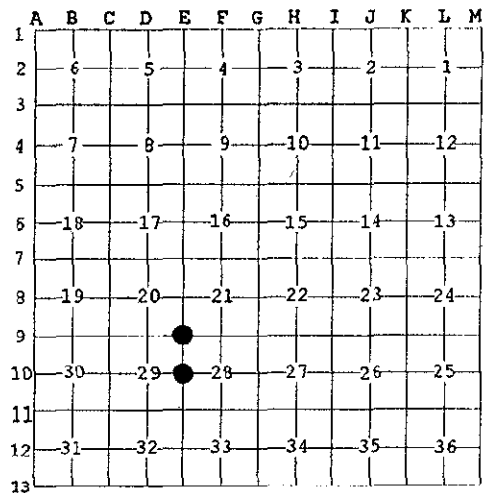
Register of Deeds Stamp & File Number

SURVEY &
 REMONUMENTATION

MAR 20 1999

4. Lot No. _____, Recorded Plat _____ SECTION _____
 5. Private Claims _____

I, Robert R. Spear Jr., in a field survey on December 8, 1998 do hereby state that under requirements of P.A. 74, Michigan P.A. of 1970, the corner points mentioned in lines 1 and 2 above were in conformance with regulations and rules therefore as required in the current manual of survey instructions of the United States Department of the Interior, Bureau of Land Management or by a decree of a Court of Law and/or that the corner points mentioned in lines 3, 4 and 5 above were in conformance with the rules of the Michigan Board of Land Surveyors or by a Decree of a Court of Law; established, re-established, monumented, recovered, found as expressed below:



NOTE: Not more than 2 corners, all in the same town and range, may be recorded on this certificate.

A. Description of original monument and accessories and/or subsequent restoration:

E-9: Section Corner Common to Sections 20, 21, 28 and 29.

1849: James Mullett, DS set a Section Post. No description given as to its type. He established the following Bearing Trees:

Elm 12" N80E, 11 links
 Maple 10" S70W, 10 links

1969: DNR random traverse notes indicate a temporary post placed here from stream calls. Distance to G-9 is 79.81 chains.

E-10: Quarter Corner Common to Sections 28 and 29.

1849: James Mullett, DS set Quarter Section Post.

No description given as to its type. He established the following Bearing Trees:

Fir 8" S46W, 8 links
 Sugar 6" N10W, 6 links

ACCEPTED BY THE DICKINSON COUNTY
 SURVEY PEER GROUP AS THE OFFICIAL
 CORNER UNDER MICHIGAN PUBLIC ACT
 345 OF 1990 AT A MEETING HELD ON

12-14-98

Robert R. Spear Jr.
 COUNTY REPRESENTATIVE

B. Description of corner evidence found and/or method applied in restoring or reestablishing corner:

E-9 & E-10: 1997: Coleman Engineering survey crew searched these two locations during the 1997 Dickinson County Remonumentation Program. No original evidence was recovered.

E-9: 1998: Again no original evidence was recovered. This corner was established from GLO river calls West and South, Swamp calls East and checked with course and distance of ascend ledge call to the North. Proportionate measurement was rejected as the method of re-establishment because, during the course of the survey from the SW corner of Section 33 (E-13) to the SW corner of Section 16 (E-7) it was found that the distance was over 3 chains long. Based on the distances between GLO line calls, most of this overage occurs North of the stream between E-7 and E-8. Also if strictly proportionate measure had been used for the North-South location of E-9 this would have placed it well North of the swamp to the East, which is called in the GLO notes. This same situation would have occurred with the corner position 1 mile to the South. After establishing the location of E-9, using the above mentioned line calls, it was found that the distances in the random line, field notes acquired from the DNR office in Baraga agreed reasonably with 1998 measurements to the corners 1 mile North and 1 mile East. Furthermore when this position was used to establish the North-South position of E-11 it was found to be in agreement with the GLO record.

E-10: 1998: Again no original evidence was recovered and this corner was established by proportionate measure between E-9 and E-11. This position is in agreement with the GLO record. For "summit of rocks" call North and "leave swamp" call South.

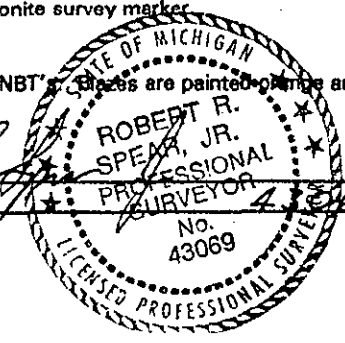
C. Description of monument for corner and accessories established to perpetuate locating the position of the corner:

E-9: 1998: Set a standard Dickinson County Survey monument stamped to identify the corner. Established the following accessories:
 N03°E, 47.64' 4" Spruce
 N50°E, 72.17' 13" Tamarack
 S56°E, 58.84' 12" Tamarack
 S37°W, 75.75' 9" Balsam
 West, 2.0' Orange carsonite survey marker

E-10: 1998: Set a standard Dickinson County Survey monument stamped to identify the corner. Established the following accessories:
 N11°W, 16.93' 4" Balsam
 N98°E, 14.86' 7" Balsam
 S10°W, 13.09' 5" Balsam
 N63°W, 3.60' 8" Balsam
 N50°E, 2.0' Orange carsonite survey marker
 Monument has boulders cemented around it.

Face, nail and butt blazes in all NBT's. Blazes are painted orange and all distances are to DH nails placed in tree.

Signed by _____
 Surveyor's Michigan License No. _____



Date 12-16-98
 FORM APPROVED BY MICHIGAN STATE BOARD OF PROFESSIONAL SURVEYORS

JAN. 28, 1971
 REVISED MAY 14, 1976
 REVISED JAN., 1983
 REVISED OCT., 1996

Liber 2 Page 421