

**SURVEY & REMONUMENTATION**

**MAR 03 1998**

**RECORDED**

**LAND CORNER RECORDATION CERTIFICATE**

Filing Requirement of Act 74, Mich. P.A. 1970 1997 DEC 12 PM 1:37

**SECTION**

For corners in

<u>Dickinson</u>	Located In:	Corner Code #
(County)		
<u>Waucedah Township</u>		
1. Public Land Survey	T <u>40NR</u> 28W	<u>E-2</u>
	T ___ R ___	<u>G-3</u>
	T ___ R ___	
	T ___ R ___	
2. Property Controlling in Section	S ___ T ___ R ___	<u>Seg #2</u>
	S ___ T ___ R ___	
3. Miscellaneous Property in Sec.	S ___ T ___ R ___	
	S ___ T ___ R ___	

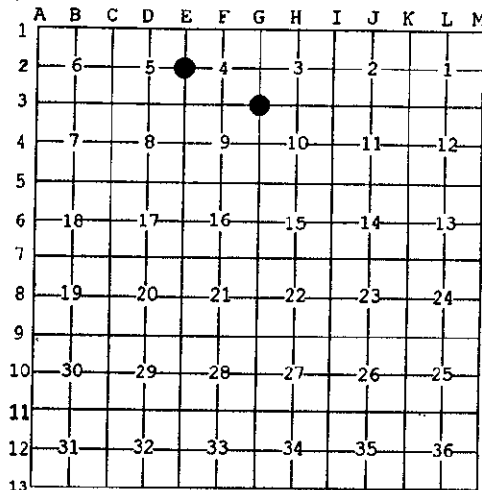
REGISTER OF DEEDS  
DICKINSON COUNTY  
IRON MOUNTAIN, MICHIGAN

Register of Deeds Stamp & File Number

4. Lot No. \_\_\_\_\_, Recorded Plat \_\_\_\_\_  
5. Private Claims \_\_\_\_\_

I, James H. Moore, in a field survey on October 15, 1997 do hereby state that under requirements of P.A. 74, Michigan P.A. of 1970, the corner points mentioned in lines 1 and 2 above were in conformance with regulations and rules therefore as required in the current manual of survey instructions of the United States Department of the Interior, Bureau of Land Management or by a decree of a Court of Law and /or that the corner points mentioned in lines 3, 4 and 5 above were in conformance with the rules of the Michigan Board of Land Surveyors or by a Decree of a Court of Law; established, re-established, monumented, recovered, found as expressed below:

NOTE: Not more than 2 corners, all in the same town and range, may be recorded on this certificate.



**A. Description of original monument and accessories and/or subsequent restoration:**

<u>E-2</u> - 1/4 corner common to Sections 4 and 5 Post by James H. Mullett, D.S. 1849	<u>G-3</u> - corner common to Sections 3, 4, 9 and 10 Post by James H. Mullett, D.S. 1849
Sugar 6" S5°E 09 L. Birch 8" N46°W 24 L.	W. Pine 14" S28°W 18 L. Sugar 10" N16°E 15 L.

ACCEPTED BY THE DICKINSON COUNTY SURVEY PEER GROUP AS THE OFFICIAL CORNER UNDER MICHIGAN PUBLIC ACT 345 OF 1990 AT A MEETING HELD ON 12-9-97

**B. Description of corner evidence found and/or method applied in restoring or reestablishing corner:**

<u>E-2</u> - found 1" galvanized pipe with 4" Michigan Department of Conservation Forestry Division stamped brass cap set by proportionate measure in 1959 by B. Buckler (old #351) 1959 bearing trees:	<u>G-3</u> - found 1" galvanized pipe with 4" Michigan Department of Conservation Forestry Division stamped brass cap set at an existing pipe by B. Buckler in 1959 (old #352) 1959 bearing trees:
Elm 9" S20°E 08 L. Elm 9" West 05 L.	W. Pine 36" S41°W 217-1/2 L.

R.H.P.  
COUNTY REPRESENTATIVE

**C. Description of monument for corner and accessories established to perpetuate locating the position of the corner:**

<u>E-2</u> - found above described monument in place New Witnesses:	<u>G-3</u> - found above described monument in place New Witnesses:
S. Maple 5" S5°W (M.B.) 10.83' nail/tag S. Maple 5" N85°W (M.B.) 10.16' nail/tag S. Maple 3" N34°E (M.B.) 11.30' nail/tag S. Maple 4" N90°E (M.B.) 26.95' nail/tag	J. Pine 6" S21°W (M.B.) 18.41' nail/tag J. Pine 11" N63°W (M.B.) 18.22' nail/tag R. Pine 5" N13°E (M.B.) 39.4' nail/tag R. Pine 13" N33°E (M.B.) 31.73' nail/tag

placed carsonite marker S65°E 0.95' placed carsonite marker South 1.0'

Signed by \_\_\_\_\_  
Surveyor's Michigan License No. \_\_\_\_\_

Date 12-8-97

