

MAY 07 1997

COMMISSION

RECORDED

LAND CORNER RECORDATION CERTIFICATE 1996 DEC 18 AM 11:17
Filing Requirement of Act 74, Mich. P.A. 1970

For corners in
DICKINSON
(County)
WAUCEDAH TWP.

Located In:

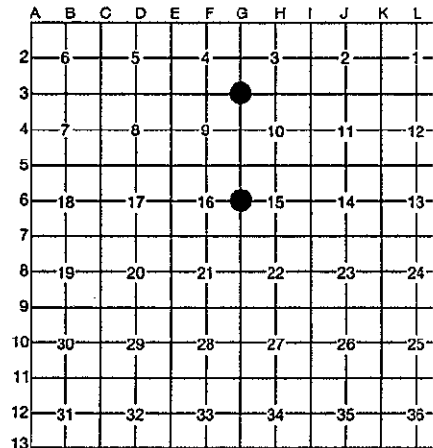
Corner Code #

REGISTER OF DEEDS
DICKINSON COUNTY
IRON MOUNTAIN, MI 49801

1. Public Land Survey	T	<u>40N</u>	R	<u>28W</u>	<u>G-3</u>
	T		R		<u>G-6</u>
	T		R		
	T		R		
2. Property Controlling in Section	S		T		
	S		T		
3. Miscellaneous	S		T		
Property in Section	S		T		

Register of Deeds Stamp & File Number

4. Lot No. _____, Recorded Plat _____
5. Private Claims _____



I, ROBERT F. PERKINS, in a field survey on 10-23, 1996, do hereby certify that under requirements of P.A. 74, Michigan P.A. of 1970, the corner points mentioned in lines 1 and 2 above were in conformance with regulations and rules therefore as required in the current manual of survey instructions of the United States Department of the Interior, Bureau of Land Management or by a decree of a Court of Law and/or that the corner points mentioned in lines 3, 4 and 5 above were in conformance with the rules of the Michigan Board of Professional Surveyors or by a Decree of a Court of Law; established, re-established, monumented, re-monumented, recovered, found as expressed below:

NOTE: Not more than 4 corners, all in the same town and range, may be recorded on this certificate.

A. Description of original monument and accessories and/or subsequent restoration:

G-3 CORNER COMMON TO SECTIONS 3-4-9-10
POST BY J. H. MULLETT, D.S. 1849
ORIGINAL BEARING TREES
W. PINE 14" S28°W 18 L.
SUGAR 10" N61°E 15 L.

G-6 ¼ CORNER COMMON TO SECTIONS 16/15
POST BY J. H. MULLETT, 1849
ORIGINAL BEARING TREES
LYNN 6" S80°E 18 L.
ELM 4" N06°W 16 L.

B. Description of corner evidence found and/or method applied in restoring or reestablishing corner:

G-3 FOUND D.N.R. CAPPED IRON PIPE
SET BY B. BUCKLER IN 1959 &
FILED ON PAGE 352 (OLD RECORDS).
B.T. 36" W. PINE S41°W 217½ L.
FOUND (DEAD).

G-6 FOUND 1" IRON PIPE WITH K.C. CORP.
4" CAP SET BY N. SPERHAKE IN 1963
BY SINGLE PROPORTIONATE METHOD.
BEARING TREES
W. BIRCH 6" S49°E 22½ L. (FOUND)
BALSAM 8" S30°W 30 L. (LOST)
NO RECORD OF THIS CERTIFICATE ON
FILE. COPY LOCATED AT CHAMPION
INTERNATIONAL CORP. NORWAY OFFICE.

ACCEPTED BY THE DICKINSON COUNTY
SURVEY PEER GROUP AS THE OFFICIAL
CORNER UNDER MICHIGAN PUBLIC ACT
345 OF 1990 AT A MEETING HELD ON
12-17-96
RFP
COUNTY REPRESENTATIVE

C. Description of monument for corner and accessories established to perpetuate locating the position of the corner:

G-3 FOUND ABOVE DESCRIBED 1" IRON PIPE
WITH 4" D.N.R. CAP.
NEW BEARING TREES:
W. PINE 14" N64°W (M.B.) 18.22' NAIL/TAG
W. PINE 5" N13°W (M.B.) 39.39' NAIL/TAG
R. PINE 14" N56°E (M.B.) 31.70' NAIL/TAG
W. PINE 8" S19°W (M.B.) 18.40' NAIL/TAG
PLACED CARSONITE MARKER ± 1' SOUTH.

G-6 FOUND AND ACCEPTED ABOVE DESCRIBED
CORNER.
NEW BEARING TREES:
FIR 5" N30°W (M.B.) 28.76' NAIL/TAG
FIR 6" N06°E (M.B.) 32.00' NAIL/TAG
FIR 12" N83°E (M.B.) 19.92' NAIL/TAG
SPRUCE 8" S28°W (M.B.) 45.25' NAIL/TAG
PLACED CARSONITE MARKER 1.0' WEST.

Signed by Robert F. Perkins

Date NOVEMBER 6, 1996

Surveyor's Michigan License No. 12027

FORM APPROVED BY MICHIGAN STATE BOARD OF PROFESSIONAL SURVEYORS, JAN 24, 1978

