

**SURVEY & REMONUMENTATION**

**MAR 03 1998**

**RECORDED**

**LAND CORNER RECORDATION CERTIFICATE**

Filing Requirement of Act 74, Mich. P.A. 1970/1997 DEC 12 PM 1:37

**SECTION**

For corners in

Dickinson Located in: Corner Code #  
 (County)  
Waucedah Township  
 1. Public Land Survey T40N R28W H-5  
 T R G-8  
 T R  
 T R  
 2. Property Controlling S T R  
 in Section S T R  
 3. Miscellaneous S T R  
 Property in Sec. S T R

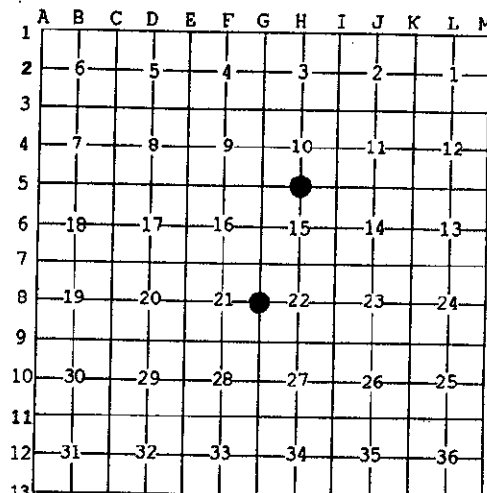
REGISTER OF DEEDS  
 DICKINSON COUNTY  
 IRON MOUNTAIN, MICHIGAN

Register of Deeds Stamp & File Number

4. Lot No. \_\_\_\_\_, Recorded Plat \_\_\_\_\_  
 5. Private Claims \_\_\_\_\_

I, James H. Moore, in a field survey on October 15, 1997 do hereby state that under requirements of P.A. 74, Michigan P.A. of 1970, the corner points mentioned in lines 1 and 2 above were in conformance with regulations and rules therefore as required in the current manual of survey instructions of the United States Department of the Interior, Bureau of Land Management or by a decree of a Court of Law and/or that the corner points mentioned in lines 3, 4 and 5 above were in conformance with the rules of the Michigan Board of Land Surveyors or by a Decree of a Court of Law; established, re-established, monumented, recovered, found as expressed below:

NOTE: Not more than 2 corners, all in the same town and range, may be recorded on this certificate.



**A. Description of original monument and accessories and/or subsequent restoration:**

H-5 - 1/4 corner common to Sections 10 and 15 Post by James H. Mullett, D.S. 1849  
 Hemlock 15" S33°E 16 L.  
 Hemlock 10" N47°E 33 L.

G-8 - 1/4 corner common to Sections 21 and 22 Post by James H. Mullett, D.S. 1849  
 Sugar 12" S35°E 05 L.  
 Sugar 14" N45°E 05 L.

ACCEPTED BY THE DICKINSON COUNTY SURVEY PEER GROUP AS THE OFFICIAL CORNER UNDER MICHIGAN PUBLIC ACT 345 OF 1990 AT A MEETING HELD ON 12-9-97

R.A.P.  
 COUNTY REPRESENTATIVE

**B. Description of corner evidence found and/or method applied in restoring or reestablishing corner:**

H-5 - found 1" galvanized pipe with 4" DNR stamped brass cap set at an existing corner location by B. Buckler in 1955 (old #13) 1955 bearing trees:  
 Y. Birch 12" N24°E 70 L.  
 Hemlock 14" S81°E 58 L.

G-8 - found 1" galvanized pipe with 4" K. C. Corp. stamped aluminum cap set by proportionate measure in 1964 by N. Spherhake (old #1056) 1964 bearing trees:  
 Spruce 8" N84°W 61 L.  
 Spruce 7" S60°E 34 L.

**C. Description of monument for corner and accessories established to perpetuate locating the position of the corner:**

H-5 - found above described monument in place New Witnesses:  
 S. Maple 5" S50°W (M.B.) 4.96' nail/tag  
 S. Maple 6" S3°E (M.B.) 13.43' nail/tag  
 S. Maple 7" N85°E (M.B.) 15.54' nail/tag  
 S. Maple 7" N11°W (M.B.) 26.57' nail/tag

G-8 - found above described monument in place New Witnesses:  
 Balsam 5" N21°E (M.B.) 2.82' nail/tag  
 Balsam 4" S89°E (M.B.) 5.46' nail/tag  
 Balsam 5" S40°E (M.B.) 5.43' nail/tag  
 Balsam 4" N67°W (M.B.) 10.5' nail/tag

placed carsonite marker N45°W 0.95' placed carsonite marker North 0.85'

Signed by \_\_\_\_\_  
 Surveyor's Michigan License No. 28423

Date 12-8-97

