

SURVEY &
REMONUMENTATION

MAR 03 1998

LAND CORNER RECORDATION CERTIFICATE
Filing Requirement of Act 74, Mich. P.A. 1970

RECORDED

1997 DEC 12 PM 1:37

For corners in SECTION

<u>Dickinson</u>	Located In:	Corner Code #
(County)		
Waucedah Township		
1. Public Land Survey	T40N R 28W	G-9
	T R	G-10
	T R	
	T R	
2. Property Controlling in Section	S T R	
	S T R	
3. Miscellaneous Property in Sec.	S T R	
	S T R	

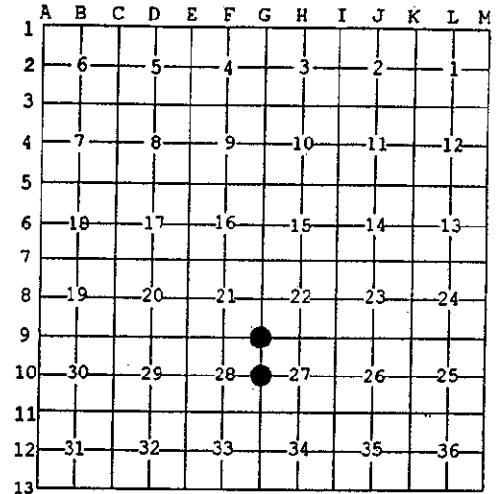
REGISTER OF DEEDS
DICKINSON COUNTY
IRON MOUNTAIN, MICHIGAN

Register of Deeds Stamp & File Number

4. Lot No. _____, Recorded Plat _____
5. Private Claims _____

I, James H. Moore, in a field survey on October 16, 1997 do hereby state that under requirements of P.A. 74, Michigan P.A. of 1970, the corner points mentioned in lines 1 and 2 above were in conformance with regulations and rules therefore as required in the current manual of survey instructions of the United States Department of the Interior, Bureau of Land Management or by a decree of a Court of Law and/or that the corner points mentioned in lines 3, 4 and 5 above were in conformance with the rules of the Michigan Board of Land Surveyors or by a Decree of a Court of Law; established, re-established, monumented, recovered, found as expressed below:

NOTE: Not more than 2 corners, all in the same town and range, may be recorded on this certificate.



A. Description of original monument and accessories and/or subsequent restoration:

G-9 - corner common to Sections 21, 22, 27 and 28 Post by James H. Mullett, D.S. 1849
 Sugar 12" S9°E 06 L.
 Hemlock 10" N25°W 30 L.

G-10 - 1/4 corner common to Sections 27 and 28 Post by James H. Mullett, D.S. 1849
 Cedar 14" N48°W 07 L.
 Hemlock 10" N48°W 07 L.

ACCEPTED BY THE DICKINSON COUNTY SURVEY PEER GROUP AS THE OFFICIAL CORNER UNDER MICHIGAN PUBLIC ACT 345 OF 1990 AT A MEETING HELD ON 12-9-97

ROP
COUNTY REPRESENTATIVE

B. Description of corner evidence found and/or method applied in restoring or reestablishing corner:

G-9 - found 1" galvanized pipe with 4" K.C. Corp. stamped aluminum cap set by proportionate measure in 1964 by N. Sperhake (old #1051) 1964 bearing trees:
 W. Birch 9" N33°W 48-1/2 L.
 Maple 5" N55°E 72-1/2 L.
 Maple 8" S14°E 18 L.
 Maple 6" S06°W 13-1/2 L.

G-10 - found 1" galvanized pipe with 4" DNR stamped brass cap set at an existing corner in 1958 by H.S. Peterson (old #315) 1958 bearing trees:
 Twin B. Ash 6" N40°E 50 L.
 Hemlock 14" S72°E 48-1/2 L.
 Cedar 18" N82°E 58 L.

C. Description of monument for corner and accessories established to perpetuate locating the position of the corner:

G-9 - found above described monument in place New Witnesses:
 S. Maple *10" S7°W (M.B.) 8.84' nail/tag
 S. Maple 5" S89°E (M.B.) 14.79' nail/tag
 Ash 5" N47°W (M.B.) 33.61' nail/tag
 Ash 4" S20°E (M.B.) 26.82' nail/tag

G-10 - found above described monument in place New Witnesses:
 Maple 7" N83°W (M.B.) 69.15' nail/tag
 Spruce 4" N60°E (M.B.) 24.14' nail/tag
 Maple 9" S02°W (M.B.) 38.60' nail/tag
 Maple 7" S46°W (M.B.) 58.34' nail/tag

placed carsonite marker North 1.23'

placed carsonite marker N30°E 0.90'

Signed by _____
Surveyor's Michigan License No. _____

Date 12-8-97

