

MAY 07 1997

COMMISSION

RECORDED

1996 DEC 18 AM 11:17

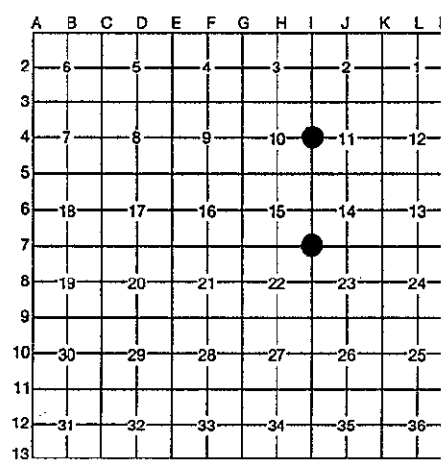
LAND CORNER RECORDATION CERTIFICATE
Filing Requirement of Act 74, Mich. P.A. 1970

For corners in DICKINSON (County) Located In: WAUCEDAHP TWP. Corner Code # 1-4, 1-5
1. Public Land Survey T 40N R 28W
2. Property Controlling in Section S T R
3. Miscellaneous Property in Section S T R

REGISTER OF DEEDS DICKINSON COUNTY
Register of Deeds Stamp & File Number

4. Lot No. , Recorded Plat
5. Private Claims

I, ROBERT F. PERKINS, in a field survey on 10-24, 1996, do hereby certify that under requirements of P.A. 74, Michigan P.A. of 1970, the corner points mentioned in lines 1 and 2 above were in conformance with regulations and rules therefore as required in the current manual of survey instructions of the United States Department of the Interior, Bureau of Land Management or by a decree of a Court of Law and/or that the corner points mentioned in lines 3, 4 and 5 above were in conformance with the rules of the Michigan Board of Professional Surveyors or by a Decree of a Court of Law; established, re-established, monumented, re-monumented, recovered, found as expressed below:



NOTE: Not more than 4 corners, all in the same town and range, may be recorded on this certificate.

A. Description of original monument and accessories and/or subsequent restoration:

- 1-4 1/4 CORNER COMMON TO SECTIONS 10/11 POST BY J. H. MULLETT, D.S. 1849 ORIGINAL BEARING TREES CEDAR 10" S80°W 15 L. CEDAR 10" S41°E 37 L.
1-5 SECTION CORNER COMMON TO SECTIONS 14-15-22-23 POST BY J. H. MULLETT, D.S. 1849 TAMARACK 10" N45°E 15 L. TAMARACK 10" S55°W 15 L.

B. Description of corner evidence found and/or method applied in restoring or reestablishing corner:

- 1-4 FOUND 1" IRON PIPE WITH 4" D.N.R. BRASS CAP SET FROM GOV'T. BEARING TREE BY D.C. DeLAMATER IN 1953 (FILED ON SHEET #16). 1953 BEARING TREES TAMARACK 5" N06°W 21 L. TAMARACK 5" S67°E 3 L.
1-5 FOUND 1" IRON PIPE WITH 4" K.C. CORP. CAP SET IN 1963 BY N. SPERHAKE. 1963 BEARING TREES W. BIRCH 8" N20°E 4.2' CENTERLINE W. BIRCH 7" N74°E 30.5 ASPEN 12" DOWN PROBABLE REMAINS OF GLO TAMARACK BT'S (DECAYED STUMPS)

ACCEPTED BY THE DICKINSON COUNTY SURVEY PEER GROUP AS THE OFFICIAL CORNER UNDER MICHIGAN PUBLIC ACT 346 OF 1990 AT A MEETING HELD ON 12-17-96

COUNTY REPRESENTATIVE

C. Description of monument for corner and accessories established to perpetuate locating the position of the corner:

- 1-4 FOUND ABOVE DESCRIBED MONUMENT IN PLACE. NEW BEARING TREES: BLK. SPRUCE 6" N45°W (M.B.) 7.22 EX. NAIL TAMARACK 8" NORTH (M.B.) 18.4' NAIL/TAG TAMARACK 8" S85°E (M.B.) 10.4' NAIL/TAG CEDAR 10" S40°W (M.B.) 24.15' NAIL/TAG PLACED CARSONITE MARKER 1.0' NORTH OF CORNER.
1-5 FOUND ABOVE DESCRIBED MONUMENT IN PLACE. NEW BEARING TREES: BLK. ASH 5" N51°E (M.B.) 29.70' NAIL/TAG BLK. ASH 6" S12°E (M.B.) 17.87' NAIL/TAG BLK. SPRUCE 6" N72°E (M.B.) 39.40' NAIL/TAG BLK. SPRUCE 7" S45°W (M.B.) 47.10' NAIL/TAG SET CARSONITE MARKER 1.0' SOUTH OF CORNER.

Signed by [Signature] Surveyor's Michigan License No. 12027

Date NOVEMBER 6, 1996

