

MAY 07 1997

RECORDED

COMMISSION

LAND CORNER RECORDATION CERTIFICATE 1996 DEC 18 AM 11:17  
Filing Requirement of Act 74, Mich. P.A. 1970

For corners in

DICKINSON

(County)

Located In:

Corner Code #

WAUCEDAHA TWP.

- 1. Public Land Survey T 40N R 28W
- T \_\_\_\_\_ R \_\_\_\_\_
- T \_\_\_\_\_ R \_\_\_\_\_
- T \_\_\_\_\_ R \_\_\_\_\_
- 2. Property Controlling S \_\_\_\_\_ T \_\_\_\_\_ R \_\_\_\_\_
- in Section S \_\_\_\_\_ T \_\_\_\_\_ R \_\_\_\_\_
- 3. Miscellaneous S \_\_\_\_\_ T \_\_\_\_\_ R \_\_\_\_\_
- Property in Section S \_\_\_\_\_ T \_\_\_\_\_ R \_\_\_\_\_

1-6  
J-3

\_\_\_\_\_

\_\_\_\_\_

\_\_\_\_\_

\_\_\_\_\_

\_\_\_\_\_

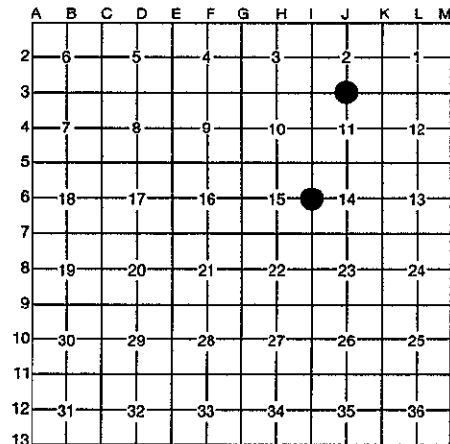
REGISTER OF DEEDS  
DICKINSON COUNTY  
IRON MOUNTAIN, MICH. 49801

8

Register of Deeds Stamp & File Number

- 4. Lot No. \_\_\_\_\_, Recorded Plat \_\_\_\_\_
- 5. Private Claims \_\_\_\_\_

I, ROBERT F. PERKINS, in a field survey on 10-10, 19 96, do hereby certify that under requirements of P.A. 74, Michigan P.A. of 1970, the corner points mentioned in lines 1 and 2 above were in conformance with regulations and rules therefore as required in the current manual of survey instructions of the United States Department of the Interior, Bureau of Land Management or by a decree of a Court of Law and/or that the corner points mentioned in lines 3, 4 and 5 above were in conformance with the rules of the Michigan Board of Professional Surveyors or by a Decree of a Court of Law; established, re-established, monumented, re-monumented, recovered, found as expressed below:



NOTE: Not more than 4 corners, all in the same town and range, may be recorded on this certificate.

A. Description of original monument and accessories and/or subsequent restoration:

1-6 1/4 CORNER COMMON TO SECTIONS 15 & 14  
POST BY JAMES MULLETT, D.S. 1849  
ORIGINAL BEARING TREES  
CEDAR 12" N12°E 09 L.  
SUGAR 8" N89°W 16 L.

J-3 1/4 CORNER COMMON TO SECTION 2/11  
POST BY JAMES MULLETT, D.S. 1849  
ORIGINAL BEARING TREES  
FIR 8" S70°W 21 L.  
FIR 6" S50°E 18 L.

B. Description of corner evidence found and/or method applied in restoring or reestablishing corner:

1-6 NO EVIDENCE OF ORIGINAL CORNER OR ACCESSORIES FOUND.  
FOUND 2" IRON PIPE 2643' SOUTH OF SECTION CORNER TO NORTH. LOCATION AGREES WITH RIVER TO NORTH. CORNER HAS BEEN IN OVER 30 YEARS AND HAS BEEN ACCEPTED ON NUMEROUS SURVEYS.

J-3 NO EVIDENCE OF ORIGINAL CORNER OR ACCESSORIES FOUND.  
FOUND 1" IRON PIPE AT SOUTH END OF OLD FENCE (DOWN) RUNNING NORTH. LOCATION AGREES WITH GLO DISTANCE TO RIVER BANK.

ACCEPTED BY THE DICKINSON COUNTY SURVEY PLAN GROUP AS THE OFFICIAL CORNER UNDER MICHIGAN PUBLIC ACT 345 OF 1980 AT A MEETING HELD ON 12-17-96  
ROF  
COUNTY REPRESENTATIVE

C. Description of monument for corner and accessories established to perpetuate locating the position of the corner:

1-6 ACCEPTED ABOVE DESCRIBED IRON PIPE AS BEST AVAILABLE EVIDENCE OF CORNER LOCATION.  
PLACED 2 1/2" D.C. REMON. STAMPED MONUMENT IN PIPE.  
NEW BEARING TREES:  
CEDAR 14" N10°W (M.B.) 65.14' NAIL/TAG  
CEDAR 10" N43°W (M.B.) 72.90' NAIL/TAG  
CEDAR 8" S68°W (M.B.) 32.62' NAIL/TAG  
SPRUCE 10" S60°E (M.B.) 5.59' NAIL/TAG  
PLACED CARSONITE MARKER 1' EAST.

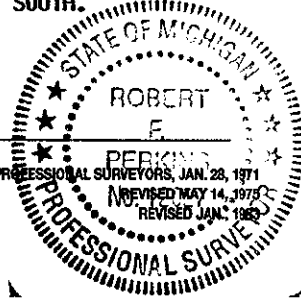
J-3 ACCEPTED ABOVE DESCRIBED IRON PIPE AS BEST AVAILABLE EVIDENCE OF CORNER LOCATION.  
PLACED 2 1/2" D.C. REMON. STAMPED MONUMENT AT PIPE.  
NEW BEARING TREES:  
6" BLACK SPRUCE S50°E (M.B.) 35.53' NAIL/TAG  
4" W. PINE N36°E (M.B.) 11.53' NAIL/TAG  
6" FIR S85°W (M.B.) 42.10' NAIL/TAG  
3" FIR N62°W (M.B.) 47.72' NAIL/TAG  
RIVER BANK ± 10' SOUTH.  
PLACED CARSONITE MARKER 1.0' SOUTH.

Signed by Robert F. Perkins

Date NOVEMBER 6, 1996

Surveyor's Michigan License No. 12027

FORM APPROVED BY MICHIGAN STATE BOARD OF PROFESSIONAL SURVEYORS, JAN. 28, 1971  
REVISED MAY 14, 1979  
REVISED JAN. 1983



Libers 2 Page 281