

MAY 07 1997

RECORDED

COMMISSION

LAND CORNER RECORDATION CERTIFICATE
Filing Requirement of Act 74, Mich. P.A. 1970

1996 DEC 18 AM 11:17

For corners in

DICKINSON

(County)

Located In:

Corner Code #

WAUCEDAHA TWP.

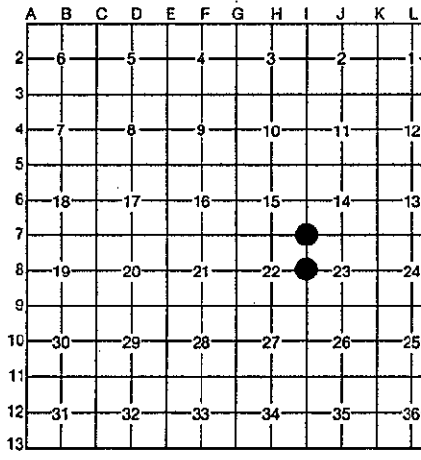
1. Public Land Survey	T	40N	R	28W	1-7
	T		R		1-8
	T		R		
	T		R		
2. Property Controlling in Section	S		T		
	S		T		
3. Miscellaneous Property in Section	S		T		
	S		T		

REGISTER OF DEEDS
DICKINSON COUNTY
RON MOUNTAIN, M.I. 49901

10

Register of Deeds Stamp & File Number

- 4. Lot No. _____, Recorded Plat _____
- 5. Private Claims _____



I, ROBERT F. PERKINS, in a field survey on 10-23, 1996, do hereby certify that under requirements of P.A. 74, Michigan P.A. of 1970, the corner points mentioned in lines 1 and 2 above were in conformance with regulations and rules therefore as required in the current manual of survey instructions of the United States Department of the Interior, Bureau of Land Management or by a decree of a Court of Law and/or that the corner points mentioned in lines 3, 4 and 5 above were in conformance with the rules of the Michigan Board of Professional Surveyors or by a Decree of a Court of Law; established, re-established, monumented, re-monumented, recovered, found as expressed below:

NOTE: Not more than 4 corners, all in the same town and range, may be recorded on this certificate.

A. Description of original monument and accessories and/or subsequent restoration:

1-7 CORNER COMMON TO SECTIONS 14-15-22-23
POST BY J. H. MULLETT, D.S. 1849
ORIGINAL BEARING TREES
W. PINE 18" N11°W 30 L.
W. PINE 18" N58°E 42 L.

1-8 1/4 CORNER COMMON TO SECTIONS 22 & 23
POST BY J. H. MULLETT, D.S. 1849
ORIGINAL BEARING TREES
HEMLOCK 10" N70°E 60 L.
B. ASH 10" S83°W 13 L.

B. Description of corner evidence found and/or method applied in restoring or reestablishing corner:

1-7 FOUND 1" IRON PIPE WITH 4" D.N.R. CAP SET BY D. C. DeLaMATER FROM 2 ORIGINAL BEARING TREES in 1954 (FILE #9).
1954 BEARING TREES
CEDAR 9" N60°E 36 L. (FOUND)
SPRUCE 8" S36°W 18 L.

1-8 FOUND 1" IRON PIPE WITH 4" D.N.R. CAP SET BY D.C. DeLaMATER BY PROPORTIONATE MEASURE IN 1954.
1954 BEARING TREES
TAMARACK N4°E 60 L. (LOST)
SPRUCE 10" S70°W 30 L. (LOST)

ACCEPTED BY THE DICKINSON COUNTY SURVEY PLEAS GROUP AS THE OFFICIAL CORNER UNDER MICHIGAN PUBLIC ACT 345 OF 1960 AT A MEETING HELD ON 12-17-96
ROF
COUNTY REPRESENTATIVE

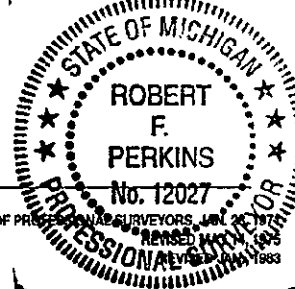
C. Description of monument for corner and accessories established to perpetuate locating the position of the corner:

1-7 FOUND ABOVE DESCRIBED MONUMENT IN PLACE.
NEW WITNESSES:
CEDAR 7" N27°E (M.B.) 27.42' NAIL/TAG
CEDAR 12" N63°E (M.B.) 23.07' (FOUND)
CEDAR 16" S50°E (M.B.) 81.5" NAIL/TAG
+ CUT ON ROCK O.C. S80°W (M.B.) 87.50'
PLACED CARSONITE MARKER 1.0' WEST OF CORNER.

1-8 FOUND ABOVE DESCRIBED MONUMENT IN PLACE.
NEW BEARING TREES:
SPRUCE 14" N28°E (M.B.) 28.2' NAIL/TAG
SPRUCE 10" EAST 37.25' NAIL/TAG
SPRUCE 6" N27°W (M.B.) 40.4' NAIL/TAG
B. ASH 8" N75°W (M.B.) 8.0' NAIL/TAG
SET CARSONITE MARKER 1.0' NORTH OF CORNER.

Signed by Robert F. Perkins
Surveyor's Michigan License No. 12027

Date NOVEMBER 6, 1996



FORM APPROVED BY MICHIGAN STATE BOARD OF PROFESSIONAL SURVEYORS, JAN 2 1997