

SURVEY & REMONUMENTATION

MAR 03 1998

LAND CORNER RECORDATION CERTIFICATE  
Filing Requirement of Act 74, Mich. P.A. 1970

RECORDED  
1997 DEC 12 PM 1:36

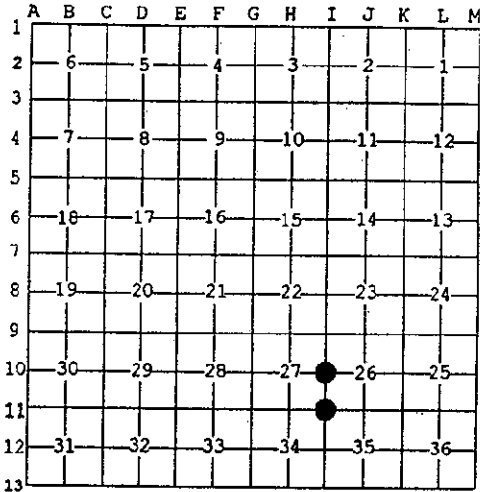
For corners in SECTION

Dickinson (County)	Located in:	Corner Code #
Waucedah Township		
1. Public Land Survey	T40N R 28W	I-10
	T___ R___	I-11
	T___ R___	
	T___ R___	
2. Property Controlling in Section	S___ T___ R___	
	S___ T___ R___	
3. Miscellaneous Property in Sec.	S___ T___ R___	
	S___ T___ R___	

REGISTER OF DEEDS  
DICKINSON COUNTY  
RON MOORE, CLERK

Register of Deeds Stamp & File Number

4. Lot No. \_\_\_\_\_, Recorded Plat \_\_\_\_\_  
5. Private Claims \_\_\_\_\_



I, James H. Moore, in a field survey on October 14, 19 97 do hereby state that under requirements of P.A. 74, Michigan P.A. of 1970, the corner points mentioned in lines 1 and 2 above were in conformance with regulations and rules therefore as required in the current manual of survey instructions of the United States Department of the Interior, Bureau of Land Management or by a decree of a Court of Law and /or that the corner points mentioned in lines 3, 4 and 5 above were in conformance with the rules of the Michigan Board of Land Surveyors or by a Decree of a Court of Law; established, re-established, monumented, recovered, found as expressed below:

NOTE: Not more than 2 corners, all in the same town and range, may be recorded on this certificate.

A. Description of original monument and accessories and/or subsequent restoration:

I-10 - 1/4 corner common to Sections 26 and 27  
Post by James H. Mullett, D.S. 1849

Cedar 10" N38°W 07 L.  
Fir 6" S28°E 10 L.

I-11 - corner common to Sections 26, 27, 34 and 35  
Post by James H. Mullett, D.S. 1849

Hemlock 24" N30°E 24 L.  
Sugar 12" S55°W 14 L.

ACCEPTED BY THE DICKINSON COUNTY SURVEY PEER GROUP AS THE OFFICIAL CORNER UNDER MICHIGAN PUBLIC ACT 345 OF 1990 AT A MEETING HELD ON 12-9-97

B. Description of corner evidence found and/or method applied in restoring or reestablishing corner:

I-10 - found 1" pipe with 4" DNR brass cap set by proportionate measure in 1955 by B. Buckler (old #4) 1955 bearing trees:

Tamarack 9" S67°W 32 L.  
Aspen 14" S31°W 117 L.

I-11 - found 1" pipe with 4" DNR brass cap set by B. Buckler in 1955 from accepted found evidence (old #3) 1955 bearing trees:

S. Maple 15" S03°W 124 L.  
B. Cherry 8" N17°E 79 L.

R.M.P.  
COUNTY REPRESENTATIVE

C. Description of monument for corner and accessories established to perpetuate locating the position of the corner:

I-10 - found above described monument in place  
New Witnesses:

Aspen 9" S11°W (M.B.) 28.26' nail/tag  
Tamarack \*13" S72°W (M.B.) 21.80' nail/tag  
Tamarack 5" N68°E (M.B.) 39.38' nail/tag  
Tamarack 11" S59°E (M.B.) 11.00' nail/tag

I-11 - found above described monument in place  
New Witnesses:

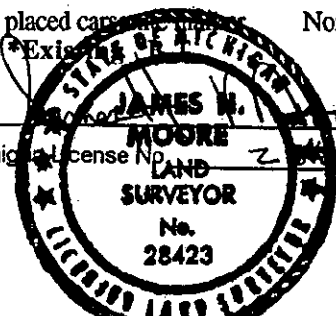
Spruce 3" N73°E (M.B.) 5.62' nail/tag  
Ash 5" S86°W (M.B.) 17.14' nail/tag  
Ash 5" S25°E (M.B.) 16.60' nail/tag  
Cherry 6" S15°W (M.B.) 51.58' nail/tag

placed carsonite marker North 0.86'

placed carsonite marker West 1.0'

Signed by JAMES H. MOORE  
Surveyor's Michigan License No. 28423

Date 12-8-97



LIBER 002 PAGE 340