

SURVEY & REMONUMENTATION

MAR 03 1998

LAND CORNER RECORDATION CERTIFICATE
Filing Requirement of Act 74, Mich. P.A. 1970

RECORDED
1997 DEC 12 PM 1:36

For corners in SECTION

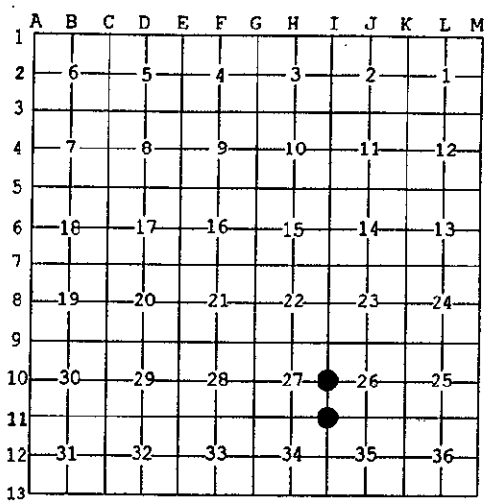
<u>Dickinson</u>	Located In:	Corner Code #
(County)		
Waucedah Township		
1. Public Land Survey	T40N R 28W	I-10
	T R	I-11
	T R	
	T R	
2. Property Controlling in Section	S T R	
	S T R	
3. Miscellaneous Property in Sec.	S T R	
	S T R	

REGISTER OF DEEDS
DICKINSON COUNTY
RON MOORE COUNTY CLERK

Register of Deeds Stamp & File Number

4. Lot No. _____, Recorded Plat _____
5. Private Claims _____

I, James H. Moore, in a field survey on October 14, 1997 do hereby state that under requirements of P.A. 74, Michigan P.A. of 1970, the corner points mentioned in lines 1 and 2 above were in conformance with regulations and rules therefore as required in the current manual of survey instructions of the United States Department of the Interior, Bureau of Land Management or by a decree of a Court of Law and /or that the corner points mentioned in lines 3, 4 and 5 above were in conformance with the rules of the Michigan Board of Land Surveyors or by a Decree of a Court of Law; established, re-established, monumented, recovered, found as expressed below:



NOTE: Not more than 2 corners, all in the same town and range, may be recorded on this certificate.

A. Description of original monument and accessories and/or subsequent restoration:

- | | |
|--|--|
| <u>I-10</u> - 1/4 corner common to Sections 26 and 27
Post by James H. Mullett, D.S. 1849 | <u>I-11</u> - corner common to Sections 26, 27, 34 and 35
Post by James H. Mullett, D.S. 1849 |
| Cedar 10" N38°W 07 L.
Fir 6" S28°E 10 L. | Hemlock 24" N30°E 24 L.
Sugar 12" S55°W 14 L. |

ACCEPTED BY THE DICKINSON COUNTY SURVEY PEER GROUP AS THE OFFICIAL CORNER UNDER MICHIGAN PUBLIC ACT 346 OF 1990 AT A MEETING HELD ON 12-9-97
R.A.P.
COUNTY REPRESENTATIVE

B. Description of corner evidence found and/or method applied in restoring or reestablishing corner:

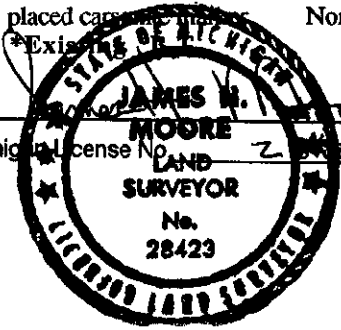
- | | |
|---|---|
| <u>I-10</u> - found 1" pipe with 4" DNR brass cap set by proportionate measure in 1955 by B. Buckler (old #4) 1955 bearing trees: | <u>I-11</u> - found 1" pipe with 4" DNR brass cap set by B. Buckler in 1955 from accepted found evidence (old #3) 1955 bearing trees: |
| Tamarack 9" S67°W 32 L.
Aspen 14" S31°W 117 L. | S. Maple 15" S03°W 124 L.
B. Cherry 8" N17°E 79 L. |

C. Description of monument for corner and accessories established to perpetuate locating the position of the corner:

- | | |
|--|---|
| <u>I-10</u> - found above described monument in place
New Witnesses: | <u>I-11</u> - found above described monument in place
New Witnesses: |
| Aspen 9" S11°W (M.B.) 28.26' nail/tag
Tamarack *13" S72°W (M.B.) 21.80' nail/tag
Tamarack 5" N68°E (M.B.) 39.38' nail/tag
Tamarack 11" S59°E (M.B.) 11.00' nail/tag | Spruce 3" N73°E (M.B.) 5.62' nail/tag
Ash 5" S86°W (M.B.) 17.14' nail/tag
Ash 5" S25°E (M.B.) 16.60' nail/tag
Cherry 6" S15°W (M.B.) 51.58' nail/tag |

placed cap on _____ North 0.86' placed carsonite marker West 1.0'

Signed by _____
Surveyor's Michigan License No. 28423



Date 12-8-97

LIBER 002 PAGE 340