

MAY 07 1997

COMMISSION

LAND CORNER RECORDATION CERTIFICATE  
Filing Requirement of Act 74, Mich. P.A. 1970

RECORDED

1996 DEC 18 AM 11:17

For corners in  
DICKINSON

(County)

Located In:

Corner Code #

WAUCEDAHP TWP.

- 1. Public Land Survey T 40N R 28W
- T \_\_\_\_\_ R \_\_\_\_\_
- T \_\_\_\_\_ R \_\_\_\_\_
- T \_\_\_\_\_ R \_\_\_\_\_
- 2. Property Controlling S \_\_\_\_\_ T \_\_\_\_\_ R \_\_\_\_\_
- in Section S \_\_\_\_\_ T \_\_\_\_\_ R \_\_\_\_\_
- 3. Miscellaneous S \_\_\_\_\_ T \_\_\_\_\_ R \_\_\_\_\_
- Property in Section S \_\_\_\_\_ T \_\_\_\_\_ R \_\_\_\_\_

J-7  
1-2

---

---

---

---

---

---

---

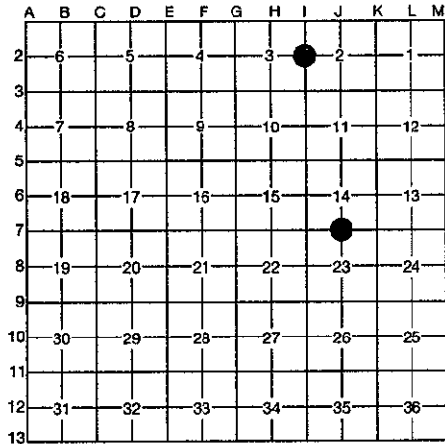
---

REGISTER OF DEEDS  
DICKINSON COUNTY  
IRON MOUNTAIN, MICH. 49801

17

Register of Deeds Stamp & File Number

- 4. Lot No. \_\_\_\_\_, Recorded Plat \_\_\_\_\_
- 5. Private Claims \_\_\_\_\_



I, ROBERT F. PERKINS, in a field survey on 10-10, 1996, do hereby certify that under requirements of P.A. 74, Michigan P.A. of 1970, the corner points mentioned in lines 1 and 2 above were in conformance with regulations and rules therefore as required in the current manual of survey instructions of the United States Department of the Interior, Bureau of Land Management or by a decree of a Court of Law and/or that the corner points mentioned in lines 3, 4 and 5 above were in conformance with the rules of the Michigan Board of Professional Surveyors or by a Decree of a Court of Law; established, re-established, monumented, re-monumented, recovered, found as expressed below:

NOTE: Not more than 4 corners, all in the same town and range, may be recorded on this certificate.

A. Description of original monument and accessories and/or subsequent restoration:

J-7 <sup>14</sup>  
1/4 CORNER COMMON TO SECTION 23  
POST BY J. H. MULLETT, D.S. 1849  
ORIGINAL BEARING TREES  
SUGAR 14" N38°E 06 L.  
SUGAR 12" S12°E 23 L.

1-2 1/4 CORNER COMMON TO SECTIONS 3/2  
POST BY J. H. MULLETT, D.S. 1849  
ORIGINAL BEARING TREES  
SUGAR 12" S55°W 05 L.  
BIRCH 8" N80°E 30 L.  
RECORDED BY THE DICKINSON COUNTY  
SURVEY PEER GROUP AS THE OFFICIAL  
CORNER UNDER MICHIGAN PUBLIC ACT  
345 OF 1990 AT A MEETING HELD ON  
12-17-96  
RFP  
COUNTY REPRESENTATIVE

B. Description of corner evidence found and/or method applied in restoring or reestablishing corner:

J-7 NO EVIDENCE OF ORIGINAL CORNER OR ACCESSORIES FOUND.  
FOUND 1 1/2" SOLID IRON BAR & REMAINS OF SCRIBED WOOD POST (DOWN).  
M.J. BACCO WITNESS 28" PINE STUMP S83°E 38.1' TO BLAZE (1913).  
NEW BEARING TREE (FOUND)  
FIR 11" N18 1/2°W 47.0'

1-2 NO EVIDENCE OF ORIGINAL CORNER OR ACCESSORIES FOUND.  
FOUND 1 1/2" SOLID IRON BAR BURIED IN CENTER OF COUNTY ROAD AT ANCIENT FENCE LINES RUNNING NORTH AND SOUTH FROM CORNER.  
CORNER REFERRED TO IN D.C.R.COMM. NOTES FOR SURVEY OF BRIDGE ROAD. (Circa 1935)

C. Description of monument for corner and accessories established to perpetuate locating the position of the corner:

J-7 ACCEPTED ABOVE DESCRIBED IRON BAR AS BEST AVAILABLE EVIDENCE OF CORNER LOCATION.  
SET 2 1/2" D.C. REMON. STAMPED MONUMENT AT IRON BAR.  
NEW BEARING TREES:  
FIR 4" N31°E (M.B.) 6.92' NAIL/TAG  
FIR 10" S30°E (M.B.) 24.20' NAIL/TAG  
FIR 8" S39°W (M.B.) 26.51' NAIL/TAG  
FIR 10" N17°W (M.B.) 47.0' NAIL/TAG  
PLACED CARSONITE MARKER 1.0' S.E. OF CORNER.

1-2 ACCEPTED ABOVE IRON BAR FOR CORNER.  
SET 3 1/2" STAMPED D.C. REMON. WITNESS CORNER 33.0' SOUTH IN FENCE LINE.  
NEW BEARING TREES:  
IRONWOOD 6" S41°W (M.B.) 31.25' NAIL/TAG  
MAPLE 6" S41°E (M.B.) 24.32' NAIL/TAG  
DBL. MAPLE 6" N41°E (M.B.) 26.95' NAIL/TAG  
MAPLE 10" N38°W (M.B.) 46.28' NAIL/TAG.  
PLACED CARSONITE MARKER 1.0' SOUTH OF W.C.

Signed by Robert F. Perkins

Date NOVEMBER 6, 1996

Surveyor's Michigan License No. 12027

FORM APPROVED BY MICHIGAN STATE BOARD OF PROFESSIONAL SURVEYORS, MAY 28, 1971  
REVISION MAY 14, 1976  
REVISED JAN. 1988

