

**SURVEY & BEMONUMENTATION**

MAR 03 1998

RECORDED

1997 DEC 12 PM 1:37

**SECTION**

**LAND CORNER RECORDATION CERTIFICATE**  
Filing Requirement of Act 74, Mich. P.A. 1970

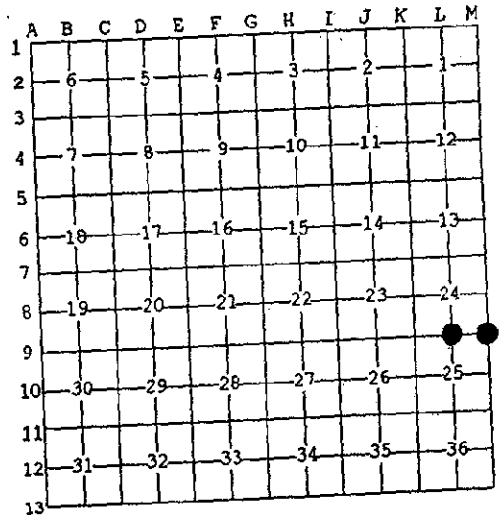
For corners in

<u>Dickinson</u> (County)	Located In:	Corner Code #
<u>Wauccedah Township</u>	T40N R28W	<u>L-9</u>
1. Public Land Survey	T___ R___	M-9
	T___ R___	
	T___ R___	
2. Property Controlling in Section	S___ T___ R___	
	S___ T___ R___	
3. Miscellaneous Property in Sec.	S___ T___ R___	
	S___ T___ R___	

REGISTER OF DEEDS  
DICKINSON COUNTY  
RON MOORE, COUNTY CLERK

Register of Deeds Stamp & File Number

4. Lot No. \_\_\_\_\_ Recorded Plat \_\_\_\_\_  
5. Private Claims \_\_\_\_\_



I, James H. Moore, in a field survey on September 23, 1997 do hereby state that under requirements of P.A. 74, Michigan P.A. of 1970, the corner points mentioned in lines 1 and 2 above were in conformance with regulations and rules therefore as required in the current manual of survey instructions of the United States Department of the Interior, Bureau of Land Management or by a decree of a Court of Law and/or that the corner points mentioned in lines 3, 4 and 5 above were in conformance with the rules of the Michigan Board of Land Surveyors or by a Decree of a Court of Law, established, re-established, monumented, recovered, found as expressed below:

NOTE: Not more than 2 corners, all in the same town and range, may be recorded on this certificate.

**A. Description of original monument and accessories and/or subsequent restoration:**

- L-9 - 1/4 corner common to Sections 24 and 25  
Post by James H. Mullett, D.S. 1849
- M-9 - corner common to Sections 24 and 25,  
T40N-R28W and Section 19 and 30, T40N-R27W  
Post by James H. Mullett, D.S. 1849

Cedar 14" S55°W 04 L.  
Fir 10" N88°E 16 L.

Lynn 15"  
Sugar 12"

ACCEPTED BY THE DICKINSON COUNTY  
SURVEY PARTY GROUP AS THE OFFICIAL  
CORNER UNDER MICHIGAN PUBLIC ACT  
345 OF 1960 AT A MEETING HELD ON  
12-9-97

ROP  
COUNTY REPRESENTATIVE

**B. Description of corner evidence found and/or method applied in restoring or reestablishing corner:**

- L-9 - found 1" pipe with 4" K.C. Corp.  
cap set by proportionate measure  
in 1966 by E. Kazianka (old #1025)  
1966 bearing trees:

Cedar 7" N44°E 21-1/2 L.  
Cedar 5" S23°W 14 L.

- M-9 - found 4" pipe DNR cap on 3" x 3" post  
(originally a 1" pipe) set by proportionate  
measure in 1959 by B. Buckler (old #331)  
1959 bearing trees:

S. Maple 5" N11°E 11 L.  
B. Cherry 8" S72°E 70 L.  
W. Birch 7" S78°W 44-1/2 L.

**C. Description of monument for corner and accessories established to perpetuate locating the position of the corner:**

- L-9 - found above described monument in place  
New Witnesses:

Aspen 18" S72°W (M.B.) 5.15' nail/tag  
Cedar 7" N18°W (M.B.) 19.90' nail/tag  
Cedar \*8" S18°W (M.B.) 9.12' nail/tag  
Cedar \*11" N48°E (M.B.) 14.11' nail/tag

- M-9 - found above described monument in correct location  
as verified from existing bearing trees  
New Witnesses:

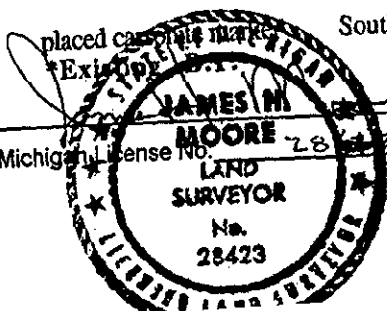
S. Maple \*12" N25°E (M.B.) 7.42' nail/tag  
Balsam 6" S04°E (M.B.) 6.58' nail/tag  
W. Birch \*14" S83°W (M.B.) 28.83' nail/tag  
Maple 6" N46°W (M.B.) 47.52' nail/tag

placed carsonite marker South 1.3'

placed carsonite marker South 1.2'  
this corner is also A-9 of T40N-R27W

Signed by \_\_\_\_\_

Surveyor's Michigan License No. \_\_\_\_\_



Date 12-8-97