

LAND CORNER RECORDATION CERTIFICATE
Filing Requirement of Act 74, Mich. P.A. 1970

For corners in
Dickinson

(County)

Located in:

Corner Code ##

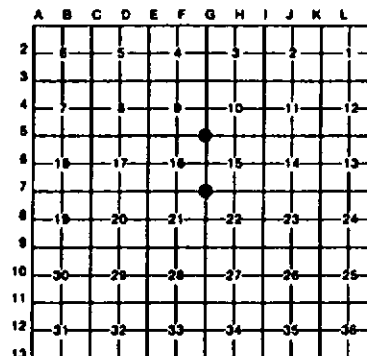
1. Public Land Survey	T	<u>40N</u>	R	<u>20W</u>	<u>65</u>	
	T	<u>40N</u>	R	<u>20W</u>	<u>67</u>	
	T	_____	R	_____	_____	
	T	_____	R	_____	_____	
2. Property Controlling In Section	S	_____	T	_____	R	_____
	S	_____	T	_____	R	_____
3. Miscellaneous Property in Sec.	S	_____	T	_____	R	_____
	S	_____	T	_____	R	_____

Register of Deeds Stamp & File Number

4. Lot No. _____, Recorded Plat _____
 5. Private Claims _____

I, Stephan J. Szyszkoski, in a field survey on July 28, 1994, 19_____, do hereby certify that under requirements of P.A. 74, Michigan P.A. of 1970, the corner points mentioned in lines 1 and 2 above were in conformance with regulations and rules theretofore as required in the current manual of survey instructions of the United States Department of the Interior, Bureau of Land Management or by a decree of a Court of Law and/or that the corner points mentioned in lines 3, 4 and 5 above were in conformance with the rules of the Michigan Board of Land Surveyors or by a Decree of a Court of Law; established, re-established, monumented, re-monumented, recovered, found as expressed below:

NOTE: Not more than 4 corners, all in the same town and range, may be recorded on this certificate.



A. Description of original monument and accessories and/or subsequent restoration:

(65) Section corner common to Sections 9-10-15-16. Corner recorded in 1956 by Billy D. Buckler, RLS: 1" pipe with 4" brass cap set. 10" Elm N70W 50 links, Fence corner South 27 links. Found no subsequent record.

(67) Section corner common to Sections 15-16-21-22. Corner re-monumented in 1955 by Billy D. Buckler, RLS: placed 1" pipe with 4" brass Michigan Dept. of Conservation cap from White Pine 8T. 8" soft Maple S16E 40 links, 10" Aspen N9E 36 links. Found no subsequent record.

B. Description of corner evidence found and/or method applied in restoring or reestablishing corner:

(65) Found the 1955 monument as described, in good condition. The 1956 witnesses were not recovered. The 3" iron pipe noted on the 1956 record is still in place adjacent to the corner. Marked 4 new witnesses as described below.

(67) Found the 1955 monument knocked over. Recovered the old hole and replaced the monument in it, and at proper bearing and distance from the remaining 1955 NBT - 14" Maple southeast, found in good condition. Marked three new witnesses as shown below.

C. Description of monument for corner and accessories established to perpetuate locating the position of the corner:

(65) Found 1" pipe with 4" brass cap. Blazed and scribed the following new bearing trees:

8" Balsam S13W 40.9' "S16 NBT"
 6" Spruce S63E 25.0' "S15 NBT"
 3" Balsam N46E 20.7' "S10 NBT"
 5" Ironwood N48W 48.1' "S9 NBT"
 Bearings are magnetic.

(67) Reset 1" iron pipe with 4" brass cap. Blazed and scribed the following new bearing trees:

14" Maple S58W 5.0' "S21 NBT"
 4" Balsam N16N 9.7' "S16 NBT"
 4" Balsam S76E 7.2' "S22 NBT"
 Bearings are magnetic.



Signed by

Stephan J. Szyszkoski

Date

9-21-94

Surveyor's Michigan License No.

33986