

LAND CORNER RECORDATION CERTIFICATE
Filing Requirement of Act 74, Mich. P.A. 1970

RECORDED

1998 DEC 14 PM 12:25

For corners in

<u>Dickinson</u>	Located In:	Corner Code #
(County)		
Norway Twp.		
1. Public Land Survey	T 40NR 29W	K-3
	T R	B-5
	T R	
	T R	
2. Property Controlling in Section	S T R	
	S T R	
3. Miscellaneous Property in Sec.	S T R	
	S T R	

REGISTER OF DEEDS
 DICKINSON COUNTY
 RON BRAY, REGISTER

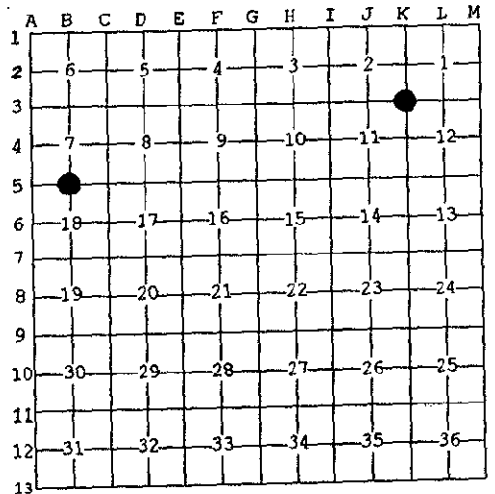
Register of Deeds Stamp & File Number

MAY 3 6 1999

4. Lot No. _____, Recorded Plat _____
 5. Private Claims _____

SECTION

I, Robert F. Perkins, in a field survey on Sept. 24, 1998 do hereby state that under requirements of P.A. 74, Michigan P.A. of 1970, the corner points mentioned in lines 1 and 2 above were in conformance with regulations and rules therefore as required in the current manual of survey instructions of the United States Department of the Interior, Bureau of Land Management or by a decree of a Court of Law and /or that the corner points mentioned in lines 3, 4 and 5 above were in conformance with the rules of the Michigan Board of Land Surveyors or by a Decree of a Court of Law; established, re-established, monumented, recovered, found as expressed below:



NOTE: Not more than 2 corners, all in the same town and range, may be recorded on this certificate.

A. Description of original monument and accessories and/or subsequent restoration:

K-3 Corner Common to Sections 1-2-11-12
 Post by James H. Mullett, D.S. 1849
 Original Bearing Trees
 Hemlock 12" N60°W 30 Lk.
 Hemlock 14" S24°E 9 Lk.

B-5 ⁷/₄ Corner Common to Sections 18
 Post by James H. Mullett, D.S. 1849
 Original Bearing Trees
 Hemlock 12" N60°W 30 Lk.
 Hemlock 14" S24°E 9 Lk.

B. Description of corner evidence found and/or method applied in restoring or reestablishing corner:

K-3 No Evidence of Original Corner or Accessories Found.
 Found 1 1/2" Iron Pipe.
 W.C. Johnson, C.E. Found & Witnessed same in 1935.
 Found 1935 Bearing Tree
 "Hemlock 9" N33°W 29.2"
 Corner Researched 11-19-97.

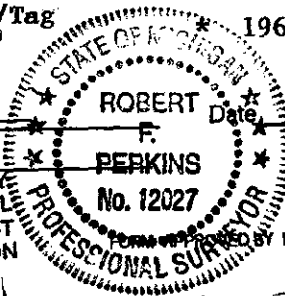
B-5 No Evidence of Original Corner or Accessories Found.
 Found 1" D.N.R. Pipe Monument set by Frank Bray, RLS 7-27-67.
 Witnesses:
 W.Pine 6" S64°W 76 Lk. (Found)
 Hemlock 20" N29°W 90 Lk. (Found)
 Old Corner Report #1045.

C. Description of monument for corner and accessories established to perpetuate locating the position of the corner:

K-3 Accepted Iron Pipe described in B above.
 Replaced same with 3 1/4" Stamped D.C. Remon. Corner.
 New Witnesses:
 Maple 6" N10°W(M.B.) 11.42' Nail/Tag
 Maple 6" S18°E(M.B.) 14.90' Nail/Tag
 Maple 8" N32°E(M.B.) 22.95' Nail/Tag
 Maple 12" S80°W(M.B.) 43.50' Nail/Tag
 Placed Carsonite Marker 1.0' South

B-5 Accepted Corner described in "B" above.
 New Witnesses:
 Maple 4" N22°E(M.B.) 3.92'
 Fir 4" S44°E(M.B.) 5.82'
 * Hemlock 24" N29°W(M.B.) 59.97' Nail/Tag
 * W.Pine 6" S64°W(M.B.) 50.65' Nail/Tag
 Set Carsonite Marker 1.0' South.
 1967 B.T.

Signed by Robert F. Perkins Date Oct. 28, 1998
 Surveyor's Michigan License No. 12027



ACCEPTED BY THE DICKINSON COUNTY SURVEY PEER GROUP AS THE OFFICIAL CORNER UNDER MICHIGAN PUBLIC ACT 345 OF 1990 AT A MEETING HELD ON 12-7-98

Lib 2 Page 415