

**SURVEY &
REMONUMENTATION**

MAR 03 1998

SECTION

LAND CORNER RECORDATION CERTIFICATE

Filing Requirement of Act 74, Mich. P.A. 1970

For corners in

Dickinson

(County)

Norway Twp.

Located In:

Corner Code #

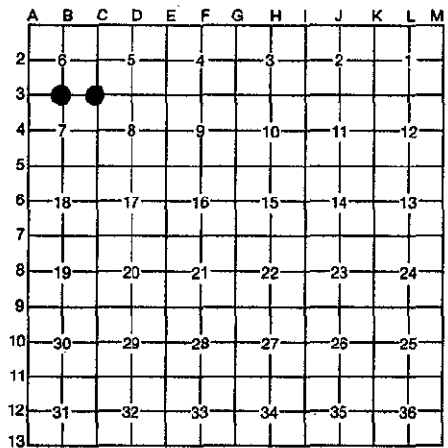
1. Public Land Survey	T	40N	R	29W	B-3
	T		R		C-3
	T		R		
	T		R		
2. Property Controlling in Section	S		T	R	
	S		T	R	
3. Miscellaneous Property in Section	S		T	R	
	S		T	R	

RECORDED
1997 DEC 10 PM 3:56

REGISTER OF DEEDS
DICKINSON COUNTY
NORWAY TWP.

Register of Deeds Stamp & File Number

4. Lot No. _____, Recorded Plat _____
5. Private Claims _____



I, Robert F. Perkins, in a field survey on Sept. 24, 19 97, do hereby certify that under requirements of P.A. 74, Michigan P.A. of 1970, the corner points mentioned in lines 1 and 2 above were in conformance with regulations and rules therefore as required in the current manual of survey instructions of the United States Department of the Interior, Bureau of Land Management or by a decree of a Court of Law and/or that the corner points mentioned in lines 3, 4 and 5 above were in conformance with the rules of the Michigan Board of Professional Surveyors or by a Decree of a Court of Law; established, re-established, monumented, re-monumented, recovered, found as expressed below:

NOTE: Not more than 4 corners, all in the same town and range, may be recorded on this certificate.

A. Description of original monument and accessories and/or subsequent restoration:

<p>B-3 $\frac{6}{7}$ Corner, Post by James H. Mullett, D.S. 1849 Original Bearing Trees Hemlock 12" S07°E 24 Lks. Ironwood 12" N28°E 8 Lks.</p>	<p>C-3 Corner Common to Sections 5-6-7-8 Post by James H. Mullett, D.S. 1849 Original Bearing Trees Lynn 14" S23°W 11 Lks. Hemlock 12" N33°E 11 Lks.</p>
----------------------------------------------------------------------------------------------------------------------------------------------------------------------------	--------------------------------------------------------------------------------------------------------------------------------------------------------------------------

HEADQUARTERS THE DICKINSON COUNTY
SURVEY PEER GROUP AS THE OFFICIAL
CORNER UNDER MICHIGAN PUBLIC ACT
345 OF 1990 AT A MEETING HELD ON
12-9-97
R.F.P.
COUNTY REPRESENTATIVE

B. Description of corner evidence found and/or method applied in restoring or reestablishing corner:

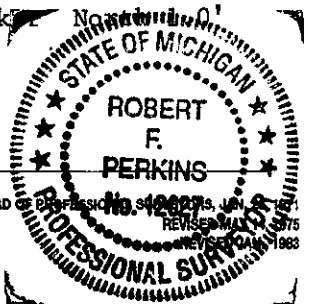
<p>B-3 No Evidence of Original Corner or Accessories Found. Found 1" Iron Pipe with 4" D.N.R. Brass Cap Set by D.C. DeLaMater, RLS in 1955. 1955 Witness: R.Oak 9" N18°E 60 Lks.</p>	<p>C-3 No Evidence of Original Corner or Accessories Found. Found 1" Iron Pipe with 4" D.N.R. Brass Cap Set by D.C. DeLaMater, RLS in 1955. 1955 Bearing Trees: W.Birch 6" S74°W 12 Lks. Maple 6" N51°E 31 Lks.</p>
--------------------------------------------------------------------------------------------------------------------------------------------------------------------------------------------------	-----------------------------------------------------------------------------------------------------------------------------------------------------------------------------------------------------------------------------------------

C. Description of monument for corner and accessories established to perpetuate locating the position of the corner:

<p>B-3 Found and Accepted above Described Pipe Monument. New Witnesses: Maple 3" (Clump) N47°E (M.B.) 21.59' Nail/Tag Db1. Maple 6" S16°W (M.B.) 7.70' Nail/Tag Ironwood 4" N15°W (M.B.) 35.55' Nail/Tag * Db1. Oak 18" N18°E (M.B.) 40.18' Nail/Tag Carsonite Marker East 1.0' * Existing 1955 B.T.</p>	<p>C-3 Found and Accepted above described Pipe Marker New Witnesses: Maple 10" N51°E (M.B.) 20.21' Nail/Tag Maple 3" N34°W (M.B.) 10.52' Nail/Tag Maple 3" S53°E (M.B.) 17.50' Nail/Tag Ironwood 6" S29°W (M.B.) 24.50' " Carsonite Marker North 1.0'</p>
--------------------------------------------------------------------------------------------------------------------------------------------------------------------------------------------------------------------------------------------------------------------------------------------------------------------------------------	-----------------------------------------------------------------------------------------------------------------------------------------------------------------------------------------------------------------------------------------------------------------------------------

Signed by Robert F. Perkins
Surveyor's Michigan License No. 12027

Date Nov. 19, 1997



FORM APPROVED BY MICHIGAN STATE BOARD OF PROFESSIONAL SURVEYORS, JAN 1, 1975, REVISED MAY 1, 1983