

DEC 18 1995

COMMISSION

LAND CORNER RECORDATION CERTIFICATE
Filing Requirement of Act 74, Mich. P.A. 1970

RECORDED

1995 NOV 21 AM 11:27

For corners in

Dickinson
(County)

Located In:

Corner Code #

- | | | | | | |
|--------------------------------------|---|------------|---|------------|-------------|
| 1. Public Land Survey | T | <u>40N</u> | R | <u>29W</u> | <u>C-11</u> |
| | T | | R | | <u>D-11</u> |
| | T | | R | | |
| | T | | R | | |
| 2. Property Controlling in Section | S | | T | R | |
| | S | | T | R | |
| 3. Miscellaneous Property in Section | S | | T | R | |
| | S | | T | R | |

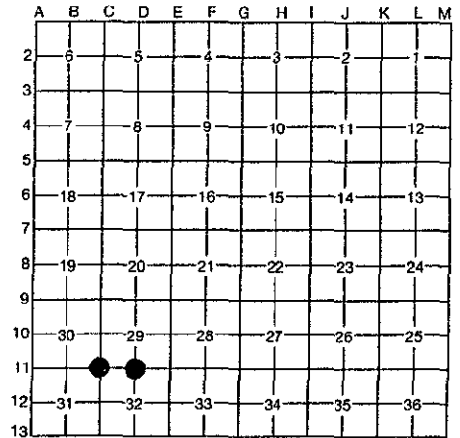
RECORDS DEEDS
COUNTY CLERK

Register of Deeds Stamp & File Number

4. Lot No. _____, Recorded Plat _____
5. Private Claims _____

I, Robert F. Perkins, in a field survey on Oct. 12, 1995, do hereby certify that under requirements of P.A. 74, Michigan P.A. of 1970, the corner points mentioned in lines 1 and 2 above were in conformance with regulations and rules therefore as required in the current manual of survey instructions of the United States Department of the Interior, Bureau of Land Management or by a decree of a Court of Law and/or that the corner points mentioned in lines 3, 4 and 5 above were in conformance with the rules of the Michigan Board of Professional Surveyors or by a Decree of a Court of Law; established, re-established, monumented, re-monumented, recovered, found as expressed below:

NOTE: Not more than 4 corners, all in the same town and range, may be recorded on this certificate.



A. Description of original monument and accessories and/or subsequent restoration:

C-11 Northeast Corner, Section 31
Post J. Mullett, D.S. 1849
Original Bearing Trees
Sugar 10" S60°E (M.B.) 8 Lks.
Sugar 8" N65°W (M.B.) 16 Lks.

D-11 North One-Quarter Corner, Section 32
Post J. Mullett, D.S. 1849
Original Bearing Trees
Hemlock 15" N12°W 17 Lks.
Hemlock 15" S82°E 26 Lks.

B. Description of corner evidence found and/or method applied in restoring or reestablishing corner:

C-11 No Evidence of Original Corner or Accessories Found.
City of Norway Land Record (Sh. 5) indicates Concrete Monument buried 1' in Road.
R. Perkins found and witnessed Corner in 1969-Found 1969 Witnesses.
Corner Researched in 1994.

D-11 No Evidence of Original Corner or Accessories Found.
1972 - R. Perkins found 1" Iron Pipe buried in Road and N-S Fences.
Witnessed and Recorded Corner in 1969
Corner Researched in 1994.

ACCEPTED BY THE DICKINSON COUNTY SURVEY PEER GROUP AS THE OFFICIAL CORNER UNDER MICHIGAN PUBLIC ACT 345 OF 1990 AT A MEETING HELD ON

11-20-95
ROP

COUNTY REPRESENTATIVE

C. Description of monument for corner and accessories established to perpetuate locating the position of the corner:

C-11 Found Concrete Monument buried 8" at above Location.
Set Monument Box over found Monument.
New Witnesses
Set 3" Stamped D.C.Recon. W.C.,
N24°E (M.B.) 33.30' W/Carsonite Stake
7" Cedar Post N67°E (M.B.) 61.86'
P. Pole #71-2462 S36°E (M.B.) 51.81'
X Cut on 1' Boulder S69°W (M.B.) 46.96'

D-11 Above Corner Lost due to Road Construction.
Set 2 1/2" Stamped D.C.Recon. Corner at above Location from 1972 B.T.'s.
New Witnesses
Maple 7" N53°W (M.B.) 116.84' (Old BT)
Maple 8" S33°E (M.B.) 69.73' (Old BT)
P.Pole (No #) N72°E (M.B.) 42.33'
X Cut on 2' Boulder S72°W (M.B.) 79.55'
Carsonite Stake S08°W (M.B.) 31.20'

Signed by Robert F. Perkins

Date Nov. 7, 1995

Surveyor's Michigan License No. 12027

FORM APPROVED BY MICHIGAN STATE BOARD OF PROFESSIONAL SURVEYORS, JAN. 28, 1977
REVISED JAN. 1983

