

MAR 03 1998

SECTION

LAND CORNER RECORDATION CERTIFICATE

Filing Requirement of Act 74, Mich. P.A. 1970

RECORDED

1997 DEC 10 PM 3:56

For corners in Dickinson (County)

Located In: Norway Twp.

Corner Code #

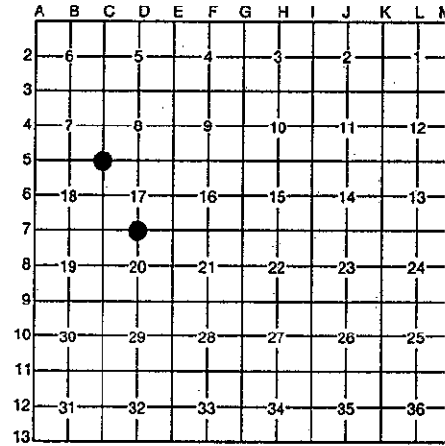
Table with 3 columns: Item, Located In, Corner Code #. Includes entries for Public Land Survey, Property Controlling in Section, and Miscellaneous Property in Section.

REGISTER OF DEEDS DICKINSON COUNTY RON MULLETT, CLERK

Register of Deeds Stamp & File Number

4. Lot No. Recorded Plat
5. Private Claims

I, Robert F. Perkins, in a field survey on Sept. 11, 1997, do hereby certify that under requirements of P.A. 74, Michigan P.A. of 1970, the corner points mentioned in lines 1 and 2 above were in conformance with regulations and rules therefore as required in the current manual of survey instructions of the United States Department of the Interior, Bureau of Land Management or by a decree of a Court of Law and/or that the corner points mentioned in lines 3, 4 and 5 above were in conformance with the rules of the Michigan Board of Professional Surveyors or by a Decree of a Court of Law; established, re-established, monumented, re-monumented, recovered, found as expressed below:



NOTE: Not more than 4 corners, all in the same town and range, may be recorded on this certificate.

A. Description of original monument and accessories and/or subsequent restoration:

D-7 1/4 Corner 17 Post by James Mullett, D.S. 1849 Original Bearing Trees Sugar 8" N03°E 22 Lks. Ironwood 8" S05°W 14 Lks.
C-5 Corner common to Sections 7-8-17-18 Post by James Mullett, D.S. 1849 Original Bearing Trees Cedar 12" N27°E 16 Lks. Cedar 8" N23°W 13 Lks.

ACCEPTED BY THE DICKINSON COUNTY SURVEY PEER GROUP AS THE OFFICIAL CORNER UNDER MICHIGAN PUBLIC ACT 345 OF 1990 AT A MEETING HELD ON 12-9-97 R.F.P.

B. Description of corner evidence found and/or method applied in restoring or reestablishing corner: COUNTY REPRESENTATIVE

D-7 No Evidence of Original Corner or Accessories found. Found 1 1/4" Iron Pipe projecting 16" out of Ground. Corner found and witnessed by Dickinson Co. Road Commission in 1912. Existing Iron Pipe agrees with 1912 Survey. Corner Location Researched in 1996.
C-5 No Evidence of Original Corner or Accessories Found. Found 1" Iron Pipe with 4" Brass Cap set by D.C. DeLaMater, RLS in 1951. 1951 Bearing Trees: Spruce 8" N45°W 37 Lks. Cedar 5" N48°E 59 Lks. (Old Report #47)

C. Description of monument for corner and accessories established to perpetuate locating the position of the corner:

D-7 Accepted above Iron Pipe as Best Available Evidence of Corner Location. Set. 2 1/2" Stamped D.C. Remon. Corner inside Existing Pipe. New Witnesses: Maple 3" N38°W (M.B.) 21.20' Maple 3" N36°E (M.B.) 29.02' Maple 12" S68°W (M.B.) 25.92' Nail/Tag Maple 6" S68°E (M.B.) 38.01' Nail/Tag Carsonite Marker North 1.5'
C-5 Found and Accepted above described Pipe Monument. New Witnesses: * Spruce 16" N45°W (M.B.) 25.25' * Cedar 12" N48°E (M.B.) 39.26' Maple 3" S51°E (M.B.) 30.60' Maple 4" S06°W (M.B.) 37.06' Carsonite Marker North 1.0' * Existing 1951 B.T.

Signed by [Signature]

Date Nov. 19, 1997

Surveyor's Michigan License No. 12027

FORM APPROVED BY MICHIGAN STATE BOARD OF PROFESSIONAL SURVEYORS, JAN 28, 1985 REVISED MAY 14, 1985

