

MAR 03 1998

RECORDED

1997 DEC 10 PM 3:57

SECTION

LAND CORNER RECORDATION CERTIFICATE

Filing Requirement of Act 74, Mich. P.A. 1970

For corners in

Dickinson

(County)

Located In:

Corner Code #

Norway Twp.

1. Public Land Survey	T	40N	R	29W	E-10
	T		R		F-9
	T		R		
	T		R		
2. Property Controlling in Section	S		T		R
	S		T		R
3. Miscellaneous Property in Section	S		T		R
	S		T		R

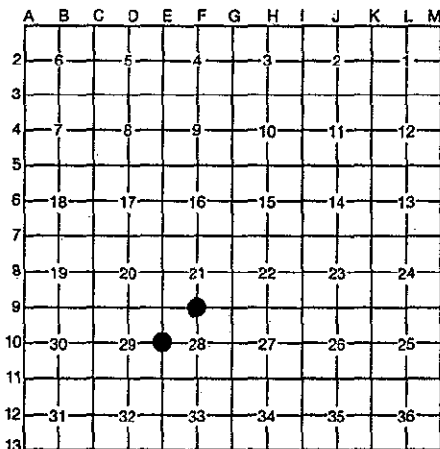
REGISTER OF DEEDS
DICKINSON COUNTY
RON MULLETT, COUNTY CLERK

Register of Deeds Stamp & File Number

4. Lot No. _____, Recorded Plat _____

5. Private Claims _____

I, Robert F. Perkins, in a field survey on Sept. 11, 1997, do hereby certify that under requirements of P.A. 74, Michigan P.A. of 1970, the corner points mentioned in lines 1 and 2 above were in conformance with regulations and rules therefore as required in the current manual of survey instructions of the United States Department of the Interior, Bureau of Land Management or by a decree of a Court of Law and/or that the corner points mentioned in lines 3, 4 and 5 above were in conformance with the rules of the Michigan Board of Professional Surveyors or by a Decree of a Court of Law; established, re-established, monumented, re-monumented, recovered, found as expressed below:



NOTE: Not more than 4 corners, all in the same town and range, may be recorded on this certificate.

A. Description of original monument and accessories and/or subsequent restoration:

E-10 1/4 Corner 29/28
Post by James Mullett, D.S. 1849
Original Bearing Trees
White Ash 12" S80°W 20 Lks.
Cedar 12" S47°E 10 Lks.

F-9 1/4 Corner 28
Post by James Mullett, D.S. 1849
Original Bearing Trees
Hemlock 12" S50°E 7 Lks.
Hemlock 6" N32°W 12 Lks.

ACCEPTED BY THE DICKINSON COUNTY
SURVEY PEER GROUP AS THE OFFICIAL
CORNER UNDER MICHIGAN PUBLIC ACT
345 OF 1990 AT A MEETING HELD ON
12-9-97
RFP

B. Description of corner evidence found and/or method applied in restoring or reestablishing corner: COUNTY REPRESENTATIVE

E-10 No Evidence of Original Corner or Accessories Found.
Found Iron Pipe at Fence Corner.
Old Fences run South, East & West.
(Fences are Down) Paint Line runs North and East.
Corner Location Researched in 1996.

F-9 No Evidence of Original Corner or Accessories Found.
Found 5/8" Iron Bar at old Cedar Post with old Fences running North, East and South. Location agrees with Dickinson County Road Commission Surveys of 1911 and 1932.
Corner Location Researched in 1996.

C. Description of monument for corner and accessories established to perpetuate locating the position of the corner:

E-10 Accepted above Described Pipe as Best Available Evidence of Corner Location.
New Witnesses:
Ash 6" N48°W (M.B.) 13.08' Nail/Tag
Ash 6" S15°E (M.B.) 7.60' Nail/Tag
Cedar 6" N24°W(M.B.) 61.35' Nail/Tag
Lynn 8"(in Clump) N42°E (M.B.) 20.60' Nail/Tag
Carsonite Marker North 1.5'

F-9 Accepted above Iron Bar as Best Remaining Evidence of Corner Location.
New Witnesses:
Cedar 7" N53°W(M.B.) 27.35' Nail/Tag
Cedar 10" N50°W(M.B.) 32.1' Existing BT
Maple 4" S53°E(M.B.) 23.54' Nail/Tag
Fir 8" N03°W(M.B.) 16.98' Nail/Tag
Cedar 12" S81°W(M.B.) 15.65' Nail/Tag
Carsonite Marker N.E. 1.5'

Signed by Robert F. Perkins

Date Nov. 19, 1997

Surveyor's Michigan License No. 12027

FORM APPROVED BY MICHIGAN STATE BOARD OF PROFESSIONAL SURVEYORS

