

**SURVEY &  
REMONUMENTATION**

DEC 18 1995

**COMMISSION**

**LAND CORNER RECORDATION CERTIFICATE**  
Filing Requirement of Act 74, Mich. P.A. 1970

RECORDED

NOV 21 4 11: 27

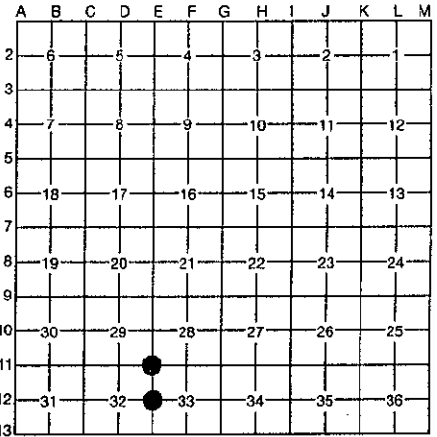
For corners in Dickinson Located In: \_\_\_\_\_ Corner Code # \_\_\_\_\_  
(County)

1. Public Land Survey	T <u>40N</u> R <u>29W</u>	<u>E-11</u>
	T _____ R _____	<u>E-12</u>
	T _____ R _____	_____
	T _____ R _____	_____
2. Property Controlling in Section	S _____ T _____ R _____	_____
	S _____ T _____ R _____	_____
3. Miscellaneous Property in Section	S _____ T _____ R _____	_____
	S _____ T _____ R _____	_____
4. Lot No. _____, Recorded Plat _____		
5. Private Claims _____		

REGISTER OF DEEDS  
STAMP & FILE NUMBER

I, Robert F. Perkins, in a field survey on Oct. 9, 1995, do hereby certify that under requirements of P.A. 74, Michigan P.A. of 1970, the corner points mentioned in lines 1 and 2 above were in conformance with regulations and rules therefore as required in the current manual of survey instructions of the United States Department of the Interior, Bureau of Land Management or by a decree of a Court of Law and/or that the corner points mentioned in lines 3, 4 and 5 above were in conformance with the rules of the Michigan Board of Professional Surveyors or by a Decree of a Court of Law; established, re-established, monumented, re-monumented, recovered, found as expressed below:

**NOTE: Not more than 4 corners, all in the same town and range, may be recorded on this certificate.**



**A. Description of original monument and accessories and/or subsequent restoration:**

- |  |  |
|--|--|
| E-11 Northeast Corner, Section 32<br>Post J. Mullett 1849<br>Original Bearing Trees<br>Maple 8" S45°E (M.B.) 13 Lks.<br>Aspen 12" N40°W (M.B.) 40 Lks. | E-12 East 1/2 Corner, Section 32<br>Post J. Mullett 1849<br>Original Bearing Trees<br>Cedar 15" N52°E (M.B.) 29 Lks.<br>Cedar 10" S52°W (M.B.) 34 Lks. |
|--|--|

**B. Description of corner evidence found and/or method applied in restoring or reestablishing corner:**

- |  |   |
|--|---|
| E-11 No Evidence of Original Corner or Accessories Found.<br>City of Norway Land Record indicates Concrete Monument buried 1" in Road E.<br>Corner Recorded in 1984<br>However, Bearing Trees are Erroneous.<br><br>Corner Researched in 1994. | E-12 No Evidence of Original Corner or Accessories Found.<br>Concrete Monument in Asphalt Road with 2 bearing Trees Recorded in 1984.<br>Corner Researched in 1994. |
|--|---|

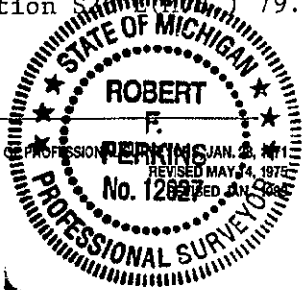
ACCEPTED BY THE DICKINSON COUNTY SURVEY PEER GROUP AS THE OFFICIAL CORNER UNDER MICHIGAN PUBLIC ACT 345 OF 1990 AT A MEETING HELD ON  
11-20-95  
ROP  
COUNTY REPRESENTATIVE

**C. Description of monument for corner and accessories established to perpetuate locating the position of the corner:**

- |  |  |
|--|--|
| E-11 Placed Monument Box over Existing Concrete Monument.<br>New Witnesses<br>Set 3" Stamped D.C. Remon. W.C.<br>Carsonite Marker N07°E (M.B.) 34.30'<br>Maple 5" S29°W (M.B.) 37.77'<br>Balsam 2" S30°E (M.B.) 38.05'<br>Power Pole (No #) N66°W (M.B.) 87.38'<br>Power Pole (No #) N77°E (M.B.) 79.34' | E-12 Placed Monument Box over Concrete Monument noted above.<br>New Witnesses<br>Set 3" Stamped D.C. Remon. W.C. and Carsonite Marker N55°W (M.B.) 27.80'<br>P. Pole S32°W (M.B.) 70.48'<br>N.W. Corner Foundation (Hse. #2698), S85°E (M.B.) 38.54'.<br>S.W. Corner Foundation (S2698) 79.40' |
|--|--|

Signed by Robert F. Perkins  
Surveyor's Michigan License No. 12027

Date Nov. 7, 1995



FORM APPROVED BY MICHIGAN STATE BOARD OF PROFESSIONAL SURVEYORS JAN. 2, 1971 REVISED MAY 24, 1975

184