

MAR 03 1998

RECORDED

SECTION

LAND CORNER RECORDATION CERTIFICATE

Filing Requirement of Act 74, Mich. P.A. 1970: 97 DEC 10 PM 3: 57

For corners in Dickinson (County)

Located In: Norway Twp.

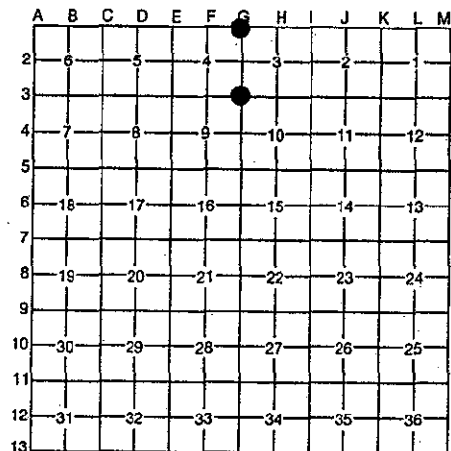
Corner Code #

Table with 3 columns: Description, Location (T/R, S/T), and Corner Code #. Includes entries for Public Land Survey, Property Controlling in Section, and Miscellaneous Property in Section.

REGISTER OF DEEDS DICKINSON COUNTY

Register of Deeds Stamp & File Number

4. Lot No. , Recorded Plat
5. Private Claims



I, Robert F. Perkins, in a field survey on Sept. 23, 19 97 do hereby certify that under requirements of P.A. 74, Michigan P.A. of 1970, the corner points mentioned in lines 1 and 2 above were in conformance with regulations and rules therefore as required in the current manual of survey instructions of the United States Department of the Interior, Bureau of Land Management or by a decree of a Court of Law and/or that the corner points mentioned in lines 3, 4 and 5 above were in conformance with the rules of the Michigan Board of Professional Surveyors or by a Decree of a Court of Law; established, re-established, monumented, re-monumented, recovered, found as expressed below:

NOTE: Not more than 4 corners, all in the same town and range, may be recorded on this certificate.

A. Description of original monument and accessories and/or subsequent restoration:

G-3 Corner common to Sections 3-4-9-10 Post by James Mullett, D.S., 1849 Original Bearing Trees Hemlock 8" S40°E 03 Lks. Hemlock 8" N88°W 07 Lks.

G-1 Northeast Corner, Section 4 Post by J.H. Mullett, 1848 Original Bearing Trees Fir 6" S16°E 8 Lks. Spruce 6" S57°W 16 Lks.

ACCEPTED BY THE DICKINSON COUNTY SURVEY PEER GROUP AS THE OFFICIAL CORNER UNDER MICHIGAN PUBLIC ACT 345 OF 1990 AT A MEETING HELD ON 12-9-97

B. Description of corner evidence found and/or method applied in restoring or reestablishing corner: COUNTY REPRESENTATIVE

G-3 No Evidence of Original Corner or Accessories Found. Found 1" Iron Pipe with 4" D.N.R. Brass Cap Set in 1955 by D.C. DeLaMater, R.L.S. 1955 Bearing Trees: Cedar 6" N85°W 8 Lks. Cedar 10" S12°E 34 Lks. (Old Report No. 48)

G-1 No Evidence of Original Corner or Accessories Found. Found 1" Iron Pipe with 4" D.N.R. Brass Cap set by D.C. DeLaMater, RLS in 1955. 1955 Bearing Trees: Spruce 6" S29°E 12 Lks. Spruce 8" S72°W 43 Lks. (Old Report No. 63)

C. Description of monument for corner and accessories established to perpetuate locating the position of the corner:

G-3 Found and Accepted above described Monument. New Witnesses: Maple 12" S85°E (M.B.) 8.07' Y. Birch 8" N34°W (M.B.) 20.78' Cedar 14" S12°E (M.B.) 23.00' Carsonite Marker East 1.0' Existing 1955 B.T.: Cedar 10" N85°W (M.B.) 5.15'

G-1 Found and Accepted above described Monument. New Witnesses: Cedar 8" N58°E (M.B.) 22.43' Cedar 3" N52°W (M.B.) 17.45' Cedar 5" S45°E (M.B.) 26.05' * Spruce 16" S71°W 28.60' Carsonite Marker North 1.0' * Existing 1955 B.T.

Signed by [Signature]

Date Nov. 19, 1997

Surveyor's Michigan License No. 12027

FORM APPROVED BY MICHIGAN STATE BOARD OF PROFESSIONAL SURVEYORS, JUL 28 1971

