

LAND CORNER RECORDATION CERTIFICATE
Filing Requirement of Act 74, Mich. P.A. 1970

For corners in
Dickinson
 (County)

Located In: Corner Code #

1. Public Land Survey	T <u>40</u> N R <u>29</u> W	<u>F2</u>
	T <u> </u> R <u> </u>	<u> </u>
	T <u> </u> R <u> </u>	<u> </u>
	T <u> </u> R <u> </u>	<u> </u>
2. Property Controlling in Section	S <u>4</u> T <u>40</u> N R <u>29</u> W	<u>12</u>
	S <u> </u> T <u> </u> R <u> </u>	<u> </u>
3. Miscellaneous Property in Sec.	S <u> </u> T <u> </u> R <u> </u>	<u> </u>
	S <u> </u> T <u> </u> R <u> </u>	<u> </u>

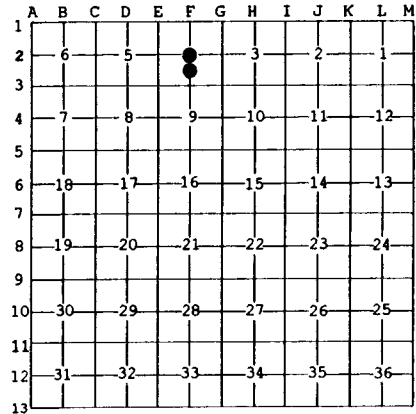
Register of Deeds Stamp & File Number

4. Lot No. _____, Recorded Plat _____
 5. Private Claims _____

Mar 13 2001

I, Stephan J. Szyszkoski, in a field survey on _____, 19____ do hereby state that under requirements of P.A. 74, Michigan P.A. of 1970, the corner points mentioned in lines 1 and 2 above were in conformance with regulations and rules therefore as required in the current manual of survey instructions of the United States Department of the Interior, Bureau of Land Management or by a decree of a Court of Law and /or that the corner points mentioned in lines 3, 4 and 5 above were in conformance with the rules of the Michigan Board of Land Surveyors or by a Decree of a Court of Law; established, re-established, monumented, recovered, found as expressed below.

NOTE: Not more than 2 corners, all in the same town and range, may be recorded on this certificate.



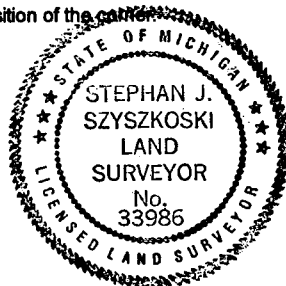
A. Description of original monument and accessories and/or subsequent restoration:
 (F2) Center of Section 4. Not established in the original survey.
 (12-Sec. 4) South 1/16 corner, Section 4. Not established in the original survey.

B. Description of corner evidence found and/or method applied in restoring or reestablishing corner:

(F2) Established the corner at the intersection of straight lines connecting opposite quarter corners.
 (12-Sec. 4) Established the corner midway and on a straight line between Center of Section 1324.36' North and Quarter corner 1324.36' South.

C. Description of monument for corner and accessories established to perpetuate locating the position of the corner:

(F2) Set 1" ID iron pipe with 4" aluminum MDNR cap. Blazed and scribed:	(12) Set 1" ID iron pipe with 4" aluminum MDNR cap. Blazed and scribed:
16" Hemlock N49E 15.0' "C1/4 BT"	6" W. Ash N39E 21.3' "1/16S BT"
10" Y. Birch S89E 19.3' do	5" Sugar S20E 72.7' do
7" Sugar S46W 4.6' do	12" Sugar S47W 51.9' do
11" Sugar N45W 12.4' do	6" Sugar N81W 30.0' do
Sqd Cedar post adjacent. Bearings are magnetic. Distances are to notch in lower blaze.	Sqd cedar post adjacent. Bearings are magnetic. Distances to notch in lower blaze.



Signed by Stephan J. Szyszkoski
 Surveyor's Michigan License No. 33986

Date 3/29/01

For the Michigan Department of Natural Resources - Forest Management Division