

LAND CORNER RECORDATION CERTIFICATE
 Filing Requirement of Act 74, Mich. P.A. 1970

RECORDED

1998 DEC 14 PM 12: 24

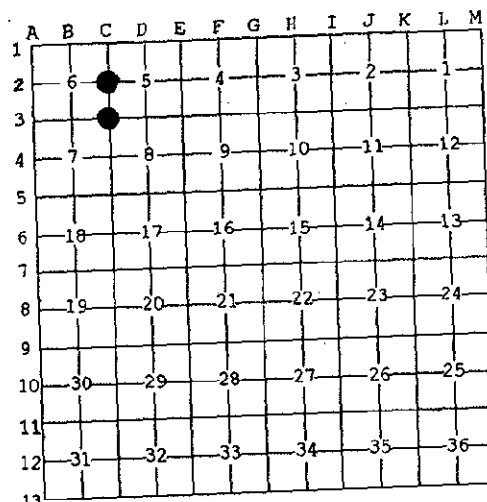
For corners in

<u>Dickinson</u> (County)	Located In:	Corner Code #
<u>Breitung Twp.</u>	<u>T40NR 30W</u>	<u>C-2</u>
1. Public Land Survey	T ___ R ___	<u>C-3</u>
	T ___ R ___	
	T ___ R ___	
2. Property Controlling in Section	S ___ T ___ R ___	
	S ___ T ___ R ___	
3. Miscellaneous Property in Sec.	S ___ T ___ R ___	
	S ___ T ___ R ___	

REGISTER OF DEEDS
 DICKINSON COUNTY
 RON MOHR, CLERK

Register of Deeds Stamp & File Number

SECTION



I, Robert F. Perkins, in a field survey on Aug. 18, 1998 do hereby state that under requirements of P.A. 74, Michigan P.A. of 1970, the corner points mentioned in lines 1 and 2 above were in conformance with regulations and rules therefore as required in the current manual of survey instructions of the United States Department of the Interior, Bureau of Land Management or by a decree of a Court of Law and/or that the corner points mentioned in lines 3, 4 and 5 above were in conformance with the rules of the Michigan Board of Land Surveyors or by a Decree of a Court of Law, established, re-established, monumented, recovered, found as expressed below:

NOTE: Not more than 2 corners, all in the same town and range, may be recorded on this certificate.

A. Description of original monument and accessories and/or subsequent restoration:

C-2 $\frac{1}{4}$ Corner Common to Sections 6/5
 Post by James H. Mullett, D.S. 1849
 Original Bearing Trees
 Aspen 2" S37°W(M.B.) 48 Lk.
 Aspen 2" N88°W(M.B.) 26 Lk.
 8-25-1978 E. Kazianka, RLS 14765 Set Iron
 Pipe as described in Certificate #191

C-3 Section Corner Common to 5-6-7-8
 Post by James H. Mullett, D.S. 1849
 Original Bearing Trees
 Aspen 6" S35°E 69 Lk.
 Aspen 6" S61°W 39 Lk.

B. Description of corner evidence found and/or method applied in restoring or reestablishing corner:

C-2 No Evidence of Original Corner or its Accessories Found.
 Found 1" Iron Pipe described in "A" with two 1978 Bearing Trees.

C-3 No Evidence of Original Corner or its Accessories Found.
 Found 5/8" x 16" Iron Bolt in Centerline Asphalt Road. Removed same and Found 1 1/4" Iron Pipe (Lying on its side) as noted on Old Corner Report #823 by J. Smallwood, RLS dated 4-16-1964.

C. Description of monument for corner and accessories established to perpetuate locating the position of the corner:

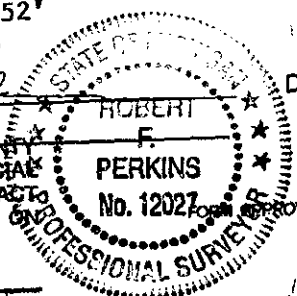
C-2 Replaced Found Iron Pipe with 2 1/2" Stamped D.C. Remon. Corner.
 New Witnesses
 W.Pine 8" N31°W(M.B.) 3.88' Nail/Tag
 W.Pine 7" N65°E(M.B.) 23.60' Nail/Tag
 Spruce 10" S50°E(M.B.) 41.00' Nail/Tag
 W.Pine 7" S4°W(M.B.) 13.20' Nail/Tag
 Placed Carsonite Marker 1.0' West
 Centerline E & LS RR East ±152'

C-3 Remonumented above with 2 1/2" Stamped D.C. Remon. Corner in Monument Box.
 New Witnesses
 P.Pole #74-0135 N63°W(M.B.) 50.19' Nail/Tag
 P.Pole #74-0136 S45°E(M.B.) 55.49' Nail/Tag
 Oak 3" S34°W(M.B.) 40.50' Nail/Tag
 Cherry 2" N48°E(M.B.) 45.91' Nail/Tag
 Placed Carsonite Marker 30.00' North

Signed by Robert F. Perkins

Date Oct. 24, 1998

Surveyor's Michigan License No. 12027
 ACCEPTED BY THE DICKINSON COUNTY SURVEY PEER GROUP AS THE OFFICIAL CORNER UNDER MICHIGAN PUBLIC ACT 345 OF 1990 AT A MEETING HELD ON



12-7-98
Robert F. Perkins
 COUNTY REPRESENTATIVE

APPROVED BY MICHIGAN STATE BOARD OF PROFESSIONAL SURVEYORS, JAN. 28, 1971
 REVISED MAY 14, 1975
 REVISED JAN., 1983
 REVISED OCT., 1985